

SURVEY & REMONUMENTATION

MAY 05 1997

LAND CORNER RECORDATION CERTIFICATE
Filing Requirement of Act 74, Mich. P.A. 1970

For corners in **COMMISSION**

_____ <u>Baraga</u> _____	Located In:	Corner Code #
(County)		
1. Public Land Survey	T <u>51N</u> R <u>33W</u>	<u>G-2</u>
	T _____ R _____	_____
	T _____ R _____	_____
	T _____ R _____	_____
2. Property Controlling in Section	S _____ T _____ R _____	_____
	S _____ T _____ R _____	_____
3. Miscellaneous Property in Sec.	S _____ T _____ R _____	_____
	S _____ T _____ R _____	_____

RECEIVED FOR RECORD THIS 20TH DAY OF DECEMBER, 1996 AT 10:30 A.M. AND RECORDED IN LIBER 4 OF LAND CORNER RECORDATION RECORDS ON PAGES 738-739.

Nelda McAntyre
BARAGA COUNTY REGISTER OF DEEDS

Register of Deeds Stamp & File Number

4. Lot No. _____, Recorded Plat _____
5. Private Claims _____

I, Michael Mileski, in a field survey on November, 19 96 do hereby state that under requirements of P.A. 74, Michigan P.A. of 1970, the corner points mentioned in lines 1 and 2 above were in conformance with regulations and rules therefore as required in the current manual of survey instructions of the United States Department of the Interior, Bureau of Land Management or by a decree of a Court of Law and /or that the corner points mentioned in lines 3, 4 and 5 above were in conformance with the rules of the Michigan Board of Land Surveyors or by a Decree of a Court of Law; established, re-established, monumented, recovered, found as expressed below:

NOTE: Not more than 2 corners, all in the same town and range, may be recorded on this certificate.

A. Description of original monument and accessories and/or subsequent restoration:

G-2; One-quarter Corner common to Sections 3 and 4, T51N, R33W;

See back of form.

B. Description of corner evidence found and/or method applied in restoring or reestablishing corner:

G-2; One-quarter Corner common to Sections 3 and 4, T51N, R33W;

Found a 2½" diameter aluminum pipe and a 3" aluminum cap flush with the ground as set by the BLM in 1984. The position of this monument was verified by a traverse. I did not remonument the corner but stamped "PA 345 1996" to the cap.

From this monument a 1" diameter drill steel as set by Larry O'Donnell, PS #28419 on 6 September 1983 bears S30°E a distance of 15.59'. According to a Land Recordation Certificate prepared by Mr. O'Donnell dated 21 February 1984 and recorded 20 March 1984 in Liber 4 on page 66 of Baraga County Land Corner Records, it was his intention that this corner be "restored by single proportionate measurement on line between the northwest corner and the southwest corner of section 3". However, the standard corner common to sections 33 and 34, T52N, R33W was used rather than the northwest corner of section 3.

C. Description of monument for corner and accessories established to perpetuate locating the position of the corner:

G-2; One-quarter Corner common to Sections 3 and 4, T51N, R33W;

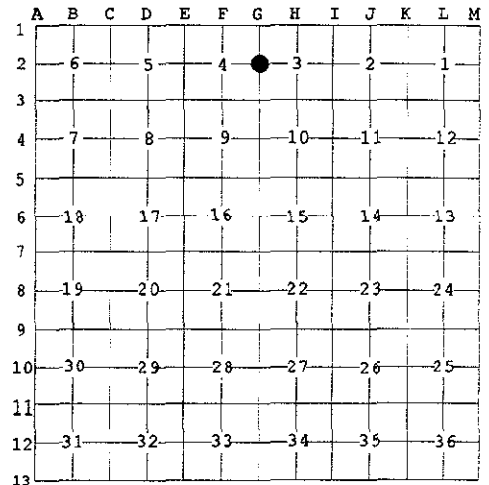
Found a 2½" aluminum pipe with a 3" aluminum cap stamped as to location and flush with the ground. Corner is located 30 feet west of the physical centerline of Shippy Road.

i)	Set 7" spike	S/side	Power Pole	N51°E	62.91'
ii)	Set 7" spike	S/side	Power Pole	S84°E	51.89'
iii)	Set 7" spike	SW/side	Power Pole	S31°E	8.90'
iv)	Set 7" spike	S/side	12" Red Maple	S62°W	98.93'
v)			SE cor RR sign	N70°W	19.31'
vi)	Set 7" spike	E/side	6" White Spruce	N06°W	99.16'
vii)			Location Post	North	1.0'

(i), (iii), and (iv) are marked with a vertical red paint stripe.
(ii) is a BLM accessory and is marked with a vertical red paint stripe.
(iv) and (vi) are marked with upper and lower blazes. The lower blaze is scribed "NBT". Both blazes as well as a band around the tree at the upper blaze are painted red.

Signed by Michael Mileski
Surveyor's Michigan License No. 39091

Date 18 Dec 1996
LIBER 4 PAGE 738



APPROVED LAND CORNER
P.A. 345 OF 1990
Baraga County

M
12-18-96



A. Description of original monument and accessories and/or subsequent restoration:

G-2; One-quarter Corner common to Sections 3 and 4, T51N, R33W;

Originally established during U.S. Survey conducted by Harvey Mellen, D.S. in 1845 and monumented with a yellow birch post witnessed by a

Fir	10	S19°W	9 lks.
Fir	8	N36°E	34 lks.

During the course of a survey conducted by Stephen Douglas of the Bureau of Land Management from 10 May 1984 to 10 November 1984 and approved 23 September 1985, this corner was considered lost and reestablished on line and at proportionate distance between the government corners immediately to the north and south. The BLM monumented this position with a 2½" x 30" aluminum pipe with cap and noted the following accessories:

Power Pole	S78°E	79 lks. (52.14')
Set a 7" spike directly below a found nail on the S/side.		
Measured	S84°E	51.89'

Aspen	6	S09°W	47½ lks. (31.35')
Gone			

SURVEY &
REMONUMENTATION

MAY 05 1997

COMMISSION