

MAY 25 1997

LAND CORNER RECORDATION CERTIFICATE  
Filing Requirement of Act 74, Mich. P.A. 1970

For corners in

<u>Baraga</u> (County)	Located In:	Corner Code #
1. Public Land Survey	T <u>51N</u> R <u>33W</u>	<u>G-5</u>
	T _____ R _____	_____
	T _____ R _____	_____
	T _____ R _____	_____
2. Property Controlling in Section	S _____ T _____ R _____	_____
	S _____ T _____ R _____	_____
3. Miscellaneous Property in Sec.	S _____ T _____ R _____	_____
	S _____ T _____ R _____	_____

RECEIVED FOR RECORD THIS 13TH DAY OF NOVEMBER, 1996 AT 10:30 A.M. AND RECORDED IN LIBER 4 OF LAND CORNER RECORDATION RECORDS ON PAGES 690-691.

*Theresa McIntyre*  
BARAGA COUNTY REGISTER OF DEEDS

Register of Deeds Stamp & File Number

4. Lot No. \_\_\_\_\_, Recorded Plat \_\_\_\_\_  
5. Private Claims \_\_\_\_\_

I, Michael Mileski, in a field survey on November, 19 96 do hereby state that under requirements of P.A. 74, Michigan P.A. of 1970, the corner points mentioned in lines 1 and 2 above were in conformance with regulations and rules therefore as required in the current manual of survey instructions of the United States Department of the Interior, Bureau of Land Management or by a decree of a Court of Law and /or that the corner points mentioned in lines 3, 4 and 5 above were in conformance with the rules of the Michigan Board of Land Surveyors or by a Decree of a Court of Law; established, re-established, monumented, recovered, found as expressed below:

NOTE: Not more than 2 corners, all in the same town and range, may be recorded on this certificate.

A. Description of original monument and accessories and/or subsequent restoration:

G-5; Section Corner common to Sections 9, 10, 15, and 16, T51N, R33W;

See back of form.

B. Description of corner evidence found and/or method applied in restoring or reestablishing corner:

G-5; Section Corner common to Sections 9, 10, 15, and 16, T51N, R33W;

Found the BLM monument in agreement with all four BLM new bearing trees. I did not remonument the corner but stamped the cap "PA 345 1996". Accepted as the best available evidence of the position of the original corner.

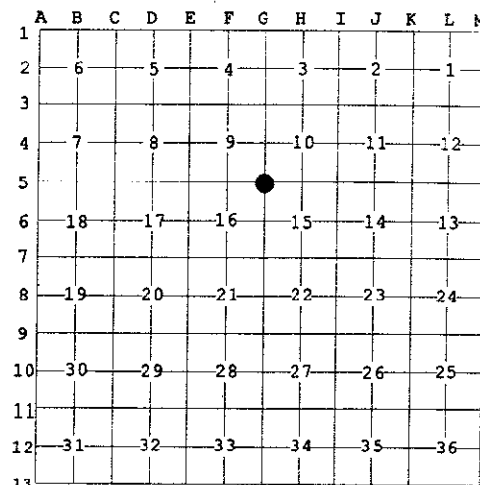
C. Description of monument for corner and accessories established to perpetuate locating the position of the corner:

G-5; Section Corner common to Sections 9, 10, 15, and 16, T51N, R33W;

Found a 5/8" diameter aluminum pipe with a 3 1/2" aluminum cap appropriately stamped as to location.

- i) Set 7" spike S/side 18" White Spruce N47°E 30.36'
- ii) Set 7" spike SW/side 11" White Birch S39°E 37.62'
- iii) Set 7" spike SE/side 13" White Birch S05°W 13.53'
- iv) Set 7" spike S/side 13" White Birch N66°W 1.65'
- Location Post North 1.0'

All of the above are BLM new bearing trees and are further described in Part A.



APPROVED LAND CORNER  
P.A. 345 OF 1990  
Baraga County

10-30-96

*[Signature]*



Signed by *Michael Mileski*

Date 5 Nov 1996

Surveyor's Michigan License No. 39091

A. Description of original monument and accessories and/or subsequent restoration:

G-5; Section Corner common to Sections 9, 10, 15, and 16, T51N, R33W;

Originally established during U.S. Survey conducted by Harvey Mellen, D.S. in 1845 and monumented with a hemlock post witnessed by a

Hemlock 24 S43°W 16 lks.

and a

Hemlock 30 N45°E 32 lks.

During the course of a survey conducted by Stephen Douglas of the Bureau of Land Management from 10 May 1984 to 10 November 1984 and approved 23 September 1985, this corner was found to be

"monumented with the fragmentary remains of a decayed hemlock post, located 6 ins. below the surface, at the bottom of a hole, 4½ ins. diam., which tapers to a well defined point, from which a decayed hemlock stump, 36 ins. diam., bears S.43°W., 16 lks. dist., with no visible mks., agreeing with the record position of an original hemlock bearing tree."

The BLM set a 5/8" x 48" aluminum pipe with cap and noted the following new bearing trees:

Spruce 18 N48°E 46 lks. (30.36')

Presently alive and 18" in diameter having a partially healed lower blaze with scribing visible. Set a 7" spike on the S/side.

Measured N47°E 30.36'

White Birch 10 S39°E 57 lks. (37.62')

Presently alive and 11" in diameter with scribing visible in bark. Set a 7" spike on the SW/side.

Measured S39°E 37.62'

White Birch 11 S08°W 20½ lks. (13.53')

Presently alive and 13" in diameter with scribing visible in bark. Set a 7" spike on the SE/side.

Measured S05°W 13.53'

White Birch 11 N63°W 2½ lks. (1.65')

Presently alive and 13" in diameter with scribing visible in bark. Set a 7" spike on the S/side.

Measured N66°W 1.65'

To each of the above BLM new bearing trees, I added an upper blaze. This blaze and a band around the tree at this blaze were painted red.

SURVEY &  
REMONUMENTATION

MAY 05 1997

COMMISSION