

**SURVEY & REMONUMENTATION**

**LAND CORNER RECORDATION CERTIFICATE**  
Filing Requirement of Act 74, Mich. P.A. 1970

For corners in MAY 05 1997

Baraga Located In: \_\_\_\_\_ Corner Code # \_\_\_\_\_  
(County)

1. Public Land Survey T 51N R 33W G-7 \_\_\_\_\_  
T \_\_\_\_\_ R \_\_\_\_\_  
T \_\_\_\_\_ R \_\_\_\_\_  
T \_\_\_\_\_ R \_\_\_\_\_

2. Property Controlling S \_\_\_\_\_ T \_\_\_\_\_ R \_\_\_\_\_  
in Section S \_\_\_\_\_ T \_\_\_\_\_ R \_\_\_\_\_

3. Miscellaneous S \_\_\_\_\_ T \_\_\_\_\_ R \_\_\_\_\_  
Property in Sec. S \_\_\_\_\_ T \_\_\_\_\_ R \_\_\_\_\_

RECEIVED FOR RECORD THIS 3RD DAY OF JANUARY, 1997 AT 10:30 A.M. AND RECORDED IN LIBER 4 OF LAND CORNER RECORDATION RECORDS ON PAGES 746-747.

*Relda McAntye*  
BARAGA COUNTY REGISTER OF DEEDS

Register of Deeds Stamp & File Number

4. Lot No. \_\_\_\_\_, Recorded Plat \_\_\_\_\_  
5. Private Claims \_\_\_\_\_

I, Michael Mileski, in a field survey on December, 19 96 do hereby state that under requirements of P.A. 74, Michigan P.A. of 1970, the corner points mentioned in lines 1 and 2 above were in conformance with regulations and rules therefore as required in the current manual of survey instructions of the United States Department of the Interior, Bureau of Land Management or by a decree of a Court of Law and /or that the corner points mentioned in lines 3, 4 and 5 above were in conformance with the rules of the Michigan Board of Land Surveyors or by a Decree of a Court of Law; established, re-established, monumented, recovered, found as expressed below:

NOTE: Not more than 2 corners, all in the same town and range, may be recorded on this certificate.

A. Description of original monument and accessories and/or subsequent restoration:

G-7; Section Corner common to Sections 15, 16, 21, and 22, T51N, R33W;

See back of form.

B. Description of corner evidence found and/or method applied in restoring or reestablishing corner:

G-7; Section Corner common to Sections 15, 16, 21, and 22, T51N, R33W;

Found a 2½" diameter aluminum pipe with a 3" aluminum cap as set by the BLM in 1984. From this monument a large white pine stump is located at record U.S. bearing and distance and a hemlock stump hole is located at record U.S. bearing and distance. Interestingly enough, this is not the only white pine and hemlock stump combination that agrees with the original record. This monument is located approximately 9½ feet west of an old fence running north and south. Also from this monument, a 1¼" diameter iron pipe, loosely set, and projecting 24 inches above ground is located approximately N18°E a distance of 39.1 feet. From this iron pipe there is no evidence of the original bearing trees. This iron pipe has been accepted in the past as representing the corner and may in fact be the section corner referenced to by several property descriptions in section 15. Accepted the BLM position as the best available evidence of the position of the original corner. I did not remonument the corner, but added "PA 345 1996" to the cap.

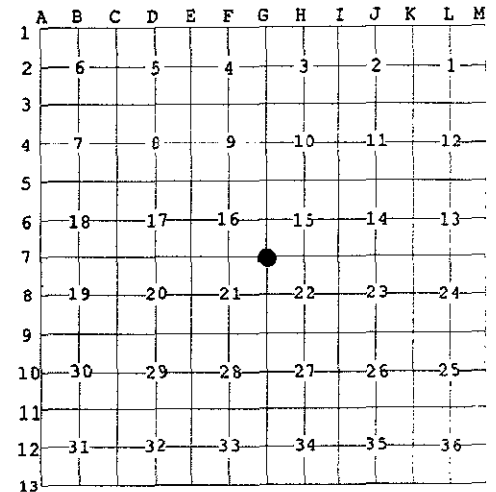
C. Description of monument for corner and accessories established to perpetuate locating the position of the corner:

G-7; Section Corner common to Sections 15, 16, 21, and 22, T51N, R33W;

Found a 2½" diameter aluminum pipe with a 3" aluminum cap stamped as to location and projecting 6 inches above the ground.

i)	Set 7" spike	E/side	9" White Birch	N18°E	70.65'
ii)	Set 7" spike	N/side	11" Red Maple	East	56.76'
iii)	Set 7" spike	SW/side	6" Red Maple	S42°E	12.61'
iv)	Set 7" spike	SE/side	6" Red Maple	S25°W	6.60'
v)	Set 7" spike	S/side	7" Red Maple	N52°W	11.22'
vi)			Location Post	North	1.0'

(i), (ii), (iv), and (v) are BLM new bearing trees and are further described in Part A. (iii) is marked with upper and lower blazes. The lower blaze is scribed "NBT". Both blazes as well as a band around the tree at the upper blaze are painted red.



APPROVED LAND CORNER  
P.A. 345 OF 1990  
Baraga County

12-18-96  
*[Signature]*



Signed by *Michael Mileski*  
Surveyor's Michigan License No. 39091

Date 5 Dec 1996  
LIBER 4 PAGE 746

A. Description of original monument and accessories and/or subsequent restoration:

G-7; Section Corner common to Sections 15, 16, 21, and 22, T51N, R33W;

Originally established during U.S. Survey conducted by Harvey Mellen, D.S. in 1845 and monumented with a yellow birch post witnessed by a

Hemlock 14 S65°W 25 lks.

White Pine 36 N45°E 56 lks.

During the course of a survey conducted by Stephen Douglas of the Bureau of Land Management from 10 May 1984 to 10 November 1984 and approved 23 September 1985, this corner was reestablished at record U.S. bearing and distance from the remains of a hemlock stump and a white pine stump. The BLM monumented this position with a 2½" x 30" aluminum pipe and cap witnessed by a:

White Birch 9 N21°E 108 lks. (71.28')

Presently alive and 9" in diameter with scribing visible in the bark. This tree had not been blazed, nor did I add blazes. Set a 7" spike on the E/side.

Measured N18°E 70.65'

Maple 10 S88°E 86 lks. (56.76')

Found an alive red maple 11" in diameter having a partially healed lower blaze with scribing visible. I added an upper blaze. Both blazes and a band around the tree at the upper blaze were painted red. Set a 7" spike on the N/side.

Measured East 56.76'

Maple 5 S30°W 10 lks. (6.60')

Found an alive red maple 6" in diameter having a partially healed lower blaze with scribing visible. I added an upper blaze. Both blazes and a band around the tree at the upper blaze were painted red. Set a 7" spike on the SE/side.

Measured S25°W 6.60'

Maple 7 N46°W 17 lks. (11.22')

Found an alive red maple 7" in diameter having a partially healed lower blaze with scribing visible. I added an upper blaze. Both blazes and a band around the tree at the upper blaze were painted red. Set a 7" spike on the S/side.

Measured N52°W 11.22'

SURVEY &  
REMONUMENTATION

MAY 05 1987

COMMISSION