

SURVEY & REMONUMENTATION

MAY 05 1997

LAND CORNER RECORDATION CERTIFICATE
Filing Requirement of Act 74, Mich. P.A. 1970

For corners in **COMMISSION**

<u>Baraga</u> (County)	Located In:	Corner Code #
1. Public Land Survey	T <u>51N</u> R <u>33W</u>	<u>G-11</u>
	T _____ R _____	_____
	T _____ R _____	_____
	T _____ R _____	_____
2. Property Controlling in Section	S _____ T _____ R _____	_____
	S _____ T _____ R _____	_____
3. Miscellaneous Property in Sec.	S _____ T _____ R _____	_____
	S _____ T _____ R _____	_____

RECEIVED FOR RECORD THIS 23RD DAY OF OCTOBER, 1996 AT 10:30 A.M. AND RECORDED IN LIBER 4 OF LAND CORNER RECORDATION RECORDS ON PAGES 662-663.

Nelda McIntyre
BARAGA COUNTY REGISTER OF DEEDS

Register of Deeds Stamp & File Number

4. Lot No. _____, Recorded Plat _____
5. Private Claims _____

I, Michael Mileski, in a field survey on October, 19 96 do hereby state that under requirements of P.A. 74, Michigan P.A. of 1970, the corner points mentioned in lines 1 and 2 above were in conformance with regulations and rules therefore as required in the current manual of survey instructions of the United States Department of the Interior, Bureau of Land Management or by a decree of a Court of Law and /or that the corner points mentioned in lines 3, 4 and 5 above were in conformance with the rules of the Michigan Board of Land Surveyors or by a Decree of a Court of Law; established, re-established, monumented, recovered, found as expressed below:

NOTE: Not more than 2 corners, all in the same town and range, may be recorded on this certificate.

A. Description of original monument and accessories and/or subsequent restoration:

G-11; Section Corner common to Sections 27, 28, 33, and 34, T51N, R33W;

See back of form.

B. Description of corner evidence found and/or method applied in restoring or reestablishing corner:

G-11; Section Corner common to Sections 27, 28, 33, and 34, T51N, R33W;

Found a 1 1/4" x 66" iron pipe as called for by the BLM in 1984 and by Mr. Crampton in 1988. The upper part of this iron pipe was bent, probably as a result of the house demolition, but 40 inches of the pipe was found to be straight into the ground. This corner is located 15.1 feet easterly of the southeasterly curb of Superior Avenue and 47.5 feet southerly of the southerly curb of State Highway M-38. Replaced the found iron pipe with a 1"(I.D.) x 36" galvanized iron pipe with a 2" aluminum cap. Accepted as the best available evidence of the position of the original corner.

C. Description of monument for corner and accessories established to perpetuate locating the position of the corner:

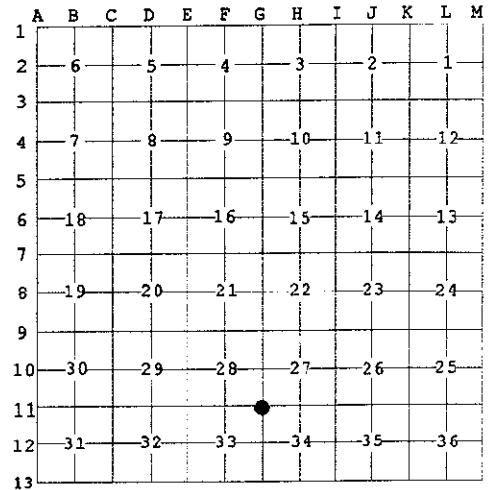
G-11; Section Corner common to Sections 27, 28, 33, and 34, T51N, R33W;

Set a 1"(I.D.) x 36" galvanized iron pipe with a 2" aluminum cap appropriately stamped as to location.

i) Set 7" spike	SE/side	Power Pole	N28°E	5.28'
ii) Set 7" spike	N/side	Power Pole	N77°E	143.24'
iii) Set 7" spike	W/side	Power Pole	S11°E	133.52'
iv) Set 7" spike	SE/side	Power Pole	S51°W	170.72'
v) Set 7" spike	S/side	Power Pole	N78°W	70.79'
vi) Set 7" spike	SW/side	Power Pole	N34°W	120.95'
		Location Post	East	2.0'

(i) and (v) are Crampton accessories and are further described in Part A.

All of the above accessories are marked with a red vertical paint line approximately 10 inches in length at approximately shoulder height.



APPROVED LAND CORNER
P.A. 345 OF 1990
Baraga County

10-09-96
[Signature]



Signed by *[Signature]*

Surveyor's Michigan License No. 39091

Date 22 Oct 1996
LIBER 4 PAGE 662

A. Description of original monument and accessories and/or subsequent restoration:

G-11; Section Corner common to Sections 27, 28, 33, and 34, T51N, R33W;

Originally established during U.S. Survey conducted by Harvey Mellen, D.S. in 1845 and monumented with a hemlock post witnessed by a

Yellow Birch 18 N22°W 33 lks.

and a

Cedar 12 N33°E 16 lks.

During the course of a survey conducted by Stephen Douglas of the Bureau of Land Management from 10 May 1984 to 10 November 1984 and approved 23 September 1985, this corner was found to be "monumented by persons unknown, with an iron pipe 1 in. diam., firmly set, projecting 16 ins. above the ground... this position is harmoniously related to existing orig. cors., has long been recognized by local surveyors and adjacent land owners, and is accepted as the best available evidence of the orig. cor. position." The BLM did not remonument the corner but did note the following accessories:

NW Cor. House N82°W 0.5 lk.
This house has been demolished.

Power Pole N19°E 172½ lks. (113.85')

Power Pole N75°W 107½ lks. (70.95')

According to a Land Corner Recordation Certificate filed by Robert Crampton, P.S. #28419 and recorded 22 January 1988 in Liber 4 page 168, Mr. Crampton states "found 1¼" iron pipe next to a house stairwell, which agrees with the original Plat of the Village of Baraga. Verified by talks with Keith Sackett DNR surveyor and Edward Charles, L.L.S.". Mr. Crampton noted the following accessories:

Utility Pole N28°E 4.88'
Found a small nail and metal tag RLS 24591 facing the corner.
Measured N28°E 4.90'
I set a 7" spike on the SE/side. Measured 5.28'

Spruce 6 N74°E 30.30' Gone.

Utility Pole N77°W 70.62'
Found a small nail and metal tag RLS 24591 facing the corner.
Measured N78°W 70.25'
I set a 7" spike on the S/side. Measured 70.79'

NW Cor. House Stairwell N50°W 0.50' Gone.

SURVEY &
REMONUMENTATION

MAY 05 1997

COMMISSION