

LAND CORNER RECORDATION CERTIFICATE

FILING REQUIREMENT OF ACT 74, MICH. P.A.1970

FOR CORNERS OF--	LOCATED IN--	CORNER CODE NUMBER
1. PUBLIC LAND SURVEY _____	T. <u>51</u> N. 57 R. <u>34</u> EX W.	<u>G11</u>
2. PROPERTY CONTROLLING IN SECTION _____	T. _____ N. _____ E. _____ S. _____ R. _____ W. _____	_____
3. MISCELLANEOUS PROPERTY IN SECTION _____	T. _____ N. _____ E. _____ S. _____ R. _____ W. _____	_____
4. LOT NO. _____, RECORDED PLAT _____		
5. PRIVATE CLAIMS _____		

REGISTER OF DEEDS STAMP AND FILING NUMBER

I, Arthur O. Enger do hereby certify that under requirements of P.A. 74, Michigan P.A. of 1970, the corner points mentioned in lines 1 and 2 above (identified with circles on index code diagram—over) were, in a field survey on April 1 1974, established, re-established, monumented, re-monumented, recovered or restored as expressed below and in conformance with regulations and rules therefore as required in the current manual of survey instructions of the United States Department of the Interior, Bureau of Land Management or by a decree of a court of law. Furthermore, that the corner points mentioned in lines 3, 4 and 5 above were, in a field survey on _____ 19____, found, recovered, restored, established or re-established as expressed below and in conformance with the rules of the Michigan State Board of Registration for Land Surveyors or, by a Decree of a Court of law:

A. Description of original monument and accessories and/or subsequent restoration:

Original post not found. Found an original BT, a Y. Birch 16 N35W 9 lks., alive and in good condition, from which an unknown party had placed a 1/2" O.D. x 24" iron pipe to mark the corner position.

B. Description of corner evidence found and/or method applied in restoring or re-establishing corner:

Corner re-monumented as described below from the original bearing tree as found.

C. Description of monument for corner and accessories established to perpetuate locating the position of the corner:

1" I.D. x 36" iron pipe with 3 1/2" aluminum cap.
 Cedar 9 N65°W (mag.) 15.0 ft. "S28, NBT"
 Cedar 6 S78°E (mag.) 25.8 ft. "S34, NBT"
 W.Pine 15 S13°E (mag.) 7.0 ft. "S34, NBT"

SIGNED BY _____ DATE _____

SURVEYOR'S MICHIGAN REGISTRATION NO. _____ (SEAL)

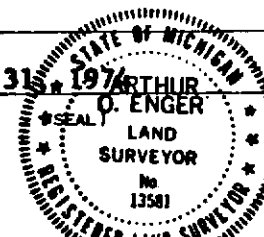
FOR STATE AND UNITED STATES AGENCIES:

SIGNED BY _____ DATE _____

APPROVED AND SIGNED BY Arthur O. Enger DATE July 31, 1974

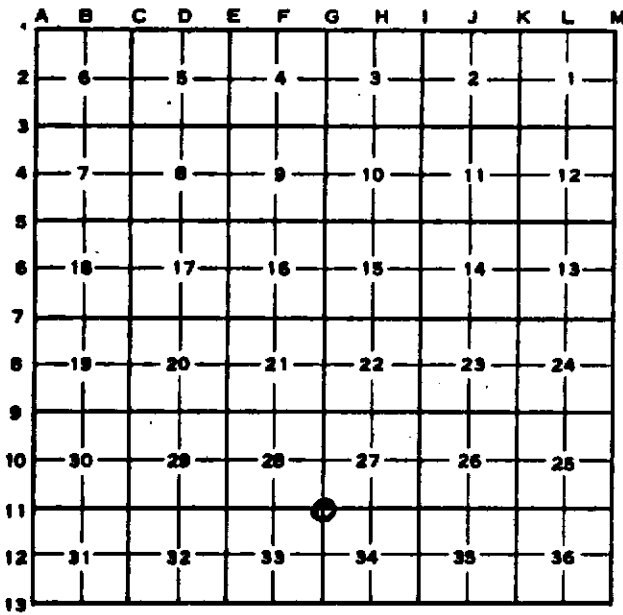
Arthur O. Enger
Michigan Department of Natural Resources

SURVEYOR'S MICHIGAN REGISTRATION NO. 13581



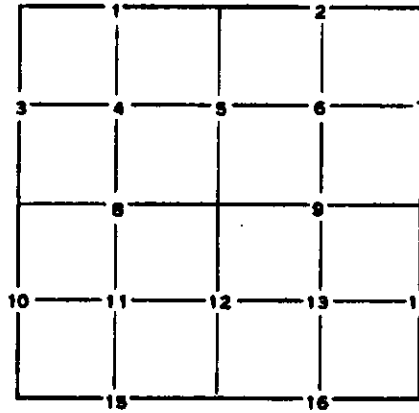
CORNER NUMBERING CODE DIAGRAMS FOR IDENTIFYING LAND CORNER RECORDATIONS AND INDEXING

**FOR PUBLIC LAND SURVEY CORNERS IN THE
T. 51N, R. 34W (MENTIONED OVER)**



Apply letter prefix for corner points encircled above for identifying corner recordation numbers over.

FOR PROPERTY CONTROLLING AND MISC. PROPERTY CORNERS WITHIN THE SECTION (MENTIONED OVER AND EXCLUDE LOT CORNER)



1. Above coded numbers are positioned on 1/16 fractional lines of the section.
2. Township corner code numbers shall be applied to corners of above typical section not numbered.
3. Miscellaneous property corners within a section, located at points other than numbered above, shall be referenced to at least two of above corner code numbers.
4. Private claim corners to be tied to rectangular land corners if possible - sketch required below.

EXPLANATORY SKETCH IF NECESSARY -- BELOW

Blank area for an explanatory sketch, containing some faint, illegible text from the reverse side of the page.