

LAND CORNER RECORDATION CERTIFICATE
Filing Requirement of Act 74, Mich. P.A. 1970

For corners in

Baraga

(County)

Located In:

Corner Code #

1. Public Land Survey	T <u>51</u> N R <u>34</u> W	<u>84</u>
	T <u> </u> R <u> </u>	<u> </u>
	T <u> </u> R <u> </u>	<u> </u>
	T <u> </u> R <u> </u>	<u> </u>
2. Property Controlling in Section	S <u>7</u> T <u>51</u> N R <u>34</u> W	<u>12</u>
	S <u> </u> T <u> </u> R <u> </u>	<u> </u>
3. Miscellaneous Property in Sec.	S <u> </u> T <u> </u> R <u> </u>	<u> </u>
	S <u> </u> T <u> </u> R <u> </u>	<u> </u>

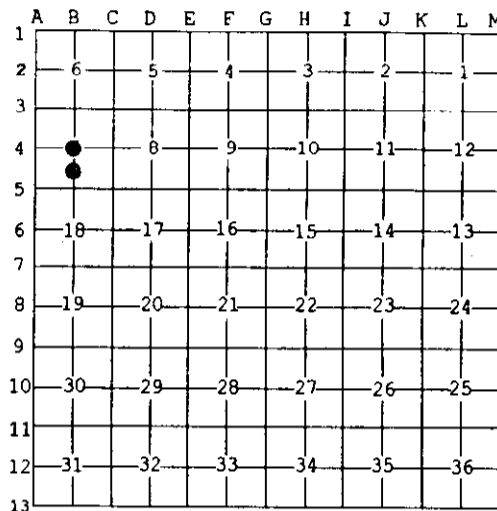
Register of Deeds Stamp & File Number

4. Lot No. _____, Recorded Plat _____
 5. Private Claims _____

Apr 28 2003

I, Stephan J. Szyszkoski, in a field survey on _____, 20__ do hereby state that under requirements of P.A. 74, Michigan P.A. of 1970, the corner points mentioned in lines 1 and 2 above were in conformance with regulations and rules therefore as required in the current manual of survey instructions of the United States Department of the Interior, Bureau of Land Management or by a decree of a Court of Law and /or that the corner points mentioned in lines 3, 4 and 5 above were in conformance with the rules of the Michigan Board of Land Surveyors or by a Decree of a Court of Law, established, re-established, monumented, recovered, found as expressed below:

NOTE: Not more than 2 corners, all in the same town and range, may be recorded on this certificate.



A. Description of original monument and accessories and/or subsequent restoration:
 (84) Center of Section 7. Established in 1980 by K.L.Sackett, RLS 19006, at the intersection of straight lines connecting opposite 1/4 corners. The position was not monumented in the 1980 survey but was used to control further subdivision of Section 7.
 (12-Sec. 7) South 1/16 corner, Section 7. Established in 1980 by K.L.Sackett RLS 19006 midway and on a straight line between Center of Section and Quarter corner common to Sections 7 & 18. Set 1" IDx30" iron pipe. DNR nail and tag in: 4" Cedar S27E 13.60', 3" Cedar S27W 22.19', 5" Cedar N71W 23.50'.

B. Description of corner evidence found and/or method applied in restoring or reestablishing corner:
 (84) Accepted the 1980 position for the corner and placed a 1"IDx32" iron pipe capped with a 4" dia. cast aluminum MDNR tablet, appropriately stamped, at the intersection of straight lines connecting monumented 1/4 corners of record 2647.86' north, 2598.56' east, 2663.77' south, and 2717.43' west.
 (12-Sec. 7) The 1980 monument was not recovered. It has either been destroyed by quarry excavation or is deeply buried under loose rock. The 1980 accessories are dead but standing. Remonumented the corner midway and on a straight line between Quarter corner 1331.88' south and Center of Section 1331.88' north. This position is about 0.5' distant from the position reconstructed from the remains of the 1980 corner.

C. Description of monument for corner and accessories established to perpetuate locating the position of the corner:

(84) Set 1"IDx32" I.pipe with 4" alum. MDNR cap. Blazed, scribed, and set measuring nails in: 20" W.Pine N66E 20.6' "C1/4 BT" 9" Cedar S22W 15.8' do 8" Cedar S85W 32.0' do 7" Spruce N20W 39.4' do Set squared cedar post adjacent. Bearings are magnetic. Distances are to nail with plastic tag #33986	(12) Set 1"IDx32" I.pipe with 4" alum. MDNR cap. Blazed, scribed, and set measuring nails in: 8" Maple N71E 51.4' "1/16S BT" 6" Maple S78E 23.0' do 6" Maple S38E 29.1' do 12" W.Pine S07E 56.1' do Set squared cedar post adjacent. Bearings are magnetic. Distances are to nail with plastic tag #33986.
---	--



Signed by Stephan J. Szyszkoski
 Surveyor's Michigan License No. 33986

Date 5/20/03