

MAR 30 2000

SECTION

LAND CORNER RECORDATION CERTIFICATE  
Filing Requirement of Act 74, Mich. P.A. 1970

For corners in

<u>Baraga</u> (County)	Located In:	Corner Code #
1. Public Land Survey	T <u>52N</u> R <u>33W</u>	<u>C-5</u>
	T _____ R _____	_____
	T _____ R _____	_____
2. Property Controlling in Section	S _____ T _____ R _____	_____
	S _____ T _____ R _____	_____
3. Miscellaneous Property in Sec.	S _____ T _____ R _____	_____
	S _____ T _____ R _____	_____

RECEIVED FOR RECORD THIS 25th DAY  
FEBRUARY A.D. 2000 AT 10:30 A.M.  
AND RECORDED IN LIBER 5 OF LAND  
CORNER RECORDATION RECORDS ON  
PAGE 99 and 100.

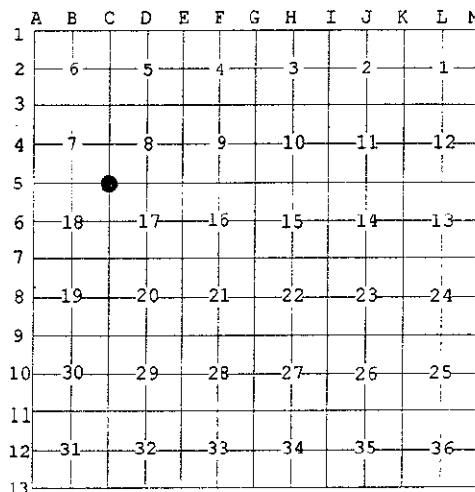
*Handwritten Signature*

BARAGA COUNTY REGISTER OF DEEDS  
Register of Deeds Stamp & File Number

4. Lot No. \_\_\_\_\_, Recorded Plat \_\_\_\_\_

5. Private Claims \_\_\_\_\_

I, Michael Mileski, in a field survey on July, 19 99 do hereby state that under requirements of P.A. 74, Michigan P.A. of 1970, the corner points mentioned in lines 1 and 2 above were in conformance with regulations and rules therefore as required in the current manual of survey instructions of the United States Department of the Interior, Bureau of Land Management or by a decree of a Court of Law and /or that the corner points mentioned in lines 3, 4 and 5 above were in conformance with the rules of the Michigan Board of Land Surveyors or by a Decree of a Court of Law; established, re-established, monumented, recovered, found as expressed below:



NOTE: Not more than 2 corners, all in the same town and range, may be recorded on this certificate.

A. Description of original monument and accessories and/or subsequent restoration:

C-5; Section Corner common to Sections 7, 8, 17 and 18, T52N, R33W;

See back of form.

B. Description of corner evidence found and/or method applied in restoring or reestablishing corner:

C-5; Section Corner common to Sections 7, 8, 17 and 18, T52N, R33W;

Found MDNR monument as described in Part A two feet east of the physical centerline of a north-south 20-foot wide graded gravel road and 4 inches below the road surface. There are old fences to the east and west. This corner was not remonumented. Accepted as the best available evidence of the position of the original corner.

C. Description of monument for corner and accessories established to perpetuate locating the position of the corner:

C-5; Section Corner common to Sections 7, 8, 17 and 18, T52N, R33W;

Found a 1" (I.D.) iron pipe with 4" aluminum cap as set by the Michigan Department of Natural Resources in 1973.

Set 7" spike	SE/side	8" Cedar	N56°E	18.88'
Set 7" spike	NE/side	9" Cedar	S56°E	24.58'
Set 7" spike	SE/side	12" Cedar	S30°W	64.72'
Set 7" spike	SW/side	8" Red Maple	N25°W	43.22'
		6' Steel fence post w/ yellow sign	East	17.0'

All of the above new bearing trees were marked with upper and lower blazes. The lower blaze was scribed "NBT". Both blazes and a band around the tree at the upper blaze were painted red.

APPROVED LAND CORNER  
P.A. 345 OF 1990  
Baraga County

12-16-99  
2/16



Signed by [Signature]  
Surveyor's Michigan License No. 39091

Date 27 Dec 1999

MAR 30 2000

SECTION

A. Description of original monument and accessories and/or subsequent restoration:

C-5; Section Corner common to Sections 7, 8, 17 and 18, T52N, R33W;

Originally established during U.S. Survey conducted by William Burt, D.S. in 1849 and monumented with a cedar post witnessed by a

Black Ash      6      N64°W      12 lks.

and a

Black Ash      8      S08°E      23 lks.

In 1905, P.A. Larsen "set cedar post in place of original cedar". Mr. Larsen does not comment on the existence and condition of the U.S. bearing trees. He did note the following two new bearing trees:

Birch            7      S45°W      14½ lks.

and a

Black Ash      7      N60°E      22½ lks.

On 29 May 1973, Arthur Enger, PS #13581 and Keith Sackett, PS #19006 of the Michigan Department of Natural Resources reestablished this corner "in center of N & S county road and in line with old fences to E and to W. Distance W to Corner A5 is calculated by traverse to be 5408.3 ft., the original record distance being 5400.8 ft.". This position was monumented with a 1" (I.D.) x 36" iron pipe with 4" aluminum cap. The following accessories were noted:

Cedar            4      N47°E (mag.)      22.5'  
 Recovered as an 8" diameter cedar stump with lower blaze and scribing visible.  
 Measured                    N53°E      22.3' to chaining notch.

Cedar            4      S61°E (mag.)      25.1'  
 Not positively identified.

Balsam          6      S38°W (mag.)      32.5'  
 This accessory destroyed.

Refer to Land Corner Recordation Certificate filed by Mr. Enger and recorded on 1 August 1974 in Liber 1, pages 123-124, Baraga County Land Corner Records.