

LAND CORNER RECORDATION CERTIFICATE
Filing Requirement of Act 74, Mich. P.A. 1970

For corners in

Baraga
 (County)

Located In:

Corner Code #

1. Public Land Survey	T 53N R 30W	MC N. of C10
	T 53N R 30W	C11
	T R	
	T R	
2. Property Controlling in Section	S T R	
	S T R	
3. Miscellaneous Property in Sec.	S T R	
	S T R	

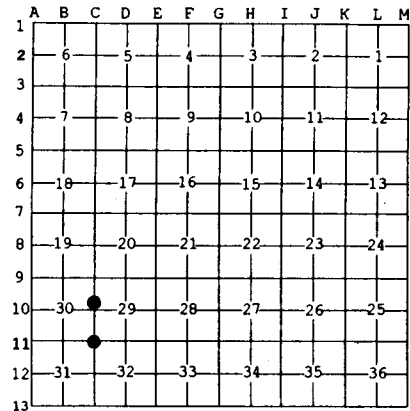
Register of Deeds Stamp & File Number

4. Lot No. _____, Recorded Plat _____
 5. Private Claims _____

C11 Nov 26 2001
 MC Nov 20 2001

I, Stephan J. Szyszkoski, in a field survey on _____, 20__ do hereby state that under requirements of P.A. 74, Michigan P.A. of 1970, the corner points mentioned in lines 1 and 2 above were in conformance with regulations and rules therefore as required in the current manual of survey instructions of the United States Department of the Interior, Bureau of Land Management or by a decree of a Court of Law and/or that the corner points mentioned in lines 3, 4 and 5 above were in conformance with the rules of the Michigan Board of Land Surveyors or by a Decree of a Court of Law; established, re-established, monumented, recovered, found as expressed below:

NOTE: Not more than 2 corners, all in the same town and range, may be recorded on this certificate.



A. Description of original monument and accessories and/or subsequent restoration:
 (MC N. of C10) Witness corner to the record position of the original meander corner between Sections 29 & 30. The original Meander corner (16.05 chains north of C10) and its accessories were not recovered.
 (C11) Corner common to Sections 29-30-31-32. Established in 1846 by Wm. Ives: East between Sections 30 & 31...67.45 W.Pine 24...80.00 Set post corner of Secs. 29-30-31-32 on brink of bank of former coast of Huron Bay about 10 feet high CNNE and SSW. Fir 11 S47W 32, Fir 8 N71E 42.

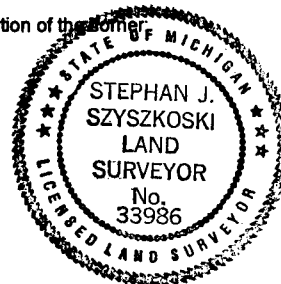
B. Description of corner evidence found and/or method applied in restoring or reestablishing corner:

(MC N. of C10) Established this Witness corner on the Section line between Sections 29 & 30 15.1515 chains (1000.00 feet) north of C10, being 59.3' south of the record position. For the Section line, I produced the line between C11 and C10.
 (C11) The original post and accessories were not recovered. Recovered the remains of the W.Pine line tree noted above, a 34" dia. 3.5' tall rotting W.Pine stump, with no remaining marks. This is the only W.Pine in the immediate area. From the LT, I measure 67.4529 chains west to the original section corner. I reestablished the Section corner C11 at record distance of 12.55 chains (828.3') east of the LT and on a line produced through the Section corner A11 and the tree. The corner falls on the brink of the bank, in accord with the record.

C. Description of monument for corner and accessories established to perpetuate locating the position of the corner

(MC) Set 1"IDx32" I.pipe with 4" alum. MDNR cap in a 3'dia. mound of stone.
 Blazed and scribed:
 12" Maple S76E 21.0' "MC BT"
 5" W.Spruce S02W 3.5' do
 10" Hemlock S40W 29.8' do
 9" Cedar N54W 28.8' do
 Placed a squared cedar post adjacent.
 Bearings are magnetic. Distances are to notch in lower blaze.

(C11) Set 1"IDx32" I.pipe with 4" alum. MDNR cap. Blazed and scribed:
 5" Sugar N62E 15.7' "S29 NBT"
 7" Sugar S45E 19.3' "S32 NBT"
 7" Sugar S30W 6.5' "S31 NBT"
 7" Sugar N63W 2.4' "S30 NBT"
 Set a squared sugar post adjacent.
 Bearings are magnetic. Distances are to notch in lower blaze.



Signed by Stephan J. Szyszkoski
 Surveyor's Michigan License No. 33986

Date 3/19/02