

LAND CORNER RECORDATION CERTIFICATE
Filing Requirement of Act 74, Mich. P.A. 1970

For corners in

Baraga	Located In:	Corner Code #
(County)		
1. Public Land Survey	T ___ R ___	_____
	T ___ R ___	_____
	T ___ R ___	_____
	T ___ R ___	_____
2. Property Controlling in Section	S 30 T 53H R 30W	14
	S 30 T 53H R 30W	13
3. Miscellaneous Property in Sec.	S ___ T ___ R ___	_____
	S ___ T ___ R ___	_____

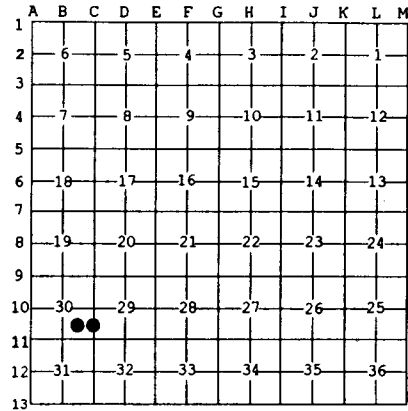
Register of Deeds Stamp & File Number

4. Lot No. _____, Recorded Plat _____
 5. Private Claims _____

Nov 26 2001

I, Stephan J. Szyszkoski, in a field survey on _____, 20__ do hereby state that under requirements of P.A. 74, Michigan P.A. of 1970, the corner points mentioned in lines 1 and 2 above were in conformance with regulations and rules therefore as required in the current manual of survey instructions of the United States Department of the Interior, Bureau of Land Management or by a decree of a Court of Law and/or that the corner points mentioned in lines 3, 4 and 5 above were in conformance with the rules of the Michigan Board of Land Surveyors or by a Decree of a Court of Law; established, re-established, monumented, recovered, found as expressed below:

NOTE: Not more than 2 corners, all in the same town and range, may be recorded on this certificate.



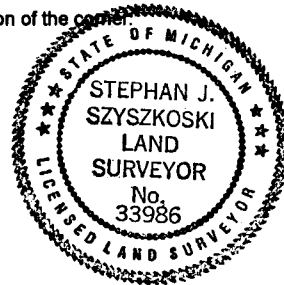
- A. Description of original monument and accessories and/or subsequent restoration:**
 (14-Sec. 30) South 1/16 corner between Sections 29 and 30. Not established in the original survey.
 (13-Sec. 30) Southeast 1/16 corner, Section 30. Not established in the original survey.

B. Description of corner evidence found and/or method applied in restoring or reestablishing corner.

- (14-Sec. 30) Established the corner midway and on a line of mean true bearing between Quarter corner 1318.09' north and Section corner 1318.09' south.
 (13-Sec. 30) Established the corner at the intersection of 1/16 lines as follows: South 1/16 line Section 30 parallel with the south line of Section 30, East 1/16 line Section 30 an average of the bearings of the N-S 1/4 line and the east line of Section 30.

C. Description of monument for corner and accessories established to perpetuate locating the position of the corner.

- | | |
|--|--|
| (14) Set 1"IDx32" I.pipe with 4" alum. MDNR cap. Blazed and scribed: | (13) Set 1"x32" I.pipe with 4" alum. MDNR cap. Blazed and scribed: |
| 9" Sugar S46E 8.5' "1/16S BT" | 10" Maple N01W 5.3' "1/16S BT" |
| 10" Sugar S48W 21.5' do | 16" Hemlock S88E 32.0' do |
| 8" Sugar N51W 3.4' do | 8" Maple S01W 45.4' do |
| 6" Sugar N05E 12.1' do | 9" Sugar N84W 12.1' do |
| Set squared cedar post adjacent. | Set squared cedar post adjacent. |
| Bearings are magnetic. Distances are to notch in lower blaze. | Bearings are magnetic. Distances are to notch in lower blaze. |



Signed by Stephan J. Szyszkoski
 Surveyor's Michigan License No. 33986

Date 3/19/02