

LAND CORNER RECORDATION CERTIFICATE
Filing Requirement of Act 74, Mich. P.A. 1970

For corners in

<u>Baraga</u>	Located In:	Corner Code #	
<small>(County)</small>			
1. Public Land Survey	T <u>53N</u> R <u>30W</u>	<u>B11</u>	_____
	T _____ R _____	_____	_____
	T _____ R _____	_____	_____
	T _____ R _____	_____	_____
2. Property Controlling in Section	S <u>31</u> T <u>53N</u> R <u>30W</u>	<u>2</u>	_____
	S _____ T _____ R _____	_____	_____
3. Miscellaneous Property in Sec.	S _____ T _____ R _____	_____	_____
	S _____ T _____ R _____	_____	_____

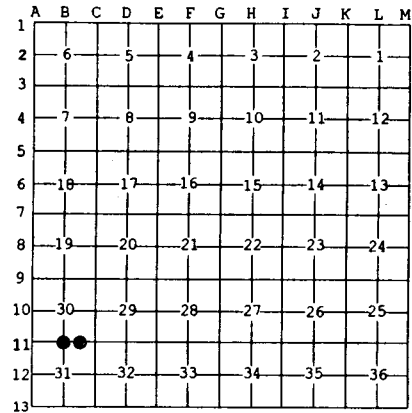
Register of Deeds Stamp & File Number

4. Lot No. _____, Recorded Plat _____
 5. Private Claims _____

Nov 26 2001

I, Stephan J. Szyszkoski, in a field survey on _____, 20____ do hereby state that under requirements of P.A. 74, Michigan P.A. of 1970, the corner points mentioned in lines 1 and 2 above were in conformance with regulations and rules therefore as required in the current manual of survey instructions of the United States Department of the Interior, Bureau of Land Management or by a decree of a Court of Law and /or that the corner points mentioned in lines 3, 4 and 5 above were in conformance with the rules of the Michigan Board of Land Surveyors or by a Decree of a Court of Law, established, re-established, monumented, recovered, found as expressed below:

NOTE: Not more than 2 corners, all in the same town and range, may be recorded on this certificate.



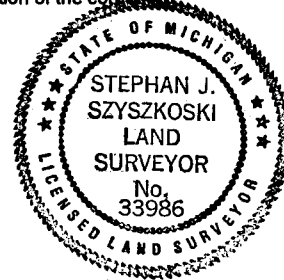
A. Description of original monument and accessories and/or subsequent restoration:
 (B11) Quarter corner common to Sections 30-31. Established in 1846 by Wm. Ives: East between Section 30 & 31...40.00 Set qr. Section post Y.Birch 30 S37W 10, Sugar 10 N48E 30...67.45 W.Pine 24....80.00 Set post corner of Secs 29-30-31-32.
 (2-Sec. 31) East 1/16 corner between Sections 30-31. Not established in the original survey.

B. Description of corner evidence found and/or method applied in restoring or reestablishing corner:

(B11) The original post and accessories were not recovered. Recovered the remains of the line tree W.Pine 24, now a 34" dia. 3.5' tall rotting stump with no markings visible, 67.4529 chains east of the original section corner A11. Reestablished the Quarter corner B11 by single proportionate measurement to the original record between the Section corner and the line tree.
 (2-Sec. 31) Established the corner midway and on a line of mean true bearing between Quarter corner 1320.04' west and Section corner 1320.04 east.

C. Description of monument for corner and accessories established to perpetuate locating the position of the corner:

(B11) Set 1"IDx32" I.pipe with 4" alum. MDNR cap. Blazed and scribed:	(2).Set 1"IDx32" I.pipe with 4" alum. MDNR cap. Blazed and scribed:
10" Sugar N46E 12.8' "1/4S NBT"	10" Cedar N82E 9.8' "1/16S BT"
5" Sugar N83E 26.5' do	12" Hemlock S22E 24.9' do
10" Sugar S24W 17.4' do	14" Cedar S11W 35.3' do
6" Sugar N60W 40.6' do	5" Sugar N77W 5.3' do
Set squared cedar post adjacent.	Set two squared cedar posts adjacent.
Bearings are magnetic. Distances are to notch in lower blaze.	Bearings are magnetic. Distances are to notch in lower blaze.



Signed by Stephan J. Szyszkoski Date 3/19/02
 Surveyor's Michigan License No. 33986