

AUG 22 1995

BARRY COUNTY REMONUMENTATION

STATE OF MICHIGAN COUNTY OF BARRY RECEIVED FOR RECORD

JAN 25 8 35 AM '95

COMMISSION

LAND CORNER RECORDATION CERTIFICATE Filing Requirement of Act 74, Mich. P.A. 1970

Sandy Schondelmaier REGISTER OF DEEDS

For corners in

BARRY (County)

Located In:

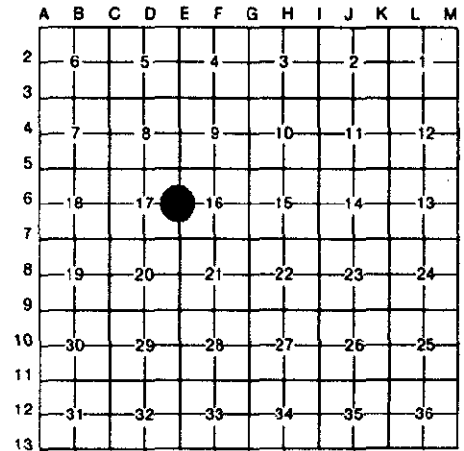
Corner Code #

Table with 3 columns: Description, T, R, and Corner Code #. Includes entries for Public Land Survey, Property Controlling, and Miscellaneous Property in Sec.

002277

Register of Deeds Stamp & File Number

- 4. Lot No. Recorded Plat
5. Private Claims



I, BRIAN REYNOLDS, in a field survey on 12 SEPTEMBER, 19 1994, do hereby certify that under requirements of P.A. 74, Michigan P.A. of 1970, the corner points mentioned in lines 1 and 2 above were in conformance with regulations and rules therefore as required in the current manual of survey instructions of the United States Department of the Interior, Bureau of Land Management or by a decree of a Court of Law and/or that the corner points mentioned in lines 3, 4 and 5 above were in conformance with the rules of the Michigan Board of Land Surveyors or by a Decree of a Court of Law; established, re-established, monumented, re-monumented, recovered, found as expressed below:

NOTE: Not more than 4 corners, all in the same town and range, may be recorded on this certificate.

A. Description of original monument and accessories and/or subsequent restoration:

- 1 GENERAL LAND OFFICE: MUSGROVE EVANS, D.S. 1826, (R7W,P.31) W.O. 16 S74E 25 LKS Do. 16 S68 1/2W 26 LKS
2 COUNTY SURVEYOR RECORDS: WALTER HEATH, MAY 14 AND 15, 1903, (L.3, P.84) STONE AND CROCKERY BLK. CHERRY 18 N1/4E 1.00 1/2 MAPLE 14 N79 3/4W 3.28
3 COUNTY ROAD COMMISSION: SEPT. 15, 1972, SET IRON BY PROPORTIONAL AND ON STRAIGHT LINE WITH EXISTING CENTER AND E 1/4 POST
4 SURVEY BY JAMES L. KING, P.S. #14766, 25 SEPTEMBER, 1972, (ACT 132 SURVEY,L.1,P.83) SET 1/2" IRON ROD 16" OAK S40W 26.80' 16" CHERRY S45E 23.80'
5 LAND CORNER RECORDATION CERTIFICATE: #50, BY JAMES L. KING, P.S. #14766, DATED 29 DECEMBER, 1972, " SET 1/2" IRON BY PROPORTIONAL METHODS AND ON STRAIGHT LINE WITH EXISTING CENTER AND E 1/4 POST," (NO WITNESSES INDICATED ON LCRC)

B. Description of corner evidence found and/or method applied in restoring or reestablishing corner:

FOUND IRON AND WITNESSES SHOWN ON SURVEY BY KING (L.1,P.83) , LCRC #50 BY KING INDICATES LINE PROJECTED FROM G-6 THROUGH F-6. NOTES BY HEATH, 1903, INDICATE HEATH FOUND E-6, F-6 AND G-6, FOUND F-6 TO BE 2 LINKS SOUTH OF LINE FROM E-6 TO G-6. TIED INTO F-6 AND G-6, PROJECTED LINE WEST DISTANCE BY HEATH, OFFSET 4 LINKS NORTH , DUG AND FOUND 60d SPIKE 3" BELOW GRADE, EXCAVATED FURTHER TO FIND PLOW POINT SURROUNDED BY BRICK AT 3+ ' BELOW GRADE. PLOW POINT HAD LUMBER CRAYON MARKS ON POINT, INDICATING RECENT USE BY A MODERN ERA SURVEYOR. FOUND PLOW POINT DIFFERS FROM POSITION OF KING'S IRON BY 3.78 FEET. ACCEPTED PLOW POINT AS PERPETUATION OF CORNER BY HEATH. DISREGARDED IRON SET BY KING.

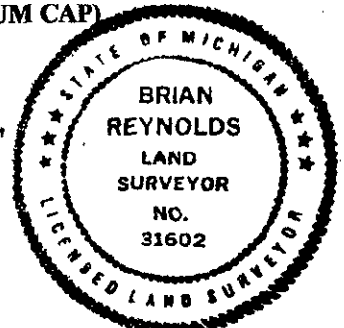
RAISED PLOW POINT WITH STANDARD BARRY COUNTY REMONUMENTATION MONUMENT.

ACT 345 BARRY COUNTY REMONUMENTATION APPROVED BY PEER REVIEW AT A MEETING HELD ON

C. Description of monument for corner and accessories established to perpetuate location and position of the corner:

- SET STANDARD BARRY COUNTY REMONUMENTATION MONUMENT (3/4"X36"W/ALUMINUM CAP)
SET 40d NAIL W/REMON TAG IN THE NORTHWEST SIDE OF A 28" OAK S42W 30.33'
SET 40d NAIL W/REMON TAG IN THE NORTHWEST SIDE OF A 12" OAK S30E 23.11'
SET 40d NAIL W/REMON TAG IN THE NORTHEAST SIDE OF A 30" OAK S63E 49.74'
SET 40d NAIL W/REMON TAG IN THE SOUTH SIDE OF A 26" BLACK WALNUT N60E 47.11'
CORNER IS IN LINE WITH A TREE LINE RUNNING SOUTH 3'+/- SOUTH OF CENTERLINE GRAVEL ROAD (KEYES ROAD)
IRON SET BY KING (SURVEY L. 1, P. 83; LCRC #50) S20°W 3.78'

NOV 94 BRIAN REYNOLDS COUNTY SURVEYOR



Signed by [Signature] Surveyor's Michigan License No. 31602

Date JANUARY 24, 1995