

SURVEY & REMONUMENTATION

JUL 24 1997

COMMISSION

BARRY COUNTY REMONUMENTATION

LAND CORNER RECORDATION CERTIFICATE
Filing Requirement of Act 74, Mich. P.A. 1970

STATE OF MICHIGAN
COUNTY OF BARRY
RECORDED

MAR 5 9 26 AM '97

Sandy ...
REGISTER OF DEEDS

For corners in BARRY (County)

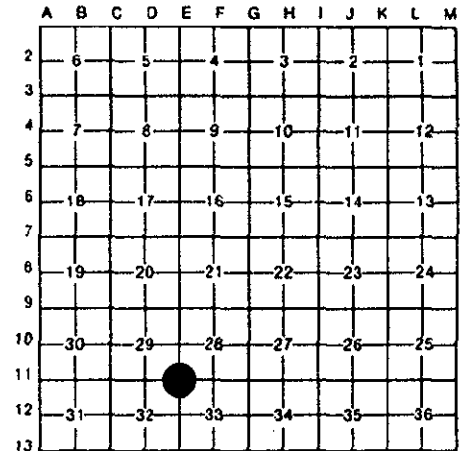
Located In: Corner Code #

Table with 3 columns: Description (Public Land Survey, Property Controlling, Miscellaneous), Location (T, R, S), and Corner Code (E-11).

002487

Register of Deeds Stamp & File Number

4. Lot No. ... Recorded Plat ...
5. Private Claims ...



BRIAN REYNOLDS 27 JUNE 96
I, in a field survey on 19

do hereby certify that under requirements of P.A. 74, Michigan P.A. of 1970, the corner points mentioned in lines 1 and 2 above were in conformance with regulations and rules therefore as required in the current manual of survey instructions of the United States Department of the Interior, Bureau of Land Management or by a decree of a Court of Law and/or that the corner points mentioned in lines 3, 4 and 5 above were in conformance with the rules of the Michigan Board of Land Surveyors or by a Decree of a Court of Law; established, re-established, monumented, re-monumented, recovered, found as expressed below:

NOTE: Not more than 4 corners, all in the same town and range, may be recorded on this certificate.

A. Description of original monument and accessories and/or subsequent restoration:

- 1. GENERAL LAND OFFICE: SYLVESTER SIBLEY, D.S., 1826 (R10W,P.26) A W. OAK 32 N26E 82 A HICKORY 8 N46W 1.03.
2. COUNTY SURVEY RECORDS: JOHN CRESSY, OCT.-NOV. 1884 (L.2,P.265 RESURVEY) "FOUND OLD POST & 1 BEARING, PUT IN TILE & TOOK NEW" W. OAK 12 N20 1/2W 38 B. Do. 14 S65E 24.
3. CONSUMERS POWER COMPANY: D.H.W., 9-18-64 (F.B. 976 PG. 106), "FOUND TILE, SET "T" IRON" 36" W. OAK N14 1/2"E 42.14' 15" HICKORY N79"E 32.13' 36" OAK S33 1/2"E 56.83".
4. COUNTY ROAD COMMISSION: 4-16-71, "IRON" 18" HICKORY N87"E 32.13' 36" OAK N10"E 42.14' 36" OAK S33"E 56.83".
5. LAND CORNER RECORDATION CERTIFICATE: NO. 1, BY DENNIS A. MIDDLETON, P.S. #16049, MAY 4, 1971, "N.W. COR. FD. BY WIT. FD. TILE AND "T" IRON" (SIC) WITNESSES SAME AS IN #3 ABOVE.
6. ACT 132 SURVEY: BY DENNIS A. MIDDLETON, P.S. #16049, 4-22-1971 (L.1, PP.1-2), WITNESSES SAME AS IN #3 AND #6 ABOVE.
7. UNRECORDED SURVEY: BY ROBERT E. SNELL, P.S. #9734, MARCH 2, 1982, RECITE SAME WITNESSES AS IN #6 ABOVE.
8. UNRECORDED SURVEY: BY RAY MOORED, P.S. #26463, 9-30-94 "N.E. COR. GONE, RESET 1/2" IRON W/CAP FROM OLD WITNESSES".
NO OTHER RECORDED HISTORICAL INFORMATION AVAILABLE FOR THIS CORNER

B. Description of corner evidence found and/or method applied in restoring or reestablishing corner:

FOUND 1/2" CAPPED IRON BY RAY MOORED, P.S. #26463, FROM WITNESSES, OAK N10"E OAK S33"E, AND STUMP OF HICKORY N87"E. FOUND IRON LIES IN AN AREA THAT HAS BEEN DOZED AND FILLED WITH EARTH AND LARGE SLABS OF BROKEN CONCRETE. EXCAVATED UNDER FOUND IRON TO A DEPTH OF 3+ FEET, DID NOT FIND TILE. DISTANCES TO FOUND TILES AT E-10 & F-11 FIT REMARKABLY WELL WITH DISTANCES RECITED IN SURVEYS BY CRESSY (#2 OF PART "A") AND MIDDLETON (#6 OF PART "A").

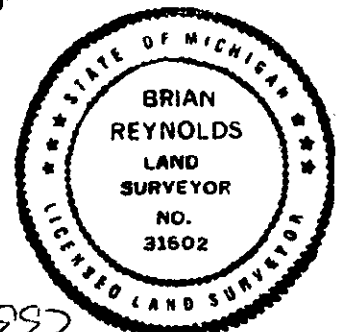
ACCEPTED FOUND 1/2" IRON AS PERPETUATION OF CORNER POSITION BY CRESSEY & MIDDLETON.

REPLACED FOUND 1/2" IRON WITH STANDARD BARRY COUNTY REMONUMENTATION MONUMENT.
ACT 345 BARRY COUNTY REMONUMENTATION
APPROVED BY PEER REVIEW AT A MEETING HELD

7-8-96 BRIAN REYNOLDS COUNTY SURVEYOR

C. Description of monument for corner and accessories established to perpetuate locating the position of the corner:

- SET STANDARD BARRY COUNTY REMONUMENTATION MONUMENT (WITH ALUMINUM CAP)
SET 20d NAIL W/REMON TAG IN THE WEST SIDE OF A 38" OAK N14"E 41.56'
SET 20d NAIL W/REMON TAG IN THE TOP CENTER OF A WOODEN FENCE POST N4"W 42.50'
SET 20d NAIL W/REMON TAG IN THE WEST SIDE OF A 36" OAK S33"E 57.04'
FOUND 1/2" IRON (NO CAP) N89"E 33.00' FOUND 1/2" IRON (NO CAP) N52"E 41.74'
ROUGHLY IN LINE WITH CENTERLINE OF ROAD EXTENDED NORTH
ROUGHLY IN LINE WITH CENTERLINE OF ROAD EXTENDED EAST
CENTERLINE OF NORTH-SOUTH GRAVEL DRIVEWAY LIES EAST 20'+/-



Signed by [Signature] Date FEB 18, 1997
Surveyor's Michigan License No. 31602