

1993

STATE OF MICHIGAN
COUNTY OF BARRY
RECEIVED FOR RECORD

COMMISSION

BARRY COUNTY REMONUMENTATION
LAND CORNER RECORDATION CERTIFICATE
Filing Requirement of Act 74, Mich. P.A. 1970

JUL 20 11 21 AM '93

Sandy Schondelmayer
REGISTER OF DEEDS

For corners in

BARRY
(County)

Located In:

Corner Code #:

- 1. Public Land Survey 2N 7W A-2
T _____ R _____ MAPLE GROVE TOWNSHIP
T _____ R _____ (W1/4 COR. SEC. 6)
T _____ R _____
- 2. Property Controlling S _____ T _____ R _____
in Section S _____ T _____ R _____
- 3. Miscellaneous S _____ T _____ R _____
Property in Sec. S _____ T _____ R _____

002030

Register of Deeds Stamp & File Number

- 4. Lot No. _____, Recorded Plat _____
- 5. Private Claims _____

	A	B	C	D	E	F	G	H	I	J	K	L	M
2	6	5	4	3	2	1							
3													
4	7	8	9	10	11	12							
5													
6	16	17	16	15	14	13							
7													
8	19	20	21	22	23	24							
9													
10	30	29	28	27	26	25							
11													
12	31	32	33	34	35	36							
13													

BRIAN REYNOLDS

MAY

93

I, BRIAN REYNOLDS, in a field survey on MAY, 1993, do hereby certify that under requirements of P.A. 74, Michigan P.A. of 1970, the corner points mentioned in lines 1 and 2 above were in conformance with regulations and rules therefore as required in the current manual of survey instructions of the United States Department of the Interior, Bureau of Land Management or by a decree of a Court of Law and/or that the corner points mentioned in lines 3, 4 and 5 above were in conformance with the rules of the Michigan Board of Land Surveyors or by a Decree of a Court of Law; established, re-established, monumented, re-monumented, recovered, found as expressed below:

NOTE: Not more than 4 corners, all in the same town and range, may be recorded on this certificate.

A. Description of original monument and accessories and/or subsequent restoration:

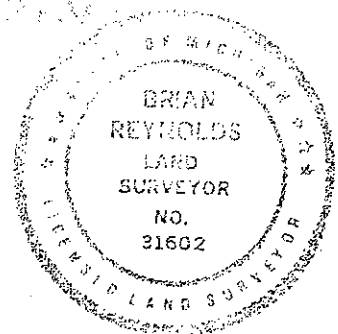
G.L.O.:
Beech 7, S75W, 25
B. Ash 10, N6W, 74
Pratt (1889)
Balt. cor. 20 links S.
White Oak 6, N55 1/2E, 87 1/2.

A. C. Willson (L. 1, Pg. 282)(April 12, 187
N. from SW. corner 40.04ch. Set Stake, S
& earthenware:
Planted S35 1/4E, 88; Do. N24 1/2E, 1.17.

Heath 1904: (L3, Pg. 98-99)
Set Clay Tile on Resurvey.
White Oak 10, N72 1/4E, 77 3/4

B. Description of corner evidence found and/or method applied in restoring or reestablishing corner:

REYNOLDS (JUL 92)
FOUND CLAY TILE; SET 1/2" REROD IN CENTER:
40 D NAIL - N. FACE - 6" BLACK WALNUT - E. - 16.20'
40 D NAIL - ORANGE CAP - 18" BLACK WALNUT - S60W - 30.20'
" " " - 14" " - S30W - 52.00'
CENTER TOP - TELE. RISER - S45E - 30.29'
BALTIMORE CORNER - 13.12' - S.



C. Description of monument for corner and accessories established to perpetuate locating the position of the corner:

REPLACED 1/2" IRON WITH 3/4" IRON PIN, ALUM. REMON. CAP, AND PUNCH HOLE:
REYNOLDS' (JUL 92) WITNESSES FOUND AND CHECKED;
WITNESSES MISSING: 18" BLACK WALNUT - S60W; 14" BLACK WALNUT - S30W;
REWITNESSED: 40D NAIL - BARRY Co. SHINER - 18" BLACK WALNUT - S60W - 30.20'
" " " - 14" " - S30W - 52.00

NEW WITNESSES:
40 D NAIL - BARRY Co. SHINER - SE. FACE - 10" BLACK WALNUT - N45E - 28.82'
" " " - SW. FACE - 8" BLACK WALNUT - S40E - 36.82'
+/- 8' N. OF FENCE ROW TO WEST
ON APPROX. CL. GRAVEL ROAD

Signed by [Signature]

Date 7-19-93

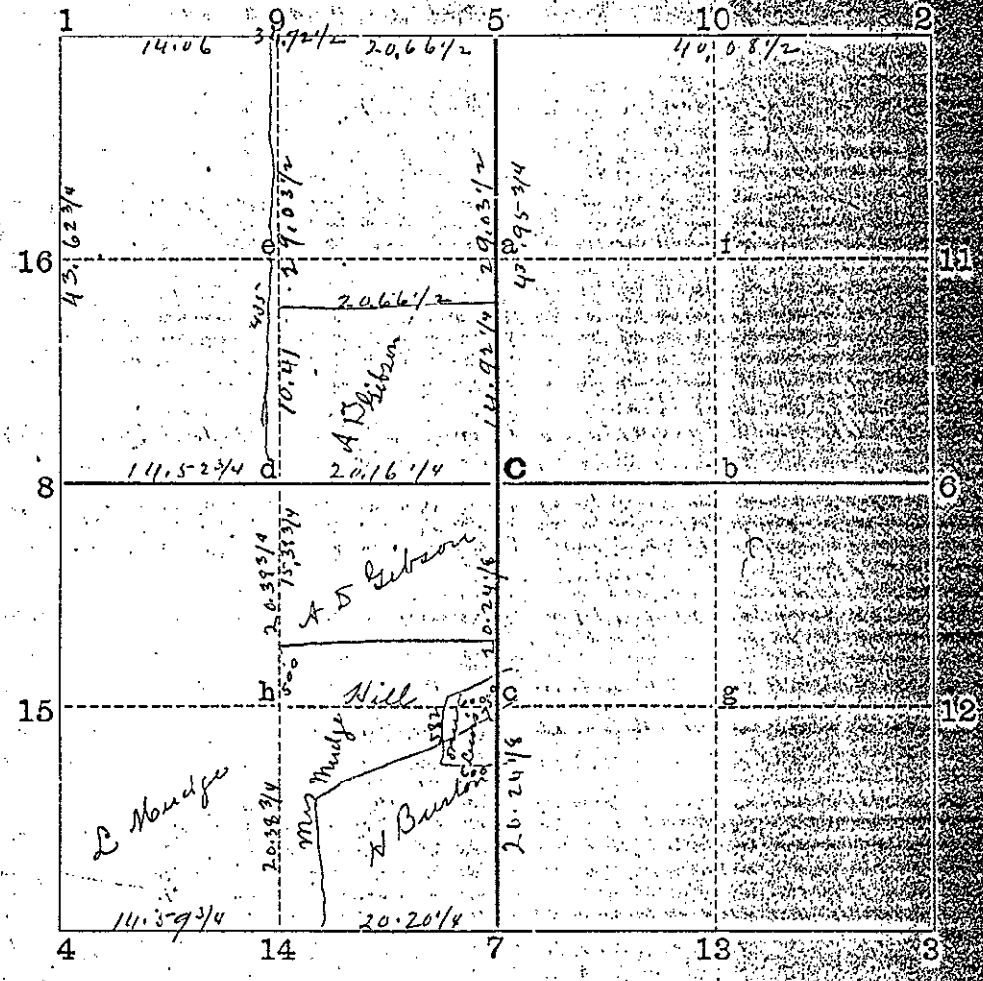
Surveyor's Michigan License No. 31602

STATE OF MICHIGAN, }
COUNTY OF BARRY, } ss.

Received for Record this 5th day of October A.D. 1904 at 11:10 o'clock
A. Grant Shook Register of Deeds

COPY OF MINUTES OF SURVEY.

SECTION 6., Town 2 North, Range 7 West, Meridian of Michigan.



- 1. Three 3 inch tile, Brick w/ E corner } Black Walnut 12 S 63 3/4 W 77 1/2
Butternut 16 S 19 1/2 W 108
- 2. Stake: Maple S. S. 31 3/4 E. 5 1/4; Elm 12 S 76 E. 33 3/4
- 3. Stone: Elm 7 N 19 1/2 E. 1.45 3/4, Castleton corner stone 20 links South
Elm (same tree) N 26 1/4 E. 1.53
- 4. 3 inch tile: White Oak 14 N 14 1/4 W. 4.37 1/2
Baltimore Corner 20 links South White Oak 14 (same tree) N 19 1/4 W. 4.57
- 5. Stone set by Willson 1879. Castleton corner stone 10 links West
- 6. Pointed Stone in Road. S E Corner Church Wall trace N 59 3/4 W. 26 links
Maple 16 S 77 3/4 E. 24 7/8
- 7. Stake & tile Black Walnut 8 N 81 W. 62. Jarvis by Willson 1879. tree in corner
New Witness Black Walnut 14 S 84 1/2 W. 67
- 8. Tile White Oak 10 N 72 1/4 E. 77 3/4
Baltimore corner 20 links South White Oak 6 N 55 1/2 E. 87 1/2 (Prod. 1879)
- 9. A D Gibson's South West corner 20 rods North of h.
Stake Black Walnut 12 S 11 1/2 E. 91 1/4; Butternut 10 N 13 1/4 W. 66
- 10. Gibson's South East corner 5 chains North & 2 chains 56 links West of h.
Flat Iron stake in Road. Black Walnut 4 N 7 1/4 E. 2.03
- 11. Iron stake in angle of Road North 2 3/4 chains. Same tree S 17 1/2 E. 96 1/2
Corner at angle of road 7 1/2 chains South of h.
- 12. 3 inch tile. Brick Stone w/ glass 6 inch tile below } Apple 14 S 82 1/2 W. 11
Gibson's N E corner in 1/4 line 29 chains } 16 S 57 1/2 W. 11 1/2
- 13. 3 1/2 links South of 5 Stone 16" x 12" x 10" & other Permissible pins found
- 14. Maple 18 S 9 1/4 W. 16 - Beach 7 N 27 1/2 W. 22
- 15. Stake Red Oak 6 N 41 3/4 E. 18 1/4; White Oak 5 S 15 E. 15 3/4
- 16. North West corner Gibson's parcel 29 chains 3 1/2 links South of 20 chains
66 1/2 links West of 1/4 corner at 5. 2 three inch steel stake
- 17. South branch of double Red Oak 10 North 57 links
Corner 20.66 1/2 West & 33.38 1/2 South of 5; Tile & stake
Red Oak 9 N 51 E. 7 1/2 links