

1993

STATE OF MICHIGAN
COUNTY OF BARRY
RECEIVED FOR RECORD

COMMISSION BARRY COUNTY REMONUMENTATION
LAND CORNER RECORDATION CERTIFICATE
Filing Requirement of Act 74, Mich. P.A. 1970

JUL 20 11 21 AM '93

Sandy Schondelmayer
REGISTER OF DEEDS

For corners in

BARRY Located In: Corner Code #
(County)

- 1. Public Land Survey **2N** ~~7W~~ **A-3**
T R **MAPLE GROVE TOWNSHIP**
T R **(TOWN LINE COR. SEC. 6-7)**
T R
- 2. Property Controlling S T R
in Section S T R
- 3. Miscellaneous S T R
Property in Sec. S T R

002029

Register of Deeds Stamp & File Number

- 4. Lot No. _____, Recorded Plat _____
- 5. Private Claims _____

	A	B	C	D	E	F	G	H	I	J	K	L	M
2			5		4		3		2		1		
3													
4	7		8		9		10		11		12		
5													
6	18		17		16		15		14		13		
7													
8	19		20		21		22		23		24		
9													
10	30		29		28		27		26		25		
11													
12	31		32		33		34		35		36		
13													

I, **BRIAN REYNOLDS**, in a field survey on **MAY**, 19**93**, do hereby certify that under requirements of P.A. 74, Michigan P.A. of 1970, the corner points mentioned in lines 1 and 2 above were in conformance with regulations and rules therefore as required in the current manual of survey instructions of the United States Department of the Interior, Bureau of Land Management or by a decree of a Court of Law and/or that the corner points mentioned in lines 3, 4 and 5 above were in conformance with the rules of the Michigan Board of Land Surveyors or by a Decree of a Court of Law; established, re-established, monumented, re-monumented, recovered, found as expressed below:

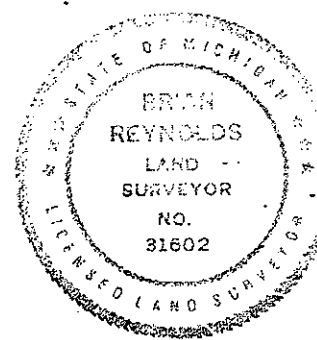
NOTE: Not more than 4 corners, all in the same town and range, may be recorded on this certificate.

A. Description of original monument and accessories and/or subsequent restoration:

- G.L.O. :** West 74.45 West boundry 20 North of post. set post for corner to section 6 & 7.
B. Ash 18, N49E, 14
Birch 6, S31 1/2E, 94
- A.C. Willson (L. 1, P. 282)(April 12, 1879)** Set SW corner. (L. 2, P.15)(Dec. 1858) W 1/2 of N Sec. line is 34.66ch.
- Heath (1904)(L. 3, p. 98-99)** Tile 3" :
White Oak 14, N12 3/4W, 4.37 1/2 (Balt. Cor. 20 lks. S.)
White Oak (same tree)
N14 1/4W, 4.57

B. Description of corner evidence found and/or method applied in restoring or reestablishing corner:

- REYNOLDS (JUL 92)**
FOUND CLAY TILE; SET 1/2" REROD IN CENTER:
40 D NAIL - ORANGE CAP - NE. FACE - 12" BLACK WALNUT - S40E - 22.70'
" " " - N. FACE - 12" BLACK WALNUT - S45W - 12.85'
" " " - S. FACE - 10" BLACK WALNUT - N45W - 22.16'
CENTER TOP - TELE. RISER - S45E - 30.29'
BALTIMORE CORNER - 13.20' - S.



C. Description of monument for corner and accessories established to perpetuate locating the position of the corner:

- REPLACED 1/2" IRON WITH 3/4" IRON PIN, ALUM. REMON. CAP, AND PUNCH HOLE:**
REYNOLDS' (JUL 92) WITNESSES FOUND AND CHECKED;
NEW WITNESSES:
40 D NAIL - BARRY Co. SHINER - NW. FACE - 24" BLACK CHERRY - S30W - 46.41'
" " " - W. FACE - 10" ELM - N15E - 43.24'

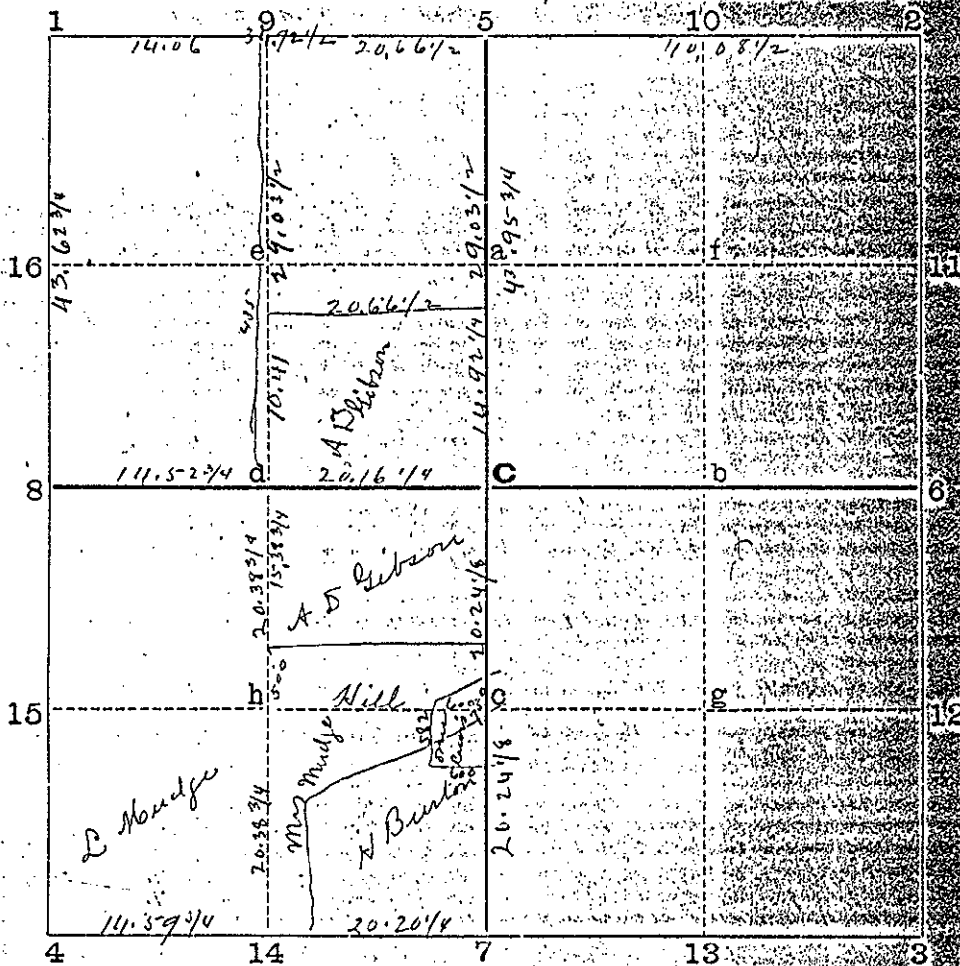
Signed by [Signature] Date 7-19-93
Surveyor's Michigan License No. 31602

STATE OF MICHIGAN, }
COUNTY OF BARRY, }

Received for Record this 5th day of October, A.D. 1904, at 12:30 o'clock
A. Grant, Clerk
Register of

COPY OF MINUTES OF SURVEY.

SECTION 6, Town 2 North, Range 7 West, Meridian of Michigan.



- 1. Three 3 inch tile, Brick at E corner { Black Walnut 12 S 89 1/2 W 2 1/2
Butternut 16 S 19 1/2 W 1 1/2
- 2. Stake: Maple S 31 1/4 E 51 1/4; Elm 12 S 76 E 33 1/4
- 3. Stone: Elm 7 N 19 1/2 E 1.45 3/4, Castleton corner stone 20 links West
Elm. (same tree) N 26 1/4 E 1.53
- 4. 3 inch tile: White Oak 11 N 14 1/4 W 4.37 1/2
Baltimore Corner 20 links South White Oak 14 (same tree) N 19 1/4 W 4.37
- 5. Stone set by Wilson 1879. Castleton corner stone 10 links West
- 6. Pointed Stone in Road. S. E. Corner Church Wall base N 39 3/4 W 26 links
Maple 16 S 77 3/4 E 47 1/2
- 7. Stake & tile Black Walnut 8 N 81 W 62. Set by Wilson 1879. Same place
New Witness Black Walnut 14 S 84 1/2 E
- 8. Tile White Oak 10 N 72 1/4 E 77 3/4
Baltimore corner 20 links South White Oak 6 N 53 1/2 E 87 1/2 (Prod. 1889)
- 9. A. D. Gibson's South West corner 20 rods North of tile
Stake Black Walnut 12 S 11 1/2 E 91 1/4; Butternut 10 N 13 1/4 W 6.6
- 10. Gibson's South East corner 5 chains North & 2 chains 56 links West of
Flat Iron Stake in Road. Black Walnut 11 N 8 1/4 E 2.03
- 11. Iron Stake in angle of Road North 2 7/10 chains. Same tree S 17 1/2 E 96 1/2
corner at angle of road 7 1/10 chains South of 6
- 12. 3 inch tile. Brick Stone wall & glass 6 inch tile below { Apple 14 S 82 1/2 W
Gibson's N.E. corner in 1/4 line 29 chains 16 S 77 1/2 W 11 1/2
- 13. 3 1/2 links South of 5 Stone 16" x 12" x 10" & other Reversible. Also point
Maple 18 S 9 1/4 W 16 - Beach 7 N 27 1/2 W 22
- 14. Stake Red Oak 6 N 41 1/4 E 15 1/4; White Oak 5 S 15 E 15 1/2
North West corner Gibson's parcel 29 chains 3 1/2 links South of 16
- 15. 66 1/2 links West of 1/4 corner at 5. 2 three inch tile and stake
South branch of double Red Oak 10 North 5 1/2 links
- 16. Corner 20.66 1/2 West & 33.38 1/2 South of 5. Tile & Stake
Red Oak 9 N 51 E 7 1/2 links