

**SURVEYOR
REMONUMENTATION**

1993

COMMISSION

**BARRY COUNTY REMONUMENTATION
LAND CORNER RECORDATION CERTIFICATE**

Filing Requirement of Act 74, Mich. P.A. 1970

STATE OF MICHIGAN
COUNTY OF BARRY
RECEIVED FOR RECORD

JUL 20 11 21 AM '93

For corners in

BARRY

(County)

Located In:

Corner Code: #

Sandy Schondelmayer

REGISTER OF DEEDS

- 1. Public Land Survey **2N R7W B-3**
T ___ R ___ **MAPLE GROVE TWPSP**
T ___ R ___ **(1/4 COR. SEC. 6-7)**
T ___ R ___
- 2. Property Controlling in Section S ___ T ___ R ___
S ___ T ___ R ___
- 3. Miscellaneous Property in Sec. S ___ T ___ R ___
S ___ T ___ R ___

002028

Register of Deeds Stamp & File Number

- 4. Lot No. _____, Recorded Plat _____
- 5. Private Claims _____

	A	B	C	D	E	F	G	H	I	J	K	L	M
2	6	5	4	3	2	1							
3	⊕												
4	7	8	9	10	11	12							
5													
6	18	17	16	15	14	13							
7													
8	19	20	21	22	23	24							
9													
10	30	29	28	27	26	25							
11													
12	31	32	33	34	35	36							
13													

BRIAN REYNOLDS

MAY

93

I, _____, in a field survey on _____, 19____, do hereby certify that under requirements of P.A. 74, Michigan P.A. of 1970, the corner points mentioned in lines 1 and 2 above were in conformance with regulations and rules therefore as required in the current manual of survey instructions of the United States Department of the Interior, Bureau of Land Management or by a decree of a Court of Law and/or that the corner points mentioned in lines 3, 4 and 5 above were in conformance with the rules of the Michigan Board of Land Surveyors or by a Decree of a Court of Law; established, re-established, monumented, re-monumented, recovered, found as expressed below:

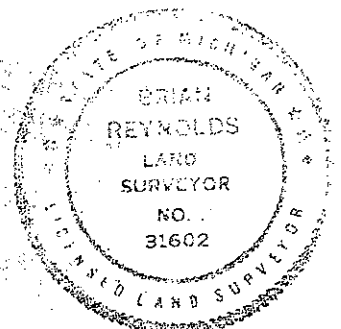
NOTE: Not more than 4 corners, all in the same town and range, may be recorded on this certificate.

A. Description of original monument and accessories and/or subsequent restoration:

G.L.O. : **A.C. Willson (April 12, 1879)(L. 1,P. 282)** **Heath (1904)(L. 3, P. 98-99)**
Be. 18, S19E, 13 **Found S1/4 by original notes: New Bearings:** **Stake & Tile:**
Sugar 10, N54W, 18lks. **Beech 16, N67 1/4E, 53** **Black Walnut 8, N81W, 62**
Black Walnut 8, N81W, 62 **Taken by "willson" (1879),**
Tree larger now:
Black Walnut 14, S84 1/2E, 70 1/2

B. Description of corner evidence found and/or method applied in restoring or reestablishing corner:

REYNOLDS (JUL 92)
FOUND CLAY TILE; SET 1/2" REROD IN CENTER, SURROUNDED WITH STONES:
40 D NAIL - ORANGE CAP - N. FACE - 26" MAPLE - N87E - 17.04'
" " - S. FACE - 20" ASH - N80W - 10.32'
" " - S. FACE - 20" MAPLE - S45E - 30.41'
" " - E. FACE - 20" BLACK WALNUT - N. - 32.86'
1' - N. - E.-W. FENCE; 25' - E. - INTERSECTION OF FENCES



C. Description of monument for corner and accessories established to perpetuate locating the position of the corner:

REPLACED 1/2" IRON WITH 3/4" IRON PIN, ALUM. REMON. CAP, AND PUNCH HOLE:
REYNOLDS' (JUL 92) WITNESSES FOUND AND CHECKED;
NEW WITNESSES:
40 D NAIL - BARRY Co. SHINER - NE. FACE - 18" ASH - N55W - 22.62'
" " - S. FACE - 10" BLACK WALNUT - N45W - 40.36'

Signed by

Date **7-19-93**

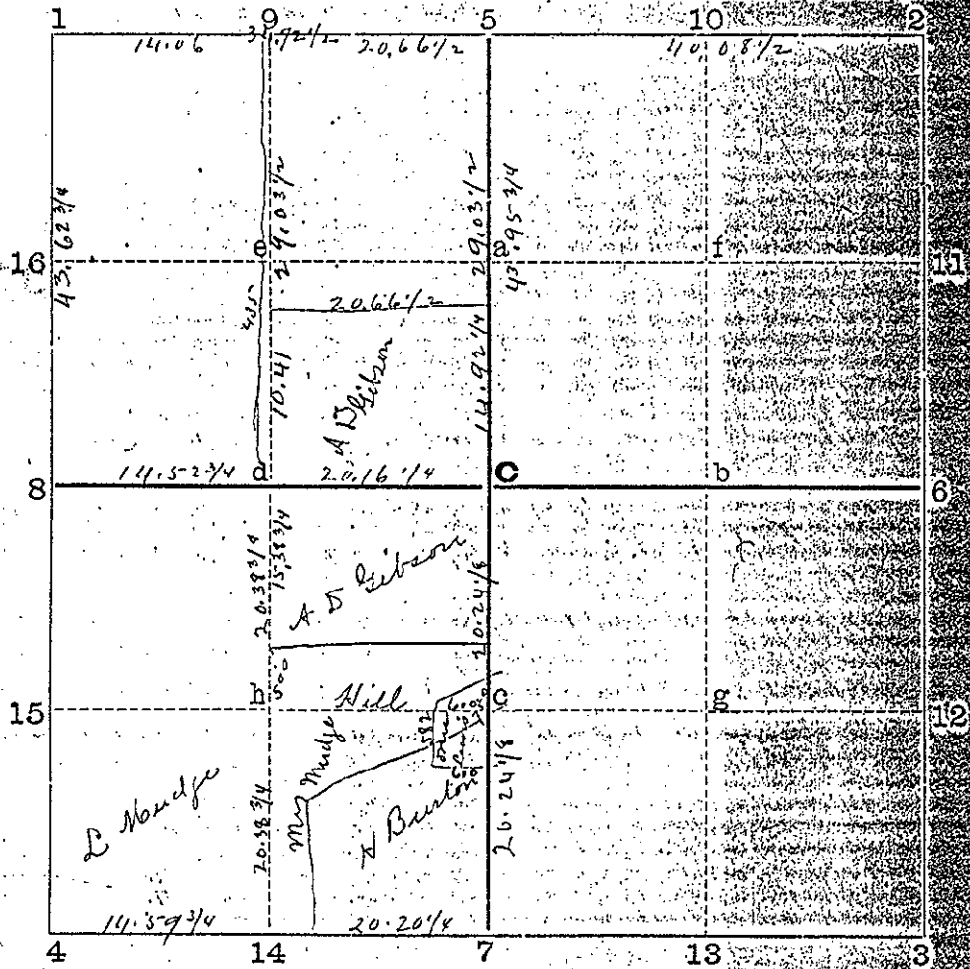
Surveyor's Michigan License No. **31602**

STATE OF MICHIGAN, }
COUNTY OF BARRY, } SS.

Received for Record this 5th day of October, A.D. 1907 at 12 o'clock
A. Cornell, Clerk Register of Deeds

COPY OF MINUTES OF SURVEY.

SECTION 6., Town 2 North., Range 7 West., Meridian of Michigan.



- C Three 3 inch Tiles, Brick at E corner { Black Walnut 12 S 39 1/2 W 6 1/2
Butternut 16 S 19 1/2 W 1 1/4
- 1 Stake: No apple S 31 1/4 E 5.1 1/4; Elm 12 S 76 E 33 1/4
- 2 Stone: Elm 7 N 19 1/2 E 1.45 3/4, Castleton corner stone 20 links West
Elm (pome tree) N 26 1/4 E 1.53
- 3
- 4 3 inch tile: White Oak 14 N 14 3/4 W 4.37 1/2
Baltimore Corner 20 links South White Oak 14 (pome tree) N 14 1/4 W 4.47 1/2
- 5 Stone set by Willson 1879. Castleton corner stone 10 links West
- 6 Pointed Stone in Road. S E Corner Church Wall base N 39 3/4 W 16 1/2 26 links
No apple 16 S 77 3/4 E 4 7/2
- 7 Stake & tile Black Walnut 8 N 81 W 62. Taken by Willson 1879. New Witness Black Walnut 14 S 83 1/2 E 7 1/2
- 8 tile White Oak 10 N 72 1/4 E 77 3/4
Baltimore corner 20 links South White Oak 6 N 55 1/2 E 87 1/2 (Patt 1899)
- 9 A. D. Gibson's South West corner 20 rods North of h.
Stake. Black Walnut 12 S 4 1/2 E 9 1/4; Butternut 10 N 13 1/4 W 6.6
- 10 Gibson's South East corner 5 chains North & 2 chains 5.6 links West of h.
Flat Iron Stake in Road. Black Walnut 11 N 8 1/4 E 2.03
- 11 Iron Stake in angle of Road North 2 2/3 chains. Some tree S 77 1/2 E 9 1/2
corner at angle of road 7 2/3 chains South of h
- 12 3 inch tile. Brick Stone ware & Glass 6 inch tile below { Apple 14 S 82 1/2 W 8 1/2
Gibson's N E corner in 1/4 line 29 chains { 16 S 77 1/2 W 1 1/2
- 13 3 1/2 links South of 5 Stone 16" x 12" x 10" & Olden Percussible Iron point
- 14 No apple 18 S 9 1/4 W 16. Beach 7 N 27 1/2 W 22
- 15 Stake. Red Oak 6 N 41 3/4 E 15 1/4. White Oak 5 S 15 E 15 1/4
North West corner Gibson's parcel 29 chains 3 1/2 links South of 20 chains
- 16 6 1/2 links West of 1/4 corner at 5. 2 three inch tile and stake
South branch of double Red Oak 10 North 5 7/2 links
Corner 20.66 1/2 West & 33.38 3/4 South of 5. Tile & stake
Red Oak 9 N 51 E 7 1/2 links