

DEC 7 2 40 PM '93

Sandy Schindelmarer
 REGISTER OF DEEDS

LAND CORNER RECORDATION CERTIFICATE
 Filing Requirement of Act 74, Mich. P.A. 1970

002104

Register of Deeds Stamp & File Number

For corners in
Barry County
 (County)

Located In: Corner Code #

Maple Grove Township

T 2N R 7W K-5
 T _____ R _____
 T _____ R _____
 T _____ R _____
 T _____ R _____

(Section Cor
 common to Sec.
 11, 12, 13 & 14)

1. Public Land Survey

S _____ T _____ R _____

2. Property Controlling
 in Section

S _____ T _____ R _____

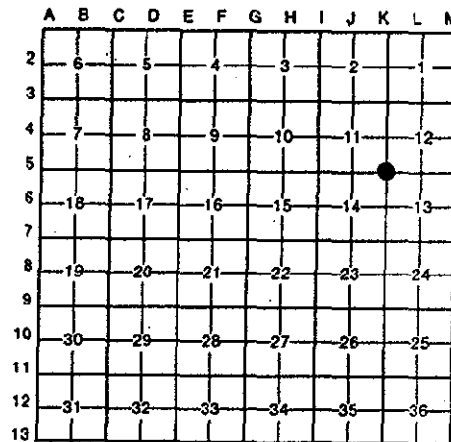
3. Miscellaneous
 Property in Sec.

S _____ T _____ R _____
 S _____ T _____ R _____

4. Lot No. _____ Recorded Plat _____

5. Private Claims _____

I, Kenneth C. Brandt, in a field survey on September 5, 1993, do hereby certify that under requirements of P.A. 74, Michigan P.A. of 1970, the corner points mentioned in lines 1 and 2 above were in conformance with regulations and rules therefore as required in the current manual of survey instructions of the United States Department of the Interior, Bureau of Land Management or by a decree of a Court of Law and/or that the corner points mentioned in lines 3, 4 and 5 above were in conformance with the rules of the Michigan Board of Land Surveyors or by a Decree of a Court of Law; established, re-established, monumented, re-monumented, recovered, found as expressed below:



NOTE: Not more than 4 corners, all in the same town and range, may be recorded on this certificate.

A. Description of original monument and accessories and/or subsequent restoration:

GLO: 18" Elm S.20° E. 20 L. 18" Elm S. 71° W. 1.10 ch.
 County Surveyor (1876) fd. buried stone, Brick & Crockery 10" Maple S.61° W. 95 L.
 12" Swamp oak S.39° E. 1.65 ch.
 County Road Comm. 3" stake & Iron set. All witnesses gone.
 DeKeyser & Assoc. (1958) Iron pipe - All witnesses gone.
 J. King (1983) Mon. Box fd. NE Bolt, NE Bridge abutment in Lawrence Rd. N.75° W. 64.15' Conc.
 R/W marker N.20° E. 95.85'

B. Description of corner evidence found and/or method applied in restoring or reestablishing corner:

Mon. Box with boat spike found
 NE Bolt, NE Bridge abutment N.75° W. 64.15'
 Conc. R/W Marker N.20° E. 95.85'

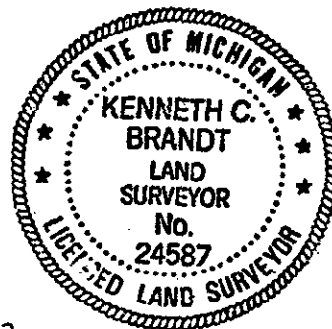
SURVEY &
 REMONUMENTATION

APR 05 1994

COMMISSION

C. Description of monument for corner and accessories established to perpetuate locating the position of the corner:

Removed boat spike from mon box, set 3/4" Iron pin with aluminum Remon. cap and punch mark
 New witnesses:
 Inside Cor. E. end South Conc. Bridge Rail S.75° W. 64.24'
 Inside Cor. E. end North Conc. Bridge Rail N.75° W. 63.62'
 Nail & Remon. shiner E. side P.Pole N.20° E. 96.37'
 Nail & Remon. shiner W. side P.Pole S.20° E. 139.17'
 In center of Highways East, West and South



Signed by Kenneth C. Brandt

Date November 5, 1993

Surveyor's Michigan License No. 24587