

SURVEY & REMONUMENTATION

BARRY COUNTY REMONUMENTATION

JUL 24 1997

LAND CORNER RECORDATION CERTIFICATE
Filing Requirement of Act 74, Mich. P.A. 1970

STATE OF MICHIGAN
COUNTY OF BARRY
REGISTER OF DEEDS

MAR 5 9 25 AM '97

COMMISSION

For corners in **BARRY**
(County)

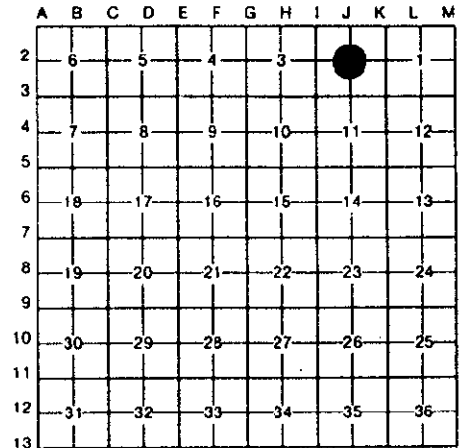
Sandy J. ...
REGISTER OF DEEDS

Located In: Corner Code #

	2N	9W	J-2
1. Public Land Survey	T	R	
CENTER OF SECTION	T	R	
2 HOPE TOWNSHIP	T	R	
	T	R	
2. Property Controlling in Section	S	T	R
	S	T	R
3. Miscellaneous Property in Sec.	S	T	R
	S	T	R
4. Lot No. _____, Recorded Plat _____			
5. Private Claims _____			

002480

Register of Deeds Stamp & File Number



BRIAN REYNOLDS

4 SEPTEMBER

96

I, **BRIAN REYNOLDS**, in a field survey on **4 SEPTEMBER**, 19**96**, do hereby certify that under requirements of P.A. 74, Michigan P.A. of 1970, the corner points mentioned in lines 1 and 2 above were in conformance with regulations and rules therefore as required in the current manual of survey instructions of the United States Department of the Interior, Bureau of Land Management or by a decree of a Court of Law and/or that the corner points mentioned in lines 3, 4 and 5 above were in conformance with the rules of the Michigan Board of Land Surveyors or by a Decree of a Court of Law; established, re-established, monumented, re-monumented, recovered, found as expressed below:

NOTE: Not more than 4 corners, all in the same town and range, may be recorded on this certificate.

A. Description of original monument and accessories and/or subsequent restoration:

- 1. THIS CORNER WAS NOT SET BY THE GENERAL LAND OFFICE.**
- 2. COUNTY SURVEYOR RECORDS: A.D. RORK, FEB. 28, 1868 (L.2,P.75) "SET POST AT CROSSING OF 1/4 LINES"**

***** NO OTHER RECORDED HISTORICAL INFORMATION AVAILABLE FOR THIS CORNER *****

ACT 345 BARRY COUNTY REMONUMENTATION
APPROVED BY PEER REVIEW AT A MEETING HELD ON

9-9-96

BR

BRIAN REYNOLDS

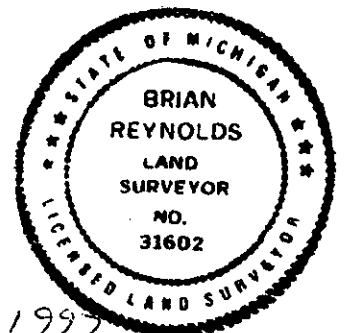
COUNTY SURVEYOR

B. Description of corner evidence found and/or method applied in restoring or reestablishing corner:

FOUND REMAINS OF A CORNER FENCE POST ON A VERY OLD FENCE LINE RUNNING NORTH AND SOUTH, ABOUT 2 FEET SOUTHEASTERLY OF AN OLD RAILROAD RIGHT-OF-WAY FENCE RUNNING SOUTHWEST-NORTHEAST. TRAVERSED ENTIRE SOUTHEAST 1/4 OF SECTION 2, TYING IN OCCUPATION LINES. ALSO TRAVERSED TO THE NORTH LINE OF SECTION 2, TYING IN THE FRACTIONAL 1/8 CORNER OCCUPATION AS INDICATED IN THE SURVEY NOTES BY RORK. FOUND THAT THE OLD FENCE CORNER FITS A PROPORTION OF RORK'S DISTANCES WEST TO 1/4 CORNER, SOUTH TO 1/4 CORNER, EAST TO 1/8 LINE OCCUPATION AND NORTH TO TOWN LINE AND 1/8 CORNER OCCUPATION. EXCAVATED AROUND CORNER POST TO A DEPTH OF 2'+/- FOUND WELL DEFINED REMAINS OF FENCE CORNER POST. FOUND REMAINS OF OLD CEDAR STAKE APPROXIMATELY 4" IN DIAMETER AND 18" LONG JUST BELOW THE NATURAL GRADE AND 0.5' WEST-NORTHWEST OF THE OLD CORNER POST. ACCEPTED REMAINS OF CEDAR STAKE AS CORNER ESTABLISHED BY RORK. PLACED STANDARD BARRY COUNTY REMONUMENTATION MONUMENT AT REMAINS OF OLD CEDAR STAKE.

C. Description of monument for corner and accessories established to perpetuate locating the position of the corner:

- SET STANDARD BARRY COUNTY REMONUMENTATION MONUMENT (WITH ALUMINUM CAP)**
- SET 20d NAIL W/REMON TAG IN THE EAST SIDE OF A 14" POPLAR N44°W 10.61'**
- SET 20d NAIL W/REMON TAG IN THE WEST SIDE OF AN 8" MAPLE CLUSTER N4°W 5.62'**
- SET 20d NAIL W/REMON TAG IN THE SOUTH SIDE OF A 28" TWIN MAPLE N71°E 21.27'**
- SET 20d NAIL W/REMON TAG IN THE WEST SIDE OF A WOODEN FENCE POST N1°E 3.09'**
- SET 20d NAIL W/REMON TAG IN THE WEST SIDE OF AN 8" OAK S1°E 18.33'**
- CORNER LIES 0.5' WEST OF A NORTH-SOUTH FENCE**
- 33'+/- SOUTHEAST OF THE CENTERLINE OF AN ABANDONED RAILROAD BED**



Signed by *[Signature]*

Date **FEB 18 1997**

Surveyor's Michigan License No. **31602**