

MAY 29 1997

BARRY COUNTY REMONUMENTATION
LAND CORNER RECORDATION CERTIFICATE
Filing Requirement of Act 74, Mich. P.A. 1970

DEC 9 2 09 PM '96

COMMISSION

Sandy Schonhelmeyer
REGISTER OF DEEDS

<u>BARRY</u> (County)	Located In:	Corner Code #
1. Public Land Survey	T <u>3</u> R <u>7W</u>	<u>F-3</u>
1/4 COR COMMON TO	T <u> </u> R <u> </u>	<u> </u>
SEC'S 4 & 9	T <u> </u> R <u> </u>	<u> </u>
CASTLETON TWP.	T <u> </u> R <u> </u>	<u> </u>
2. Property Controlling	S <u> </u> T <u> </u> R <u> </u>	<u> </u>
in Section	S <u> </u> T <u> </u> R <u> </u>	<u> </u>
3. Miscellaneous	S <u> </u> T <u> </u> R <u> </u>	<u> </u>
Property in Sec.	S <u> </u> T <u> </u> R <u> </u>	<u> </u>

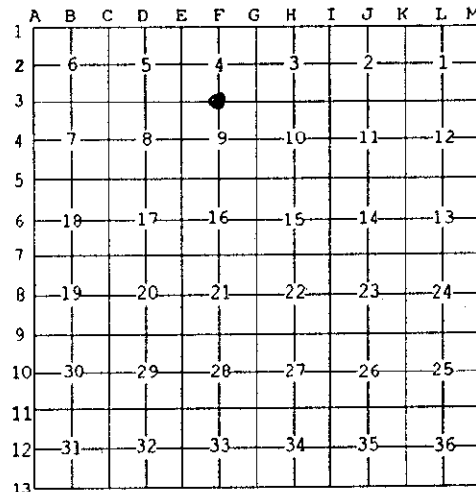
002427

Register of Deeds Stamp & File Number

4. Lot No. _____, Recorded Plat _____
5. Private Claims _____

I, RAYMOND MOORED in a field survey on SEPT, 1995, do hereby state that under requirements of P.A. 74, Michigan P.A. of 1970, the corner points mentioned in lines 1 and 2 above were in conformance with regulations and rules therefore as required in the current manual of survey instructions of the United States Department of the Interior, Bureau of Land Management or by a decree of a Court of Law and /or that the corner points mentioned in lines 3, 4 and 5 above were in conformance with the rules of the Michigan Board of Land Surveyors or by a Decree of a Court of Law, established, re-established, monumented, recovered, found as expressed below:

NOTE: Not more than 2 corners, all in the same town and range, may be recorded on this certificate.



A. Description of original monument and accessories and/or subsequent restoration:

G.L.O. SYLVESTER SIBLEY D.S. 1830 (R 7 W, P. 112) WEST CORRECTED 40.00. AN ELM 9 N.4E. 9 A BEECH 20 S 25 W 25.

B. Description of corner evidence found and/or method applied in restoring or reestablishing corner:

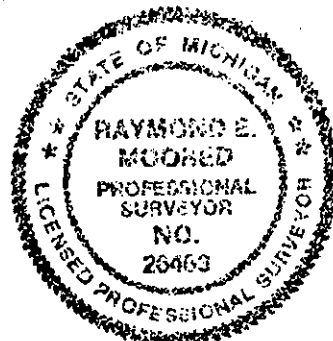
FOUND NO EVIDENCE OF CORNER LOCATION. ESTABLISHED CORNER IN CENTERLINE OF ROAD AT DOUBLE DISTANCE FROM SE CORNER THROUGH N-S 1/8 LINE OCCUPATION IN SOUTHEAST QUARTER ACCEPTED AS BEST AVAILABLE EVIDENCE OF CORNER LOCATION. SET STANDARD BARRY COUNTY REMONUMENTATION IRON WITH CAP.

ACT 345 BARRY COUNTY REMONUMENTATION
APPROVED BY PEER REVIEW AT A MEETING HELD ON

13 NOV. '95 BR
BRIAN REYNOLDS COUNTY SURVEYOR

C. Description of monument for corner and accessories established to perpetuate locating the position of the corner:

SET STANDARD BARRY COUNTY REMONUMENTATION IRON WITH CAP.
-NAIL & TAG IN NW SIDE 12" CEDAR S60°W 56.41'
-NAIL & TAG IN E SIDE 24" HICKORY S20°W 25.44'
-NAIL & TAG IN W SIDE 36" HICKORY S25°E 25.55'
-NAIL & TAG IN N SIDE 40" COTTONWOOD S70°E 84.65'



Signed by Raymond Moored
Surveyor's Michigan License No. 26463

Date 11/4/96