

SURVEY & REMONUMENTATION

FEB 17 1998

Barry County Remonumentation

SECTION

**LAND CORNER RECORDATION CERTIFICATE
Filing Requirement of Act 74, Mich. P.A. 1970**

For corners in Barry

(County)	Located In:	Corner Code ##
1. Public Land Survey	T 3N R 8W T _____ T _____ T _____ T _____	I-6 (W 1/4 14) Hastings Twp.
2. Property Controlling in Section	S _____ S _____ S _____	
3. Miscellaneous Property in Sec.	S _____ S _____ S _____	

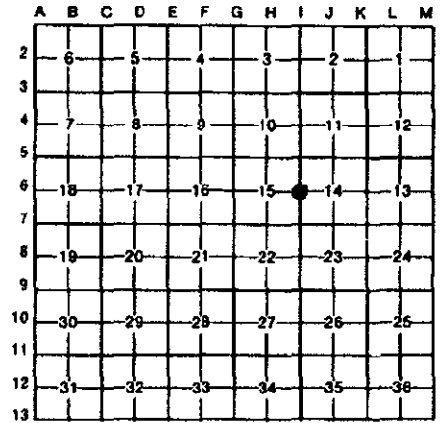


2620
Page: 1 of 1
10/20/1997 01:01P

Register of Deeds Stamp & File Number

4. Lot No. _____, Recorded Plat _____
5. Private Claims _____

I, Steven Koerber, in a field survey on August 31, 1996, do hereby certify that under requirements of P.A. 74, Michigan P.A. of 1970, the corner points mentioned in lines 1 and 2 above were in conformance with regulations and rules therefore as required in the current manual of survey instructions of the United States Department of the Interior, Bureau of Land Management or by a decree of a Court of Law and/or that the corner points mentioned in lines 3, 4 and 5 above were in conformance with the rules of the Michigan Board of Land Surveyors or by a Decree of a Court of Law; established, re-established, monumented, re-monumented, recovered, found as expressed below:



NOTE: Not more than 4 corners, all in the same town and range, may be recorded on this certificate.

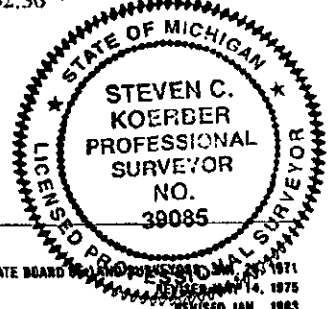
- A. Description of original monument and accessories and/or subsequent restoration:
- I-6 GLO - Sylvester Sibley D.S. 1830
 - A. Sugar 13 N25W 5
 - A. Do 16 S4W 20
 - 1. Bowen- December 24, 1877
 - Found old bearings & took new one.
 - Beech 6 N75E 3

- B. Description of corner evidence found and/or method applied in restoring or reestablishing corner:
- I-6 Found no monument representing this corner. Set this corner by proportion measurement using the Bowen survey of 1877, and line extended from the found Center of section and the East 1/4 corner. And is accepted as a careful and faithful reestablishment of the position of the original corner.

**ACT 345 BARRY COUNTY REMONUMENTATION
APPROVED BY PEER REVIEW AT A MEETING HELD ON
July 8, 1996
BRIAN REYNOLDS COUNTY SURVEYOR**

- C. Description of monument for corner and accessories established to perpetuate locating the position of the corner:
- I-6 Set Standard Barry Co. Mon. (3/4" x 24" Iron Rod with Aluminum cap)
 - Set spike & Barry Co. Remon. tag in SE side 36" Oak
 - Set spike & Barry Co. Remon. tag in N side 8" Ash
 - Set spike & Barry Co. Remon. tag in E. side 12" Maple
 - Set spike & Barry Co. Remon. tag in N. side 12" Ash

N 55 E	9.81'
S 75° E	39.28'
N 15° W	53.93'
East	62.36"



Signed by [Signature] Date 10-23-97
Surveyor's Michigan License No. 39085