

SURVEY & REMONUMENTATION

AUG 22 1995

COMMISSION

BARRY COUNTY REMONUMENTATION

STATE OF MICHIGAN COUNTY OF BARRY RECEIVED FOR RECORD

JAN 25 8 34 AM '95

LAND CORNER RECORDATION CERTIFICATE Filing Requirement of Act 74, Mich. P.A. 1970

Sandy Schindelmarper REGISTER OF DEEDS

For corners in BARRY (County)

Table with columns: Located In:, Corner Code: #, and rows for Public Land Survey, Property Controlling, and Miscellaneous.

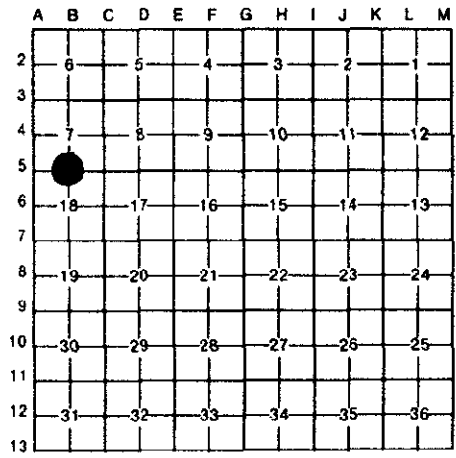
002269

Register of Deeds Stamp & File Number

1. Public Land Survey 1/4 CORNER COMMON TO SECTIONS 7 & 18 OF RUTLAND TOWNSHIP

2. Property Controlling in Section
3. Miscellaneous Property in Sec.

4. Lot No. , Recorded Plat
5. Private Claims



I, BRIAN REYNOLDS in a field survey on 20 OCTOBER 1994 do hereby certify that under requirements of P.A. 74, Michigan P.A. of 1970, the corner points mentioned in lines 1 and 2 above were in conformance with regulations and rules therefore as required in the current manual of survey instructions of the United States Department of the Interior, Bureau of Land Management or by a decree of a Court of Law and/or that the corner points mentioned in lines 3, 4 and 5 above were in conformance with the rules of the Michigan Board of Land Surveyors or by a Decree of a Court of Law, established, re-established, monumented, re-monumented, recovered, found as expressed below.

NOTE: Not more than 4 corners, all in the same town and range, may be recorded on this certificate.

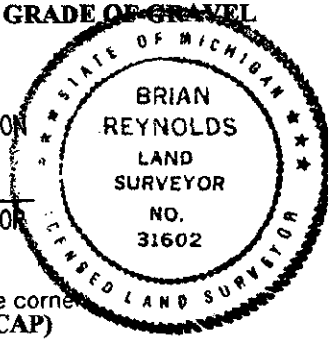
A. Description of original monument and accessories and/or subsequent restoration:

- 1 GENERAL LAND OFFICE: SYLVESTER SIBLEY, D.S., 1831 (R9W, P.14), A W. OAK 8 S24E 34 Do. 9 N29W 38
2 COUNTY SURVEYOR RECORDS: A.N. BATEMAN, MAR. 30, 1902 (L.3, P.62), "STONE"
3 NO OTHER RECORDED HISTORICAL INFORMATION AVAILABLE FOR THIS CORNER

B. Description of corner evidence found and/or method applied in restoring or reestablishing corner:

PRELIMINARY CHECK OF INTERSECTION OF GRAVEL ROADS INDICATED NO MAGNETIC MONUMENT, NOR ANY CLEAR INDICATION OF WHERE TO EXCAVATE. FOUND STAKE AT B-4 AND CROCKERY, CHINA, GLASS, CHARCOAL, AND REMAINS OF WOOD STAKE AT 1/16 CORNER MIDWAY BETWEEN B-4 AND B-5. DOUBLED LINE AND DISTANCE FROM B-4 THROUGH 1/16 CORNER, LESS THAN 2 FEET FROM POINT THUS DETERMINED FOUND 1 1/4" X 4" X 18" TAPERED STONE CIRCLED BY SMALL STONES APPROXIMATELY 3" BELOW GRADE OF GRAVEL ROAD. REPLACED STONE WITH STANDARD BARRY COUNTY REMONUMENTATION MONUMENT.

ACT 345 BARRY COUNTY REMONUMENTATION APPROVED BY PEER REVIEW AT A MEETING HELD ON 6 Dec '94 BRIAN REYNOLDS COUNTY SURVEYOR



C. Description of monument for corner and accessories established to perpetuate locating the position of the corner: SET STANDARD BARRY COUNTY REMONUMENTATION MONUMENT (3/4"X36"W/ALUMINUM CAP)

- SET 40d NAIL W/PLASTIC CAP IN THE NORTHWEST SIDE OF A 20" OAK N63°E 14.94'
SET 40d NAIL W/PLASTIC CAP IN THE EAST SIDE OF A 14" OAK N6°E 66.08'
SET 40d NAIL W/PLASTIC CAP IN THE NORTHEAST SIDE OF A UTILITY POLE S65°E 84.28'
SET 40d NAIL W/PLASTIC CAP IN THE WEST SIDE OF A 14" OAK N20°W 79.98'
SET 40d NAIL W/PLASTIC CAP IN THE SOUTH SIDE EAST TRUNK OF A 24" TWIN OAK N75°W 135.34'
7'+/- NORTH OF THE CENTERLINE OF BOWEN'S MILL ROAD
6'+/- EAST OF THE CENTERLINE OF OAK ROAD

Signed by [Signature] Surveyor's Michigan License No. 31602

Date JANUARY 25, 1995