

SURVEY & REMONUMENTATION

AUG 22 1995

COMMISSION

BARRY COUNTY REMONUMENTATION

STATE OF MICHIGAN COUNTY OF BARRY RECEIVED FOR RECORD

JAN 25 8 34 AM '95

LAND CORNER RECORDATION CERTIFICATE Filing Requirement of Act 74, Mich. P.A. 1970

Sandy Schondelmarper REGISTER OF DEEDS

For corners in BARRY

(County)

Located In: Corner Code #

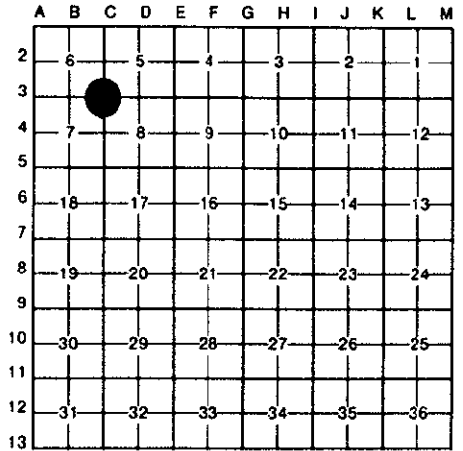
1. Public Land Survey CORNER COMMON TO SECTIONS 5, 6, 7, & 8 RUTLAND TOWNSHIP

Table with columns T, R, S and values 3N, 9W, C-3

002268

Register of Deeds Stamp & File Number

- 2. Property Controlling in Section
3. Miscellaneous Property in Sec.
4. Lot No.
5. Private Claims



BRIAN REYNOLDS in a field survey on 22 OCTOBER 1994

do hereby certify that under requirements of P.A. 74, Michigan P.A. of 1970, the corner points mentioned in lines 1 and 2 above were in conformance with regulations and rules therefore as required in the current manual of survey instructions of the United States Department of the Interior, Bureau of Land Management or by a decree of a Court of Law and/or that the corner points mentioned in lines 3, 4 and 5 above were in conformance with the rules of the Michigan Board of Land Surveyors or by a Decree of a Court of Law; established, re-established, monumented, re-monumented, recovered, found as expressed below:

NOTE: Not more than 4 corners, all in the same town and range, may be recorded on this certificate.

A. Description of original monument and accessories and/or subsequent restoration:

- 1 GENERAL LAND OFFICE: SYLVESTER SIBLEY, D.S., 1831 (R9W,P.141), A BURR OAK 10 N85 1/2W 157 Do. W. OAK 18 S.26 1/2E 182
2 COUNTY SURVEYOR RECORDS: A.N. BATEMAN, MAR. 30, 1902 (L.3,P.62), "CLAY FOR CORNER" 10in OAK N45°W 47 1/2 FEET 12" OAK S44 1/2°E 47 1/2 FEET
3 COUNTY ROAD COMMISSION: 6-10-75 "IRON" P. POLE S60°W 53.4' 14" OAK W. 32.8' 26" OAK N40°W 50.8' MONU. BOX
4 ALSO: "1/2" IRON PIPE" P. POLE S80°W 49.2' 24" OAK N30°W 46.7' 16" OAK W. 25.45'
5 LAND CORNER RECORDATION CERTIFICATE: #148, BY DONALD DAVIS, P.S. #17617, SEPT. 10, 1974, "5/8" IRON IN MONUMENT BOX" 14" OAK WEST 32.8' 26" OAK N40°W 50.8' POWER POLE S60°W 53.4'
6 NO OTHER RECORDED HISTORICAL INFORMATION AVAILABLE FOR THIS CORNER

B. Description of corner evidence found and/or method applied in restoring or reestablishing corner:

FOUND 5/8" IRON IN MONUMENT BOX AND ALL OF DAVIS' WITNESSES. THE WITNESSES IN ITEM 4 ABOVE WOULD SEEM TO CONFLICT WITH DAVIS' CORNER, INDICATING CORNER MAY BE 4'+/- WEST OF POSITION BY DAVIS. CHECKED FOR IRON 4' WEST, FOUND NOTHING. TRAVERSED ENTIRE SECTION 7, FOUND DISTANCES FROM IRON BY DAVIS AT C-3 TO IRON AT B-3 BY BONNEMA AND A-3 BY BONNEMA TO CONFORM REMARKABLY WELL WITH SURVEY BY BATEMAN IN 1902. ACCEPTED IRON BY DAVIS AS A PROPER RESTORATION OF THE CORNER BY BATEMAN.

REPLACED FOUND IRON WITH STANDARD BARRY COUNTY REMONUMENTATION MONUMENT.

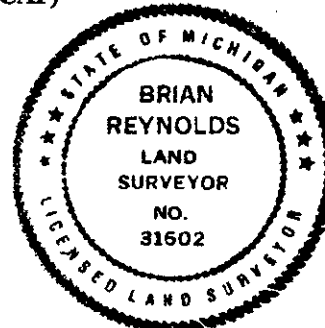
ACT 345 BARRY COUNTY REMONUMENTATION APPROVED BY PEER REVIEW AT A MEETING HELD ON

1 NOV. 1994 BRIAN REYNOLDS

ISR COUNTY SURVEYOR

C. Description of monument for corner and accessories established to perpetuate locating the position of the corner:

- SET STANDARD BARRY COUNTY REMONUMENTATION MONUMENT (3/4"X36"W/ALUMINUM CAP)
SET 40d NAIL W/REMON TAG IN THE EAST SIDE OF A 28" OAK N44°W 52.27'
SET 40d NAIL W/REMON TAG IN THE NORTHWEST SIDE OF AN 8" CHERRY N55°E 104.36'
SET 40d NAIL W/REMON TAG IN THE SOUTH SIDE OF A UTILITY POLE S68°W 53.62'
SET 40d NAIL W/REMON TAG IN THE SOUTHEAST SIDE OF A 30" OAK S18°W 97.17'
SET 40d NAIL W/REMON TAG IN THE SOUTHWEST SIDE OF A 30" OAK S77°E 177.45'
CORNER LIES 0.5' WEST OF PAINTED CENTERLINE OF WHITMORE ROAD APPROXIMATELY ON CENTERLINE OF UPTON ROAD



Signed by [Signature] Surveyor's Michigan License No. 31602

Date JANUARY 24, 1995