

AUG 22 1995

COMMISSION

BARRY COUNTY REMONUMENTATION

STATE OF MICHIGAN COUNTY OF BARRY RECEIVED FOR RECORD

JAN 25 8 34 AM '95

Sandy Schindelmarper REGISTER OF DEEDS

LAND CORNER RECORDATION CERTIFICATE Filing Requirement of Act 74, Mich. P.A. 1970

For corners in BARRY

(County)

Located In:

Corner Code #

Table with 3 columns: Description, T, R, and Corner Code. Includes entries for Public Land Survey, Property Controlling, and Miscellaneous Property.

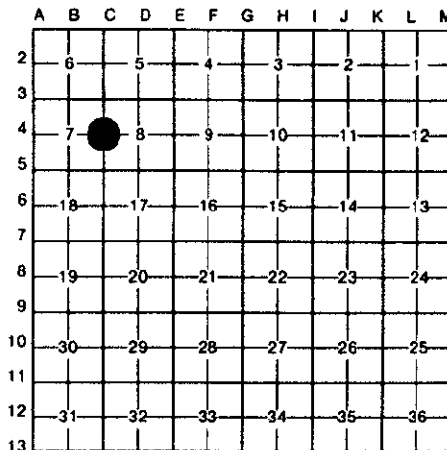
002267

Register of Deeds Stamp & File Number

- 4. Lot No. , Recorded Plat
5. Private Claims

BRIAN REYNOLDS 20 OCTOBER 1994

I, in a field survey on do hereby certify that under requirements of P.A. 74, Michigan P.A. of 1970, the corner points mentioned in lines 1 and 2 above were in conformance with regulations and rules therefore as required in the current manual of survey instructions of the United States Department of the Interior, Bureau of Land Management or by a decree of a Court of Law and/or that the corner points mentioned in lines 3, 4 and 5 above were in conformance with the rules of the Michigan Board of Land Surveyors or by a Decree of a Court of Law; established, re-established, monumented, re-monumented, recovered, found as expressed below:



NOTE: Not more than 4 corners, all in the same town and range, may be recorded on this certificate.

A. Description of original monument and accessories and/or subsequent restoration:

- 1 GENERAL LAND OFFICE: SYLVESTER SIBLEY, D.S., 1831 (R9W, P141) A. W. OAK 22 S72W 25 Do. 20 S48 1/2E 29
2 COUNTY SURVEYOR RECORDS: A.N. BATEMAN. MAR 30, 1902 (L.3, P.62) "STAKE" GOVT WITNESS LEFT 10in OAK S80 1/2°W 26 1/5 ft.
3 IRON SET BY BRIAN REYNOLDS, P.S. #31602, FEBRUARY, 1990, ON LINE BETWEEN C-3 AND C-5 AND IN LINE WITH TREE ROW AND FENCE EAST. 11" OAK S30°W 47.90' 18" OAK N75°W 46.36' 30" OAK EAST 40.68' (NOT PREVIOUSLY RECORDED)
4 NO OTHER RECORDED HISTORICAL INFORMATION AVAILABLE FOR THIS CORNER

B. Description of corner evidence found and/or method applied in restoring or reestablishing corner:

FOUND IRON IN BITUMINOUS ROADWAY AND ALL WITNESSES BY REYNOLDS. ACCEPTED IRON BY REYNOLDS (1990) AS THE PROPER RESTORATION OF THE CORNER. REPLACED 1/2" IRON WITH STANDARD BARRY COUNTY REMONUMENTATION MONUMENT AND INSTALLED MONUMENT BOX.

ACT 345 BARRY COUNTY REMONUMENTATION APPROVED BY PEER REVIEW AT A MEETING HELD ON

6 Dec '94 BRIAN REYNOLDS

BR COUNTY SURVEYOR



C. Description of monument for corner and accessories established to perpetuate locating the position of the corner:

SET STANDARD BARRY COUNTY REMONUMENTATION MONUMENT (3/4"X36"W/ALUMINUM CAP) IN MONUMENT BOX
FOUND NAIL IN THE SOUTH SIDE OF A 30" OAK N90°E 40.68'
FOUND NAIL IN THE NORTHWEST SIDE OF A 12" OAK S30°W 47.90'
FOUND NAIL IN THE SOUTH SIDE EAST TRUNK OF A 20" TWIN OAK N75°W 46.36'
SET 40d NAIL W/PLASTIC TAG IN THE NORTHEAST SIDE OF AN 18" OAK N40°W 52.83'
SET 40d NAIL W/PLASTIC TAG IN THE SOUTHEAST SIDE OF A 12" CHERRY S70°W 48.91'
0.5' EAST OF THE CENTERLINE OF WHITMORE ROAD

Signed by [Signature]

Date JANUARY 24, 1995

Surveyor's Michigan License No. 31602