

**SURVEY & REMONUMENTATION**

APR 26 1995

**COMMISSION**

**Barry County Remonumentation  
LAND CORNER RECORDATION CERTIFICATE  
Filing Requirement of Act 74, Mich. P.A. 1970**

STATE OF MICHIGAN  
COUNTY OF BARRY  
RECEIVED FOR RECORD

DEC 8 8 15 AM '94

Sandy Schondelmarjer  
REGISTER OF DEEDS

002255

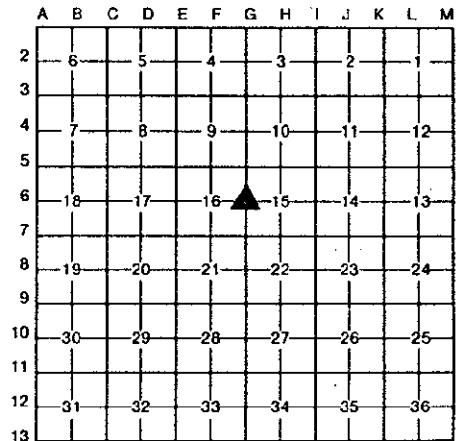
Register of Deeds Stamp & File Number

corners in Barry (County)	Located In:	Corner Code #
Public Land Survey	T <u>3N</u> R <u>9W</u>	G-6 (E $\frac{1}{2}$ , 16) Rutland Twp.
	T _____ R _____	_____
	T _____ R _____	_____
	T _____ R _____	_____
Property Controlling in Section	S _____ T _____ R _____	_____
Miscellaneous Property in Sec.	S _____ T _____ R _____	_____

Lot No. \_\_\_\_\_, Recorded Plat \_\_\_\_\_  
Private Claims \_\_\_\_\_

John C. Bueche, in a field survey on October, 19 94,  
hereby certify that under requirements of P.A. 74, Michigan P.A. of 1970, the corner points mentioned in lines 1 and 2 above were in conformance with regulations and rules therefore as required in the current manual of survey instructions of the United States Department of the Interior, Bureau of Land Management or by a decree of a Court of Law and/or that the corner points mentioned in lines 3, 4 and 5 above were in conformance with the rules of the Michigan Board of Land Surveyors or by a Decree of a Court of Law; established, re-established, monumented, re-monumented, recovered, found as expressed below:

**NOTE: Not more than 4 corners, all in the same town and range, may be recorded on this certificate.**



Description of original monument and accessories and/or subsequent restoration:

G-6 GLO	Barry Co. Rd. Comm.,	Chase, 1962, 3/4" pipe in gravel
A.W. Oak 10" N	1973	rd. 3" under surface
70° E 15 lks.	Mon. Box	18" W. Oak N 15° E 29.50'
A.W. Oak 7" S	NW cor. of hse.	6" Willow N 45° W 38.18'
80° W 30 lks.	N 2° W 58.58'	SW cor. hse. fnd. N 30° W 65.22'
Sylvester Sibley, 12" Chinese Elm	N 2° E 65.35'	9" Walnut S 60° E 70.35'
D.S., 1831	30" Oak N 45° W 66.65'	20" W. Oak N 33° E 32.95'
	12" Walnut S 60° W 59.3'	U. Pole #57 S 15° E 45.38'

Description of corner evidence found and/or method applied in restoring or reestablishing corner:

G-6 Found 3/4" pipe in Mon. Box, 3'± S of C/L bit.	
SE cor. of hse. N 10° W 58.58'	
12" Chinese Elm N 2° E 65.35'±	SW cor. hse. fnd. N 30° W 65.22'
30" Oak N 45° W 66.65'±	
12" Walnut S 60° W 59.3'	

And is accepted as a careful and faithful perpetuation of the position of the original corner.

ACT 345 BARRY COUNTY REMONUMENTATION  
APPROVED BY PEER REVIEW AT A MEETING HELD ON

4 Oct '94  
BRIAN REYNOLDS

BR  
COUNTY SURVEYOR

Description of monument for corner and accessories established to perpetuate locating the position of the corner:

G-6 Replaced 3/4" pipe with Std. Barry Co. Mon. (3/4" x 24" Pin with Alum. Cap)  
SE cor. of hse. N 10° W 58.58'  
SW cor. of hse. N 30° W 65.22'  
Nail & Barry Co. Remon. Tag in E side 6" & 8" Elm N 35° E 34.02'  
Nail & Barry Co. Remon. Tag in E side 18" Elm S 5° W 30.22'  
Nail & Barry Co. Remon. Tag in NW side 24" Walnut S 70° W 59.41'  
C/L bit. E-W, North 3'±, on tree line S, tree line N, East 6'±

Surveyed by John C. Bueche  
Surveyor's Michigan License No. 13027

Date 10-26-94

