

OCT 27 1994

COMMISSION

Barry County Remonumentation  
LAND CORNER RECORDATION CERTIFICATE  
Filing Requirement of Act 74, Mich. P.A. 1970

STATE OF MICHIGAN  
COUNTY OF BARRY  
RECEIVED FOR RECORD

OCT 4 12 42 PM '94

Sandy Schondelmar  
REGISTER OF DEEDS

002230

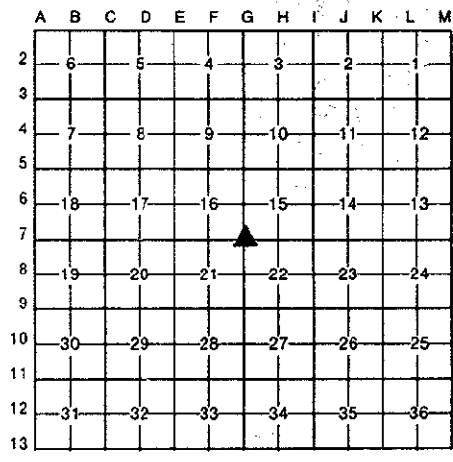
Register of Deeds Stamp & File Number

For corners in

Barry (County)	Located In:	Corner Code #
1. Public Land Survey	T 3N R 9W	G-7 (NW, 22) Rutland Twp.
	T _____ R _____	_____
	T _____ R _____	_____
	T _____ R _____	_____
2. Property Controlling in Section	S _____ T _____ R _____	_____
	S _____ T _____ R _____	_____
3. Miscellaneous Property in Sec.	S _____ T _____ R _____	_____
	S _____ T _____ R _____	_____

4. Lot No. \_\_\_\_\_, Recorded Plat \_\_\_\_\_  
5. Private Claims \_\_\_\_\_

I, John C. Bueche, in a field survey on September, 19 94, do hereby certify that under requirements of P.A. 74, Michigan P.A. of 1970, the corner points mentioned in lines 1 and 2 above were in conformance with regulations and rules therefore as required in the current manual of survey instructions of the United States Department of the Interior, Bureau of Land Management or by a decree of a Court of Law and/or that the corner points mentioned in lines 3, 4 and 5 above were in conformance with the rules of the Michigan Board of Land Surveyors or by a Decree of a Court of Law; established, re-established, monumented, re-monumented, recovered, found as expressed below:



NOTE: Not more than 4 corners, all in the same town and range, may be recorded on this certificate.

A. Description of original monument and accessories and/or subsequent restoration:

G-7 1831 Sylvester Sibley D.S.	LCRC #289, Feb., 1980
A. Boxwood 4" N 73 E 7 Lks	Set 1" iron
A.W. Oak 12 N 87 W 56 Lks	By physical evidence
1877 Bowen	& old survey dist. to W 1/4 post
Found US Post & bearings	Nail in NW root
1903 Heath	20" Oak 70° E 63.00'
US bearing trees set stone 24x16x10	Nail in E side 10" Oak
W Oak 12 N 87 W 56 Lks	N 15° W 44.44'
No date CP 6 found stone	Nail in E root 4" Oak clump
	N 35° E 66.24'

B. Description of corner evidence found and/or method applied in restoring or reestablishing corner:

G-7 Traversed from N 1/4, Sec. 21 to NE, Sec. 22  
Found stone 15" deep, 10" bottom, 6" top & old fence cor. E 25'± of previous recorded cor. NW 22, old fences East, North, South; this fits the 1 1/2 mile dist. very well 2642.91' W to N 1/4 cor., Sec. 21 5287.42' E to NE cor., Sec. 22  
The above LCRC's are therefore not correct

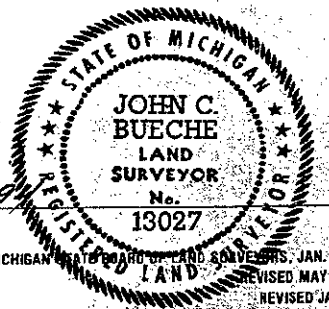
Corner is accepted as a careful and faithful perpetuation of the position of the original corner

ACT 345 BARRY COUNTY REMONUMENTATION  
APPROVED BY PEER REVIEW AT A MEETING HELD ON

SEPT 12, 1994 BR

C. Description of monument for corner and accessories established to perpetuate location and position of the corner:

G-7 Replaced stone with Barry Co. Mon. 3/4" rod & cap  
Nail & Barry Co. Remon. Tag in E side 14" Oak N 40° W 54.40'  
Nail & Barry Co. Remon. Tag in E side 4-12" Oak N 25° E 53.66'  
Nail & Barry Co. Remon. Tag in W side 30" Oak N 05° E 59.74'  
Nail & Barry Co. Remon. Tag in W side 8" Ash S 30° W 69.93'  
Pole tag in W side PP #906 E 138'±  
W edge wood W .45'±  
C/L power line South 2.5'



Signed by John C. Bueche  
John C. Bueche  
Surveyor's Michigan License No. 13027

Date Sept 12, 1994