

OCT 27 1994

COMMISSION

Barry County Remonumentation  
LAND CORNER RECORDATION CERTIFICATE  
Filing Requirement of Act 74, Mich. P.A. 1970

STATE OF MICHIGAN  
COUNTY OF BARRY  
RECEIVED FOR RECORD

OCT 4 12 42 PM '94

Sandy Schondelmarzen  
REGISTER OF DEEDS

002231

Register of Deeds Stamp & File Number

For corners in  
Barry  
(County)

Located In:

Corner Code #

1. Public Land Survey	T	3N	R	9W	H-7(N $\frac{1}{4}$ , 22)
	T		R		Rutland Twp.
	T		R		
	T		R		
2. Property Controlling in Section	S		T	R	
	S		T	R	
3. Miscellaneous Property in Sec.	S		T	R	
	S		T	R	

- 4. Lot No. \_\_\_\_\_, Recorded Plat \_\_\_\_\_
- 5. Private Claims \_\_\_\_\_

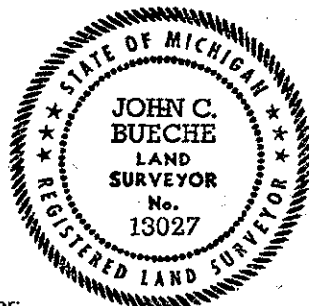
I, John C. Bueche, in a field survey on September, 19 94, do hereby certify that under requirements of P.A. 74, Michigan P.A. of 1970, the corner points mentioned in lines 1 and 2 above were in conformance with regulations and rules therefore as required in the current manual of survey instructions of the United States Department of the Interior, Bureau of Land Management or by a decree of a Court of Law and/or that the corner points mentioned in lines 3, 4 and 5 above were in conformance with the rules of the Michigan Board of Land Surveyors or by a Decree of a Court of Law; established, re-established, monumented, re-monumented, recovered, found as expressed below:

**NOTE: Not more than 4 corners, all in the same town and range, may be recorded on this certificate.**

A. Description of original monument and accessories and/or subsequent restoration:

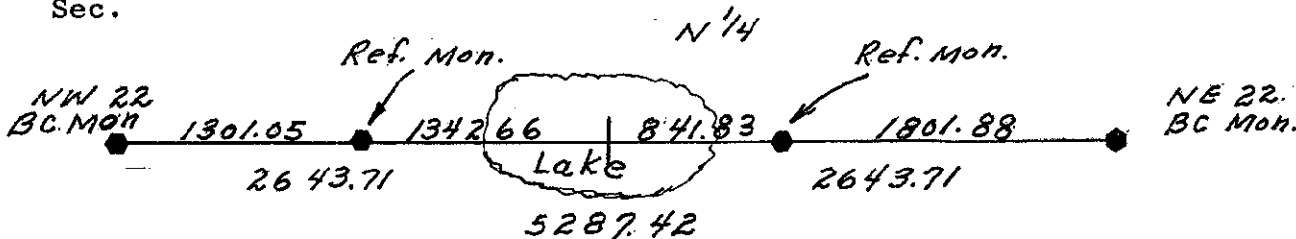
Not set by GLO in Lake

ACT 345 BARRY COUNTY REMONUMENTATION  
APPROVED BY PEER REVIEW AT A MEETING HELD ON  
SEPT 12, 1994 BR  
BRIAN REYNOLDS COUNTY SURVEYOR



B. Description of corner evidence found and/or method applied in restoring or reestablishing corner:

Set Ref. Mons. at 1342.66' W of N 1/4 cor., Sec. 22 on N line of Sec. on W side of lake and 841.83' E of N 1/4 cor., Sec. 22 on N line of Sec.



C. Description of monument for corner and accessories established to perpetuate locating the position of the corner:

- Ref. Mon. 841.83' E of C 1/4; Barry Co. Mon. 3/4" rod with cap
- Nail & Barry Co. Remon. Tag in S side PP #919 East 59.05'
- Nail & Barry Co. Remon. Tag in N side 8" Cedar S 65° E 92.20'
- Nail & Barry Co. Remon. Tag in W side 8" Apple S 05° E 23.76'
- Nail & Barry Co. Remon. Tag in NW side 10" Oak S 55° W 51.45'
- C/L Power line E-W, South 1'±
- Ref. Mon. 1342.66' W of C 1/4; Barry County Mon. 3/4" rod & cap
- Nail & Barry County Remon. Tag in W side PP #910 S 0° E 44.25'
- Nail & Barry County Remon. Tag in N side 10" Cedar S 60° W 21.50'
- Nail & Barry County Remon. Tag in N side 8' Ash N 90° E 8.60'
- Nail & Barry County Remon. Tag in E side 12" Ash N 15° E 23.15'
- In old fence E-W

Signed by John C. Bueche  
John C. Bueche  
Surveyor's Michigan License No. 13027

Date Sept 12, 1994