

SURVEY & REMONUMENTATION
AUG 22 1995
COMMISSION

BARRY COUNTY REMONUMENTATION

STATE OF MICHIGAN
 COUNTY OF BARRY
 RECEIVED FOR RECORD

MAR 20 10 55 AM '95

Sandy Schindelmarper
 REGISTER OF DEEDS

LAND CORNER RECORDATION CERTIFICATE
 Filing Requirement of Act 74, Mich. P.A. 1970

For corners in
BARRY

(County)

Located In: Corner Code #

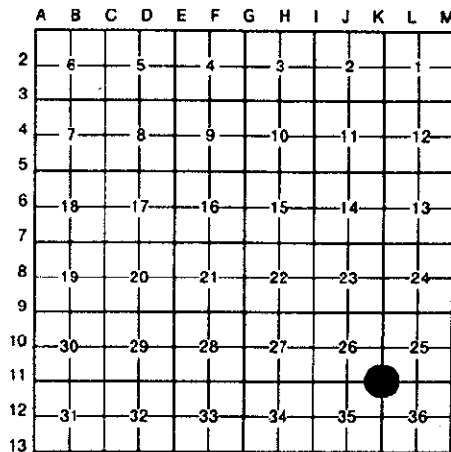
- 1. Public Land Survey
CORNER COMMON TO SECTIONS 25, 26, 35, & 36 RUTLAND TOWNSHIP
- 2. Property Controlling in Section
- 3. Miscellaneous Property in Sec.

T	<u>3N</u>	R	<u>9W</u>	<u>K-11</u>
T	_____	R	_____	_____
T	_____	R	_____	_____
T	_____	R	_____	_____
S	_____	T	_____	_____
S	_____	T	_____	_____
S	_____	T	_____	_____
S	_____	T	_____	_____

002282

Register of Deeds Stamp & File Number

- 4. Lot No. _____, Recorded Plat _____
- 5. Private Claims _____



I, **BRIAN REYNOLDS**, in a field survey on **2 MARCH**, 19 **1995**, do hereby certify that under requirements of P.A. 74, Michigan P.A. of 1970, the corner points mentioned in lines 1 and 2 above were in conformance with regulations and rules therefore as required in the current manual of survey instructions of the United States Department of the Interior, Bureau of Land Management or by a decree of a Court of Law and/or that the corner points mentioned in lines 3, 4 and 5 above were in conformance with the rules of the Michigan Board of Land Surveyors or by a Decree of a Court of Law; established, re-established, monumented, re-monumented, recovered, found as expressed below:

NOTE: Not more than 4 corners, all in the same town and range, may be recorded on this certificate.

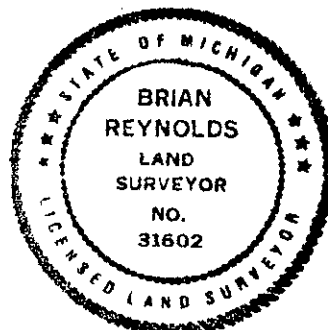
A. Description of original monument and accessories and/or subsequent restoration:

GENERAL LAND OFFICE: SYLVESTER SIBLEY, D.S. 1831, (R9W,P.117) A. SUGAR 8 N41 1/2W 31 AN IRONWOOD 6 S.27E 70
COUNTY SURVEYOR RECORDS: BOWEN 27 & 28 FEB 1877, (L.1, P.186) "FOUND ONE U.S. BEARING AND OLD STAKE HOLE" W. OAK 8 N27E 24 Do. 8 N87 1/2 W 15
ALSO: A.D. RORK, FEB 26 1866 (L.2,P.72), "BEARINGS FOUND"
ALSO: A.N. BATEMAN, OCT 5 1901, (L.3,P.52) "STAKE 2 WITNESS TREES STANDING & RECORDED IN OLD COUNTY RECORD BOOK
ALSO: LEE COBB, AUG 12 & 13, 1890 (LEE COBB BOOK IX,P.104), "IDENTIFIED BY STAKE ORIGINAL BEARING ORIG: SUGAR 8 N41 1/2W 31 & BEARING BY BOWEN"
LAND CORNER RECORDATION CERTIFICATE: #415, BY BRIAN REYNOLDS, P.S.#31602, "ALL LOCAL EVIDENCE OF CORNER WAS OBLITERATED WHEN QUIMBY ROAD WAS REROUTED SEVERAL YEARS AGO. GRADE AT CORNER WAS CUT BY SEVERAL FEET. RESET CORNER AT THE POINT THAT BEST HARMONIZES OCCUPATION WITH THE SURVEYS CITED ABOVE." RAILROAD SPIKE, 10" OAK N70°E 63.71' 30" OAK N15°E 35.30' TELE. RISER S70°E 60.98'

B. Description of corner evidence found and/or method applied in restoring or reestablishing corner:

FOUND RAILROAD SPIKE AS RECORDED BY REYNOLDS. CONFIRMED WITNESSES BY REYNOLDS ie. 10" OAK N70°E 63.71' (BENT) 30" OAK N15°E 35.30' TELE. RISER S70°E 60.98'
REPLACED RAILROAD SPIKE WITH STANDARD BARRY COUNTY REMONUMENTATION MONUMENT.

ACT 345 BARRY COUNTY REMONUMENTATION
 APPROVED BY PEER REVIEW AT A MEETING HELD ON
7 June '94
 BRIAN REYNOLDS COUNTY SURVEYOR



C. Description of monument for corner and accessories established to perpetuate locating the position of the corner:

SET STANDARD BARRY COUNTY REMONUMENTATION MONUMENT (3/4"X36"W/ALUMINUM CAP)
FOUND NAIL IN THE WEST SIDE OF A 30" OAK N15°E 35.30'
TOP CENTER OF A TELEPHONE RISER S70°E 60.77'
SET 40d NAIL W/REMON TAG IN THE NORTHWEST SIDE OF A 12" OAK N70°E 63.59'
SET 40d NAIL W/PLACTIC TAG IN THE NORTH SIDE OF A 10" OAK S30°E 72.81'
SET 40d NAIL W/PLACTIC TAG IN THE NORTHWEST SIDE OF A 12" OAK N45°E 59.17'
SET 40d NAIL W/PLASTIC TAG IN THE EAST SIDE OF AN 8" OAK S25°W 62.50'
4.5'+/- SOUTH OF THE CENTERLINE OF AN EAST-WEST GRAVEL ROAD
10'+/- WEST OF THE CENTERLINE OF GRAVEL ROAD SOUTH

Signed by Brian Reynolds Date MARCH 17, 1995
 Surveyor's Michigan License No. 31602