

OCT 27 1994

COMMISSIONER

BARRY COUNTY REMONUMENTATION
LAND CORNER RECORDATION CERTIFICATE
Filing Requirement of Act 74, Mich. P.A. 1970

STATE OF MICHIGAN
COUNTY OF BARRY
RECEIVED FOR RECORD

SEP 26 11 21 AM '94

Sandy Schondelmarer
REGISTER OF DEEDS

For corners in
BARRY
(County)

Located In: Corner Code #

1. Public Land Survey	T <u>4N</u> R <u>8W</u>	<u>A-7</u>
CARLTON TOWNSHIP	T _____ R _____	_____
SW COR SECTION 18	T _____ R _____	_____
NW COR SECTION 19	T _____ R _____	_____
2. Property Controlling	S _____ T _____ R _____	_____
in Section	S _____ T _____ R _____	_____
3. Miscellaneous	S _____ T _____ R _____	_____
Property in Sec.	S _____ T _____ R _____	_____

002217

Register of Deeds Stamp & File Number

- 4. Lot No. _____, Recorded Plat _____
- 5. Private Claims _____

	A	B	C	D	E	F	G	H	I	J	K	L	M
2	6	5	4	3	2	1							
3													
4	7	8	9	10	11	12							
5													
6	18	17	16	15	14	13							
7													
8	19	20	21	22	23	24							
9													
10	30	29	28	27	26	25							
11													
12	31	32	33	34	35	36							
13													

I, **BRIAN REYNOLDS**, in a field survey on **12 JULY**, 19 **94**

do hereby certify that under requirements of P.A. 74, Michigan P.A. of 1970, the corner points mentioned in lines 1 and 2 above were in conformance with regulations and rules therefore as required in the current manual of survey instructions of the United States Department of the Interior, Bureau of Land Management or by a decree of a Court of Law and/or that the corner points mentioned in lines 3, 4 and 5 above were in conformance with the rules of the Michigan Board of Land Surveyors or by a Decree of a Court of Law, established, re-established, monumented, re-monumented, recovered, found as expressed below:

NOTE: Not more than 4 corners, all in the same town and range, may be recorded on this certificate.

A. Description of original monument and accessories and/or subsequent restoration:

- 1. **GENERAL LAND OFFICE: DEPUTY SURVEYOR SYLVESTER SIBLEY, 1830.**
"WEST 77.78 WEST BOUNDARY 42 LINKS NORTH OF POST".
A. TAMARACK 12 S48E 7
Do. 10 N19E 35

APPROVED BY PEER REVIEW AT A MEETING HELD ON
2 Aug. 94
BRIAN REYNOLDS COUNTY SURVEYOR

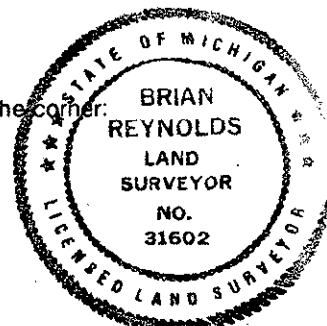
- 2. **NO OTHER HISTORICAL DATA OF RECORD COULD BE FOUND FOR THIS CORNER. PRIVATE NOTES OF BURT WICKHAM, P.S. #17639, c. 1992, INDICATE A FENCE RUNNING EAST FROM APPROXIMATE CORNER, NO MONUMENT FOUND OR SET.**

B. Description of corner evidence found and/or method applied in restoring or reestablishing corner:

IT APPEARS THAT THE DISTANCE DATA RECITED IN THE GENERAL LAND OFFICE NOTES ARE GROSSLY IN ERROR. AS TO BOTH THE CLOSING DISTANCE AND THE FALLING BETWEEN STANDARD AND CLOSING CORNERS (CLOSING 1/2 MILE 2493.48' GLO, 2453.27' MEASURED; FALLING 27.72' GLO, 115.69' MEAS.). PROJECTED LINE FROM C-7 THROUGH B-7 TO INTERSECT RANGE LINE DEFINED BY M-7 AND M-6, T4N R9W. POINT THUS DETERMINED FITS WELL WITH DISTANCE FROM NOTES PROVIDED BY WICKHAM FOR DISTANCE TO A-6, (2635.78' BY WICKHAM, 2635.79' MEASURED) AND WITH FENCE EAST. SEARCHED FOR MONUMENTATION AND FOUND NOTHING. ACCEPTED POSITION THUS DETERMINED AS THE POSITION THAT SHOULD HAVE BEEN, BUT PROBABLY WAS NOT, SET BY SIBLEY. THE EXISTENCE OF THE FENCE EAST INDICATES THAT THE CORNER PROBABLY WAS SET IN A SURVEY (NOT OF RECORD) MANY YEARS AGO.

C. Description of monument for corner and accessories established to perpetuate locating the position of the corner:

- SET STANDARD BARRY COUNTY REMONUMENTATION IRON (3/4"X36"W/ALUMINUM CAP)**
- SET 40d NAIL W/REMON TAG IN NE SIDE OF A 12" MAPLE S30E 3.15'**
- SET 40d NAIL W/REMON TAG IN SW SIDE OF A 14" MAPLE N22W 26.56'**
- SET 40d NAIL W/REMON TAG IN EAST SIDE OF A 4" QUAD MAPLE DUE NORTH 18.50'**
- SET 40d NAIL W/REMON TAG IN N SIDE OF A 12" TWIN MAPLE N45E 34.87'**
- IRON LIES 1.5' WEST OF A N-S FENCE, ON THE WEST SIDE OF AN ABANDONED RAILROAD BED AT THE OUTER EDGE OF THE GRADE.**



Signed by Brian Reynolds
Surveyor's Michigan License No. 31602

Date SEPT 23, 1994