

SURVEY & REMONUMENTATION

BARRY COUNTY REMONUMENTATION

STATE OF MICHIGAN COUNTY OF BARRY RECEIVED FOR RECORD

AUG 22 1995

LAND CORNER RECORDATION CERTIFICATE Filing Requirement of Act 74, Mich. P.A. 1970

MAR 20 10 55 AM '95

COMMISSION For corners in BARRY (County)

Sandy Schondelmarer REGISTER OF DEEDS

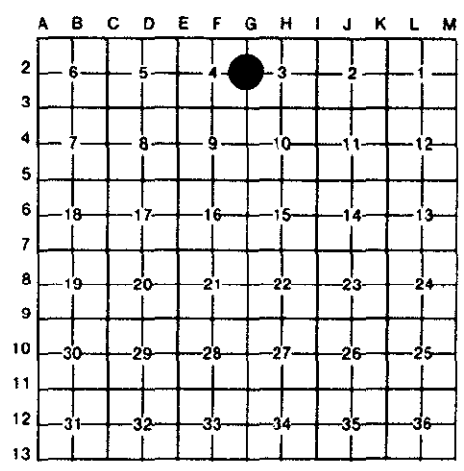
- 1. Public Land Survey 1/4 CORNER COMMON TO SECTIONS 3 & 4 CARLTON TOWNSHIP
2. Property Controlling in Section
3. Miscellaneous Property in Sec.

Table with columns: Located In: (T, R), Corner Code # (G-2)

002286

Register of Deeds Stamp & File Number

- 4. Lot No.
5. Private Claims



BRIAN REYNOLDS in a field survey on 15 APRIL 1994 do hereby certify that under requirements of P.A. 74, Michigan P.A. of 1970, the corner points mentioned in lines 1 and 2 above were in conformance with regulations and rules therefore as required in the current manual of survey instructions of the United States Department of the Interior, Bureau of Land Management or by a decree of a Court of Law and/or that the corner points mentioned in lines 3, 4 and 5 above were in conformance with the rules of the Michigan Board of Land Surveyors or by a Decree of a Court of Law; established, re-established, monumented, re-monumented, recovered, found as expressed below:

NOTE: Not more than 4 corners, all in the same town and range, may be recorded on this certificate.

A. Description of original monument and accessories and/or subsequent restoration:

- 1 GENERAL LAND OFFICE: SYLVESTER SIBLEY, D.S., 1830 (R8W,P.157) NORTH BOUNDARY 84 LKS. EAST OF POST. POST SET IN MARSH. BEECH 9 S50E 33 W. ASH 34 N29W 20
2 COUNTY SURVEYOR RECORDS: BOWEN, 1875 (CARLTON F.B.,P.70) "STONE" ALSO: BOWEN, NOV. 1875 (L.1, P.114) "FOUND BEARING SET STONE AND CROCKERY" ALSO: A.W. BATEMAN, 10 JULY, 1900 (L.3, P.34), "IRON, STAKE, & LIGHT COLORED STONE" 8" APPLE N641/2W 41 FEET 10" IRONWOOD S71W 39 FEET
3 COUNTY ROAD COMMISSION: "IRON & CROCKERY" 12" ELM N40E 46.1' 8" ASH WEST 41.5' CORNER IRON POST N88E 27.7'
4 NO OTHER RECORDED HISTORICAL INFORMATION AVAILABLE FOR THIS CORNER

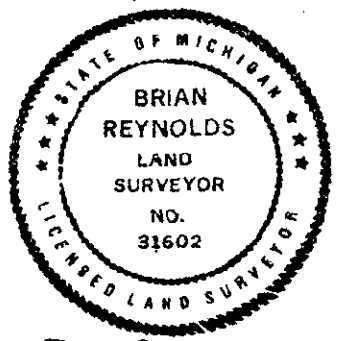
B. Description of corner evidence found and/or method applied in restoring or reestablishing corner:

FOUND ASH WITNESS AND IRON FENCE POST RECITED IN ROAD COMMISSION WITNESSES. EXCAVATED 2' X 2' AREA BELOW BITUMINOUS. FOUND NO EVIDENCE. SET STANDARD BARRY COUNTY REMONUMENTATION MONUMENT IN REFERENCE TO WITNESSES, AND INSTALLED MONUMENT BOX.

ACT 345 BARRY COUNTY REMONUMENTATION APPROVED BY PEER REVIEW AT A MEETING HELD ON 3 May 96 BRIAN REYNOLDS COUNTY SURVEYOR

C. Description of monument for corner and accessories established to perpetuate locating the position of the corner:

- SET STANDARD BARRY COUNTY REMONUMENTATION MONUMENT (3/4"X36"W/ALUMINUM CAP) IN MONUMENT BOX
SET 40d NAIL W/REMON TAG IN THE SOUTHEAST SIDE OF A 12" ELM N50°E 42.11'
SET 40d NAIL W/REMON TAG IN THE NORTH SIDE OF A 9" ELM N88°E 55.42'
SET 40d NAIL W/REMON TAG IN THE SOUTH SIDE OF A 32" ASH S88°W 42.09'
SET 40d NAIL W/REMON TAG IN THE SOUTHEAST SIDE OF A 36" BEECH S34°W 63.31'
WEST FACE OF AN ANGLE IRON FENCE POST IN CONCRETE N86°E 27.70'
NORTHEAST CORNER OF A BRICK HOUSE N53°W 246.68'



Signed by [Signature] Date MARCH 17, 1995 Surveyor's Michigan License No. 31602