

SURVEY & REMONUMENTATION

AUG 22 1995

COMMISSION

BARRY COUNTY REMONUMENTATION

LAND CORNER RECORDATION CERTIFICATE
Filing Requirement of Act 74, Mich. P.A. 1970

STATE OF MICHIGAN
COUNTY OF BARRY
RECEIVED FOR RECORD

MAR 20 10 55 AM '95

Sandy Schindelmarper
REGISTER OF DEEDS

For corners in

BARRY
(County)

Located In:

Corner Code #

1. Public Land Survey	T	<u>4N</u>	<u>R8W</u>	<u>G-3</u>
CORNER COMMON TO SECTIONS 3,4,9,&10 CARLTON TOWNSHIP	T	_____	R _____	_____
2. Property Controlling in Section	S	_____	T _____	R _____
3. Miscellaneous Property in Sec.	S	_____	T _____	R _____

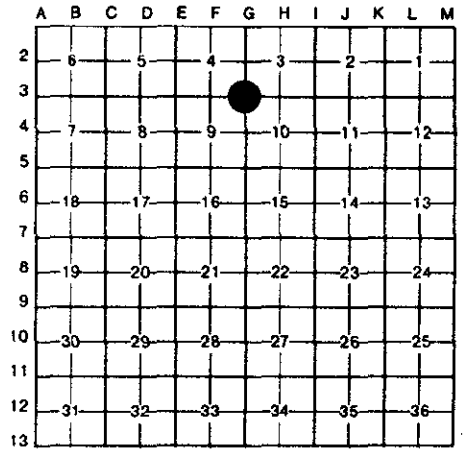
002287

Register of Deeds Stamp & File Number

4. Lot No. _____, Recorded Plat _____
5. Private Claims _____

I, BRIAN REYNOLDS in a field survey on 15 APRIL, 1994, do hereby certify that under requirements of P.A. 74, Michigan P.A. of 1970, the corner points mentioned in lines 1 and 2 above were in conformance with regulations and rules therefore as required in the current manual of survey instructions of the United States Department of the Interior, Bureau of Land Management or by a decree of a Court of Law and/or that the corner points mentioned in lines 3, 4 and 5 above were in conformance with the rules of the Michigan Board of Land Surveyors or by a Decree of a Court of Law; established, re-established, monumented, re-monumented, recovered, found as expressed below:

NOTE: Not more than 4 corners, all in the same town and range, may be recorded on this certificate.



A. Description of original monument and accessories and/or subsequent restoration:

GENERAL LAND OFFICE: SYLVESTER SIBLEY, D.S., 1830(R8W,P.156) "IRON WOOD 6" DIA"
COUNTY SURVEYOR RECORDS: BOWEN, 1875(L.1,P.115) "STONE FOR CORNER"
COUNTY ROAD COMMISSION: "BRIDGE SPIKE" 18" MAPLE N45E 60.5' USGS MON. S75W 94.3'
18" ELM S30W 74.1' TOP COR. IRON POST NW 44.1'
CONSUMERS POWER COMPANY: FIELD BOOK 818, "3/4" PIPE AT INTERSECTION OF CENTERLINES
USBORNE & BROWN ROADS"
NO OTHER RECORDED HISTORICAL INFORMATION AVAILABLE FOR THIS CORNER.

B. Description of corner evidence found and/or method applied in restoring or reestablishing corner:

FOUND 3/4" PINCH PIPE AT INTERSECTION OF BROWN AND USBORNE ROADS. ALSO FOUND TWO ROAD COMMISSION WITNESSES; i.e. USGS MON. S75W 94.3' 18" MAPLE N45E 60.5' THE ABOVE TWO WITNESSES ARE NOT CONSISTENT ONE WITH THE OTHER. THE REFERENCE TO THE 18" MAPLE FIT VERY WELL WITH THE FOUND PIPE, HOWEVER THE REFERENCE TO THE USGS MONUMENT MEASURED 5.48' LONG. DISTANCES FROM THESE TWO POINTS DO NOT MEET ANYWHERE. FOUND NAIL IN THE SOUTH SIDE OF A 16" OAK N68°W 84.58' THIS REFERENCE WAS NOT FOUND IN ANY RECORDS.
ACCEPTED FOUND 3/4" PINCH PIPE AS PERPETUATION OF CORNER POSITION.
REPLACED 3/4" PINCH PIPE WITH STANDARD BARRY COUNTY REMONUMENTATION MONUMENT AND INSTALLED MONUMENT BOX.

ACT 345 BARRY COUNTY REMONUMENTATION
APPROVED BY PEER REVIEW AT A MEETING HELD ON

3 May '94

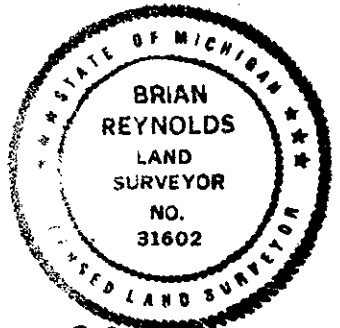
BR

BRIAN REYNOLDS

COUNTY SURVEYOR

C. Description of monument for corner and accessories established to perpetuate locating the position of the corner:

SET STANDARD BARRY COUNTY REMONUMENTATION MONUMENT (3/4"X36"W/ALUMINUM CAP) IN MONUMENT BOX.
SET P.K. NAIL W/PLASTIC TAG IN THE SOUTH SIDE OF A UTILITY POLE N70°E 82.78'
FOUND NAIL IN THE SOUTH SIDE OF A 16" OAK N68°W 84.58'
TOP CENTER OF A USGS MONUMENT S71°W 99.78'
TOP CENTER OF THE SOUTH END OF A 14" CMP S50°W 68.86'
FOUND NAIL IN THE SOUTHEAST SIDE OF A 27" MAPLE N55°E 60.21'
TOP CENTER OF A TELEPHONE RISER N54°W 52.06'
CORNER LIES 1'+/- EAST OF THE CENTERLINE OF NORTH-SOUTH BITUMINOUS ROAD ON CENTERLINE OF EAST-WEST BITUMINOUS ROAD



Signed by [Signature]

Date MARCH 17, 1995

Surveyor's Michigan License No. 31602