

SURVEY & REMONUMENTATION
 AUG 22 1995
 COMMISSION

BARRY COUNTY REMONUMENTATION

STATE OF MICHIGAN
 COUNTY OF BARRY
 RECEIVED FOR RECORD

LAND CORNER RECORDATION CERTIFICATE
 Filing Requirement of Act 74, Mich. P.A. 1970

MAR 20 10 55 AM '95

Sandy Schendelmayer
 REGISTER OF DEEDS

For corners in
BARRY
 (County)

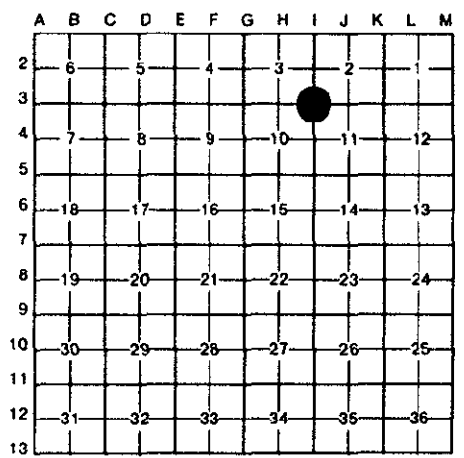
Located In:	Corner Code #
T <u>4N</u> R <u>8W</u>	<u>I-3</u>
T _____ R _____	_____
T _____ R _____	_____
T _____ R _____	_____
T _____ R _____	_____
S _____ T _____ R _____	_____
S _____ T _____ R _____	_____
S _____ T _____ R _____	_____
S _____ T _____ R _____	_____

002291

Register of Deeds Stamp & File Number

- Public Land Survey
CORNER COMMON TO SECTIONS 2,3,10, & 11 CARLTON TOWNSHIP
- Property Controlling in Section
- Miscellaneous Property in Sec.

- Lot No. _____, Recorded Plat _____
- Private Claims _____



I, **BRIAN REYNOLDS**, in a field survey on **15 APRIL**, 19 **1994**, do hereby certify that under requirements of P.A. 74, Michigan P.A. of 1970, the corner points mentioned in lines 1 and 2 above were in conformance with regulations and rules therefore as required in the current manual of survey instructions of the United States Department of the Interior, Bureau of Land Management or by a decree of a Court of Law and/or that the corner points mentioned in lines 3, 4 and 5 above were in conformance with the rules of the Michigan Board of Land Surveyors or by a Decree of a Court of Law; established, re-established, monumented, re-monumented, recovered, found as expressed below:

NOTE: Not more than 4 corners, all in the same town and range, may be recorded on this certificate.

- A. Description of original monument and accessories and/or subsequent restoration:
- GENERAL LAND OFFICE: SYLVESTER SIBLEY, D.S., 1830 (R8W, PG.152) ELM 26 S17W 31 BEECH 8 N73E 29**
 - LAND CORNER RECORDATION CERTIFICATE: #337 BY ROBERT R. CARR, P.S.#20704, 10 NOV. 1981, "FOUND IRON" 4'+/- SOUTH OF CENTERLINE BROWN ROAD ANGLE IRON FENCE CORNER SOUTH 29.20' 12" WALNUT S75W 102.67 TELEPHONE RISER N80E 156.62'**
 - NO OTHER RECORDED HISTORICAL INFORMATION AVAILABLE FOR THIS CORNER**

B. Description of corner evidence found and/or method applied in restoring or reestablishing corner:

FOUND AND ACCEPTED IRON AS RECORDED BY CARR. POSITION IS CONSISTENT WITH OCCUPATION LINES IN SECTION 2 AND 3. REPLACED IRON WITH STANDARD BARRY COUNTY REMONUMENTATION MONUMENT AND INSTALLED MONUMENT BOX.

ACT 345 BARRY COUNTY REMONUMENTATION
 APPROVED BY PEER REVIEW AT A MEETING HELD ON
3 Mar '94 BR
 BRIAN REYNOLDS COUNTY SURVEYOR



C. Description of monument for corner and accessories established to perpetuate locating the position of the corner.

- SET STANDARD BARRY COUNTY REMONUMENTATION MONUMENT (3/4"X36"W/ALUMINUM CAP) IN MONUMENT BOX**
- SET 40d NAIL W/REMON TAG IN THE NORTHEAST SIDE OF A LIGHT POLE S55°E 105.99'
 - SET P.K. NAIL W/REMON TAG IN THE NORTH SIDE OF A UTILITY POLE N80°E 156.65'
 - SET P.K. NAIL W/REMON TAG IN THE SOUTHEAST SIDE OF A 28" OAK N50°E 85.13'
 - SET P.K. NAIL W/REMON TAG IN THE NORTHWEST SIDE OF AN 18" OAK S73°W 102.16'
 - NORTH FACE OF AN ANGLE IRON CORNER POST IN CONCRETE S3°E 29.15'
 - 4.5'+/- SOUTH OF EAST-WEST CENTERLINE

Signed by [Signature]
 Surveyor's Michigan License No. 31602

Date MARCH 17, 1995