

SURVEY & REMONUMENTATION

NOV 04 1996

COMMISSION

BARRY COUNTY REMONUMENTATION

LAND CORNER RECORDATION CERTIFICATE
Filing Requirement of Act 74, Mich. P.A. 1970

STATE OF MICHIGAN
COUNTY OF BARRY
RECEIVED FOR RECORD

AUG 20 11 27 AM '96

Sandy Schondelmayer

REGISTER OF DEEDS

002383

Register of Deeds Stamp & File Number

For corners in

BARRY

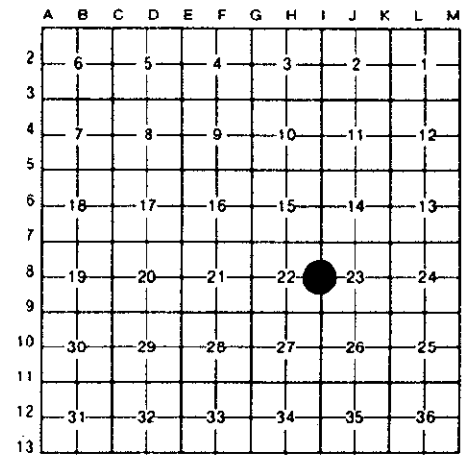
(County)

Located In:

Corner Code #

1. Public Land Survey	T	<u>4N</u>	R	<u>8W</u>	<u>1-8</u>
1/4 CORNER COMMON TO SECTIONS 22 & 23 CARLTON TOWNSHIP	T	_____	R	_____	_____
	T	_____	R	_____	_____
	T	_____	R	_____	_____
2. Property Controlling in Section	S	_____	T	_____	R
	S	_____	T	_____	R
3. Miscellaneous Property in Sec.	S	_____	T	_____	R
	S	_____	T	_____	R

4. Lot No. _____, Recorded Plat _____
5. Private Claims _____



I, **BRIAN REYNOLDS**, in a field survey on **13 FEBRUARY**, 19**95**

do hereby certify that under requirements of P.A. 74, Michigan P.A. of 1970, the corner points mentioned in lines 1 and 2 above were in conformance with regulations and rules therefore as required in the current manual of survey instructions of the United States Department of the Interior, Bureau of Land Management or by a decree of a Court of Law and/or that the corner points mentioned in lines 3, 4 and 5 above were in conformance with the rules of the Michigan Board of Land Surveyors or by a Decree of a Court of Law; established, re-established, monumented, re-monumented, recovered, found as expressed below:

NOTE: Not more than 4 corners, all in the same town and range, may be recorded on this certificate.

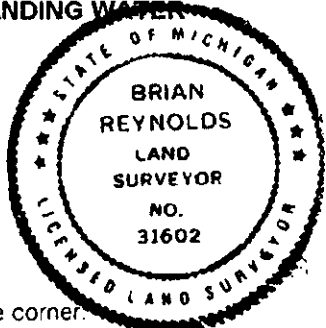
A. Description of original monument and accessories and/or subsequent restoration:

GENERAL LAND OFFICE: SYLVESTER SIBLEY, D.S., 1830(R8W,P.150)
A. TAMERACK 4. EAST 4LKS Do. 10 N.12W. 19

NO OTHER RECORDED HISTORICAL INFORMATION AVAILABLE FOR THIS CORNER.

B. Description of corner evidence found and/or method applied in restoring or reestablishing corner:

FOUND 2" X 5' IRON AXLE SHAFT LYING NEARLY HORIZONTAL IN ABOUT 18" OF STANDING WATER. OLD WOVEN WIRE FENCE TO WEST. NO OBVIOUS OCCUPATION NORTH OR SOUTH. SET FOUND AXLE SHAFT UPRIGHT AT POINT IT HAD APPARENTLY PREVIOUSLY OCCUPIED. AFTER COMPLETING SECTION MEASUREMENTS, ACCEPTED POSITION OF FOUND AXLE SHAFT AS A PERPETUATION OF THE CORNER POSITION, NOT OF RECORD. LEFT ABOUT 6" OF SHAFT EXPOSED ABOVE SURFACE OF STANDING WATER.



C. Description of monument for corner and accessories established to perpetuate locating the position of the corner:

**DID NOT SET STANDARD BARRY COUNTY REMON MONUMENT, LEFT 2"X5' AXLE SHAFT IN PLACE
SET 40d NAIL W/PLASTIC CAP IN THE NORTH SIDE OF A 22" MAPLE S85°W 56.04'
SET 40d NAIL W/PLASTIC CAP IN THE NORTHWEST SIDE N.W. TRUNK OF AN 8" TWIN BEECH N35°E 32.52'
SET 40d NAIL W/PLASTIC CAP IN THE NORTHEAST SIDE OF A 16" OAK S70°W 57.18'
SET 40d NAIL W/PLASTIC CAP IN THE SOUTHEAST SIDE OF A 14" BEECH S50°W 32.05'**

ACT 345 BARRY COUNTY REMONUMENTATION
APPROVED BY PEER REVIEW AT A MEETING HELD ON

FEB 13 1995 BR
BRIAN REYNOLDS COUNTY SURVEYOR

Signed by [Signature]
Surveyor's Michigan License No. 31602

Date AUGUST 16, 1996