

SURVEY & REMONUMENTATION

JUL 24 1997

COMMISSION

BARRY COUNTY REMONUMENTATION

LAND CORNER RECORDATION CERTIFICATE

Filing Requirement of Act 74, Mich. P.A. 1970

STATE OF MICHIGAN
 COUNTY OF BARRY
 REC'D

MAR 5 9 25 AM '97

Sandy J. ...
 REGISTER OF DEEDS

002473

Register of Deeds Stamp & File Number

For corners in

BARRY
 (County)

Located In:

Corner Code #

1. Public Land Survey
CENTER OF SECTION 23
CARLTON TOWNSHIP

T 4N R 8W J-8

T _____ R _____

T _____ R _____

T _____ R _____

2. Property Controlling
 in Section

S _____ T _____ R _____

S _____ T _____ R _____

3. Miscellaneous
 Property in Sec.

S _____ T _____ R _____

S _____ T _____ R _____

4. Lot No. _____, Recorded Plat _____

5. Private Claims _____

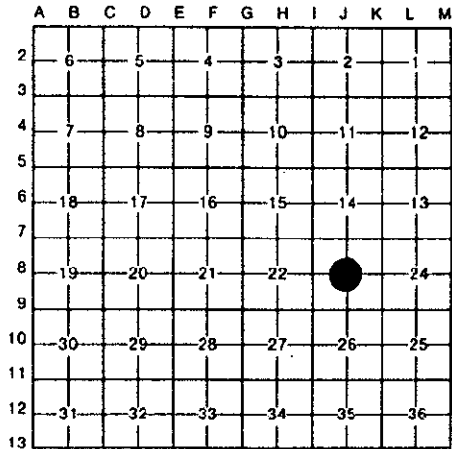
I, **BRIAN REYNOLDS**, in a field survey on **13 FEBRUARY**, 19 **95**, do hereby certify that under requirements of P.A. 74, Michigan P.A. of 1970, the corner points mentioned in lines 1 and 2 above were in conformance with regulations and rules therefore as required in the current manual of survey instructions of the United States Department of the Interior, Bureau of Land Management or by a decree of a Court of Law and/or that the corner points mentioned in lines 3, 4 and 5 above were in conformance with the rules of the Michigan Board of Land Surveyors or by a Decree of a Court of Law; established, re-established, monumented, re-monumented, recovered, found as expressed below:

NOTE: Not more than 4 corners, all in the same town and range, may be recorded on this certificate.

A. Description of original monument and accessories and/or subsequent restoration:

CORNER NOT SET BY GENERAL LAND OFFICE.

NO RECORDED HISTORICAL INFORMATION AVAILABLE FOR THIS CORNER.



B. Description of corner evidence found and/or method applied in restoring or reestablishing corner:

FOUND 5/8" REBAR AT FENCE INTERSECTION, FENCES EAST, WEST, AND SOUTH. RESULTS OF TRAVERSE OF SECTION 23 PROVE FOUND IRON TO BE ON NORTH-SOUTH 1/4 LINE, BUT 6.4 FEET SOUTH OF EAST-WEST 1/4 LINE. ACCEPTED FOUND 5/8" IRON AS ESTABLISHMENT OR PERPETUATION OF CORNER, NOT OF RECORD.

ACT 345 BARRY COUNTY REMONUMENTATION
 APPROVED BY PEER REVIEW AT A MEETING HELD ON
10-14-96
 BRIAN REYNOLDS COUNTY SURVEYOR



C. Description of monument for corner and accessories established to perpetuate locating the position of the corner:

**SET STANDARD BARRY COUNTY REMONUMENTATION MONUMENT (3/4"X36"W/ALUMINUM CAP)
 SET 40d NAIL W/PLASTIC CAP IN THE SOUTHEAST SIDE OF A 7" CHERRY N10°E 2.00'
 SET 40d NAIL W/PLASTIC CAP IN THE SOUTHWEST SIDE EAST TRUNK OF AN 8" TWIN CHERRY N70°W 4.45'
 SET 40d NAIL W/PLASTIC CAP IN THE SOUTH SIDE OF A 20" OAK S85°E 9.84'
 SET 40d NAIL W/PLASTIC CAP IN THE WEST SIDE OF A 16" HICKORY S20°E 32.92'
 SET 40d NAIL W/PLASTIC CAP IN THE SOUTH SIDE EAST TRUNK OF A 12" TWIN CHERRY DUE WEST 19.23'
 IN LINE WITH FENCES TO THE EAST, WEST, & SOUTH**

[Handwritten signature]

FEB 18 1997