

**SURVEY & REMONUMENTATION**

NOV 04 1996

COMMISSION

**BARRY COUNTY REMONUMENTATION**

**LAND CORNER RECORDATION CERTIFICATE**  
Filing Requirement of Act 74, Mich. P.A. 1970

STATE OF MICHIGAN  
COUNTY OF BARRY  
RECEIVED FOR RECORD

AUG 20 11 27 AM '96

Sandy Schendelmayer  
REGISTER OF DEEDS

002382

Register of Deeds Stamp & File Number

For corners in

**BARRY**

(County)

Located In:

Corner Code =#

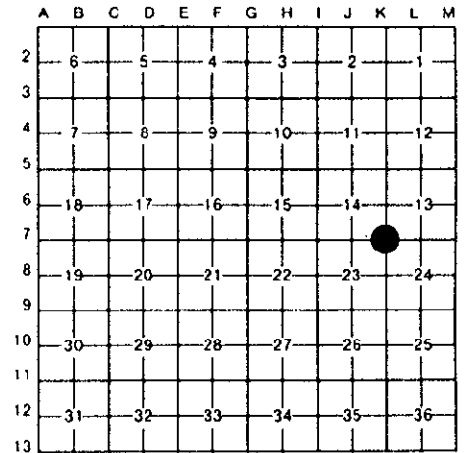
1. Public Land Survey	T	4N	R	8W	K-7
<b>SECTION CORNER COMMON TO SECTIONS 13, 14, 23, &amp; 24</b>	T		R		
<b>CARLTON TOWNSHIP</b>	T		R		
2. Property Controlling in Section	S		T	R	
3. Miscellaneous Property in Sec.	S		T	R	

4. Lot No. \_\_\_\_\_, Recorded Plat \_\_\_\_\_  
5. Private Claims \_\_\_\_\_

I, **BRIAN REYNOLDS**, in a field survey on **13 FEBRUARY**, 19**95**

do hereby certify that under requirements of P.A. 74, Michigan P.A. of 1970, the corner points mentioned in lines 1 and 2 above were in conformance with regulations and rules therefore as required in the current manual of survey instructions of the United States Department of the Interior, Bureau of Land Management or by a decree of a Court of Law and/or that the corner points mentioned in lines 3, 4 and 5 above were in conformance with the rules of the Michigan Board of Land Surveyors or by a Decree of a Court of Law; established, re-established, monumented, re-monumented, recovered, found as expressed below:

**NOTE: Not more than 4 corners, all in the same town and range, may be recorded on this certificate.**



A. Description of original monument and accessories and/or subsequent restoration

**GENERAL LAND OFFICE: SYLVESTER SIBLEY, D.S., 1830(R8W,P.145) A. BEECH 12 S.7E. 62 Do. 26 N.36W. 20**  
**COUNTY SURVEYOR NOTES: S. PRATT, NOV. 22, 1888(L.1,P.332) CHERRY 16 S11 1/4E 2.24 1/2 THORN 4 S76E 1.76**  
**ALSO: LEE S. COBB 1888 (L.2,P.261) "FOUND STONE FOR STAKE"**  
**MDOT: 1955 HIGHWAY PLANS(P.13) "PILE OF STONES & BOAT SPIKE" 12" WALNUT N63°E 51.18'**  
**20" OAK N1°W 31.65' 20" OAK DUE SOUTH 44.28'**  
**MDOT RIGHT-OF-WAY BOOK PAGE 16 INDICATES CORNER IS 15.37' SOUTH OF ROAD CENTERLINE**  
**LAND CORNER RECORDATION CERTIFICATE: #369, BY ROBERT JONKER, P.S. #21572**  
**FOUND 1" BOAT SPIKE 12" BELOW GRADE ON C/L E-W B.T. PAVT. RAISED WITH 1/2" REROD"**  
**C/L TOP CONC. R/W MARKER SOUTH 59.8' PK. E. SIDE 3" ELM N. 56.9'**  
**CHISELED "X" W. END DR. CULV. N55°W 53.7'**

B. Description of corner evidence found and/or method applied in restoring or reestablishing corner:

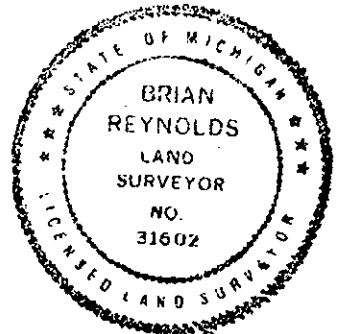
**THE TWO MDOT SOURCES OF HISTORICAL DATA CONFLICT ONE WITH THE OTHER. THE CONSTRUCTION PLANS INDICATE THE CORNER IS ON CENTERLINE OF HIGHWAY M-43. FOUND IRON RECORDED BY JONKER ON CENTERLINE. ALSO FOUND BOAT SPIKE AT SOUTH EDGE OF GRAVEL ROAD SHOULDER, ABOUT 2'+/- BELOW GRADE. APPARENTLY, THE POSITION RECORDED BY JONKER REPRESENTS THE POSITION FROM THE CONSTRUCTION PLANS; THE BOAT SPIKE ON THE SHOULDER REPRESENTS THE POSITION CONSISTENT WITH THE RIGHT-OF-WAY BOOK. MEASUREMENTS AROUND SECTIONS 14 AND 23 TEND TO CONFIRM THE LOCATION OF THE BOAT SPIKE SOUTH OF THE ROAD, BEING MORE CONSISTENT WITH THE CORNERS 1/2 MILE NORTH, SOUTH, EAST AND WEST. DISREGARDED POSITION RECORDED BY JONKER; ACCEPTED FOUND BOAT SPIKE 15.7 FEET SOUTH OF CENTERLINE AS BEST EVIDENCE OF CORNER POSITION,**

C. Description of monument for corner and accessories established to perpetuate locating the position of the corner:

**SET STANDARD BARRY COUNTY REMONUMENTATION MONUMENT (3/4"X36"W/ALUMINUM CAP)**  
**SET 40d NAIL W/PLASTIC CAP IN THE WEST SIDE OF A 40" OAK S2°W 44.46'**  
**SET 40d NAIL W/PLASTIC CAP IN THE SOUTHWEST SIDE U-POLE N64°W 387.33'**  
**TOP CENTER OF CONCRETE RIGHT-OF-WAY MARKER S1°E 43.93'**  
**CENTERLINE OF TOP OF WEST END, ROUND CONCRETE CULVERT N42°W 64.01'**  
**15.70' SOUTH OF CENTERLINE OF CARLTON CENTER ROAD.**

ACT 345 BARRY COUNTY REMONUMENTATION  
APPROVED BY PEER REVIEW AT A MEETING HELD ON

MARCH 13, 1995  
**BRIAN REYNOLDS** COUNTY SURVEYOR



Signed by \_\_\_\_\_  
Surveyor's Michigan License No. 31602

Date AUGUST 16, 1996