

# SURVEY & REMONUMENTATION

FEB 17 1998

## Barry County Remonumentation LAND CORNER RECORDATION CERTIFICATE Filing Requirement of Act 74, Mich. P.A. 1970

SECTION

For corners in

Barry Co.  
(County)

Located in:  
Irving Twp.

Corner Code #



2672

Page: 1 of 2  
01/02/1998 07:49A

Sandy Schondelmayer - Barry Co. LCRCR

1. Public Land Survey

T 4N R 9W

C-11

T R

T R

T R

T R

2. Property Controlling in Section

S T R

S T R

3. Miscellaneous Property in Sec.

S T R

S T R

Register of Deeds Stamp & File Number

4. Lot No. \_\_\_\_\_, Recorded Plat \_\_\_\_\_  
5. Private Claims \_\_\_\_\_

I, Robert Jonker, in a field survey on 05-10, 1997 do hereby state that under requirements of P.A. 74, Michigan P.A. of 1970, the corner points mentioned in lines 1 and 2 above were in conformance with regulations and rules therefore as required in the current manual of survey instructions of the United States Department of the Interior, Bureau of Land Management or by a decree of a Court of Law and /or that the corner points mentioned in lines 3, 4 and 5 above were in conformance with the rules of the Michigan Board of Land Surveyors or by a Decree of a Court of Law; established, re-established, monumented, recovered, found as expressed below:

NOTE: Not more than 2 corners, all in the same town and range, may be recorded on this certificate.

	A	B	C	D	E	F	G	H	I	J	K	L	M
1													
2	6		5		4		3		2		1		
3													
4	7		8		9		10		11		12		
5													
6	18		17		16		15		14		13		
7													
8	19		20		21		22		23		24		
9													
10	30		29		28		27		26		25		
11													
12	31		32		33		34		35		36		
13													

A. Description of original monument and accessories and/or subsequent restoration:

- L.O. survey-1830, S.Sibley, D.S.
- 0.00 set post to sec. 29,30,31,32
- W.Oak 34 E. 15
- W.Oak 34 S 66 1/2 W 47

Old Co. surveyor records

Lee Cobb-1890, found remains of an old stake and remains of gov. bearings-set stone 24x10x6 & brick

- W. Oak 14 N 11 3/4 W 23 1/2
- W. Oak 25 S 24 1/2 W 63 1/2
- R.J. Manchum, L. 27, P. 2220

(over)

B. Description of corner evidence found and/or method applied in restoring or reestablishing corner:

Found 3/4" iron by witnesses listed for LCRC #305.

ACT 345 BARRY COUNTY REMONUMENTATION  
APPROVED BY PEER REVIEW AT A MEETING HELD ON

8 April '96  
BRIAN REYNOLDS

BR  
COUNTY SURVEYOR

Accepted as a careful and faithful perpetuation of the position of the original corner.

C. Description of monument for corner and accessories established to perpetuate locating the position of the corner:

Replaced with standard Barry County Monument.

SW cor. hse. N 81° E 71.00'

NW cor. hse. N 61° E 83.26'

Remon. Tag on E. side P. pole

Remon. tag on N. side corner post

Remon. tag on E. side 9" Mulberry

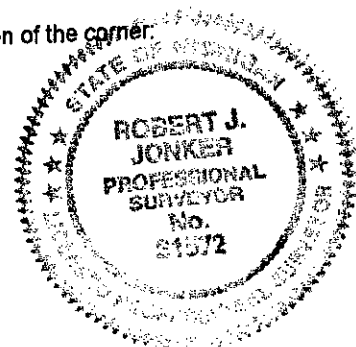
on N-S fence @ old fence to East

Newer fence to West is South 4 1/2' +-

N 3° E 34.35'

West 1.90'

S 33° W 10.75'



Signed by Robert J. Jonker  
Surveyor's Michigan License No. 21572

Date December 30, 1997

Over for Sheet 2

Part "A" (Cont'd)

L.C.R.C. #305, MVK 1980  
Fd. 3/4" iron by existing physical evidence  
Nail 30" Ash S. 5.02'  
NW cor. hse. fndn. NE 83.26'  
SW cor. hse. fndn. ENE 71.00'



**2672**

Page: 2 of 2

01/02/1998 07:49A

Sandy Schondelmayer - Barry Co. LCRCR

Act 132 survey, L.1, P.638  
Paul VanKooten 1980, 3/4" iron  
NW cor. hse. fndn NE 83.26'  
SW cor. hse. fndn ENE 71.0'

**SURVEY &  
REMONUMENTATION**

**FEB 17 1998**

**SECTION**