

SURVEY & REMONUMENTATION

AUG 22 1995

COMMISSION

STATE OF MICHIGAN
COUNTY OF BARRY
RECEIVED FOR RECORD

BARRY COUNTY REMONUMENTATION

LAND CORNER RECORDATION CERTIFICATE

Filing Requirement of Act 74, Mich. P.A. 1970

JAN 25 8 34 AM '95

Sandy Schondelmarper

REGISTER OF DEEDS

Sequence # 2

002280

Register of Deeds Stamp & File Number

For corners in
BARRY

(County)

Located In:

Corner Code #/

1. Public Land Survey	T <u>4N</u> R <u>9W</u>	<u>F-7</u>
IRVING TOWNSHIP	T _____ R _____	_____
1/4 COR COMMON TO	T _____ R _____	_____
SECTIONS 16 AND 21	T _____ R _____	_____
2. Property Controlling	S _____ T _____ R _____	_____
in Section	S _____ T _____ R _____	_____
3. Miscellaneous	S _____ T _____ R _____	_____
Property in Sec.	S _____ T _____ R _____	_____

4. Lot No. _____, Recorded Plat _____
5. Private Claims _____

I, **BRIAN REYNOLDS**, in a field survey on **1 NOV**, 19**94**

do hereby certify that under requirements of P.A. 74, Michigan P.A. of 1970, the corner points mentioned in lines 1 and 2 above were in conformance with regulations and rules therefore as required in the current manual of survey instructions of the United States Department of the Interior, Bureau of Land Management or by a decree of a Court of Law and/or that the corner points mentioned in lines 3, 4 and 5 above were in conformance with the rules of the Michigan Board of Land Surveyors or by a Decree of a Court of Law; established, re-established, monumented, re-monumented, recovered, found as expressed below:

NOTE: Not more than 4 corners, all in the same town and range, may be recorded on this certificate.

A	B	C	D	E	F	G	H	I	J	K	L	M
2	6	5	4	3	2							
3												
4	7	8	9	10	11	12						
5												
6	18	17	16	15	14	13						
7												
8	19	20	21	22	23	24						
9												
10	30	29	28	27	26	25						
11												
12	31	32	33	34	35	36						
13												

A. Description of original monument and accessories and/or subsequent restoration:

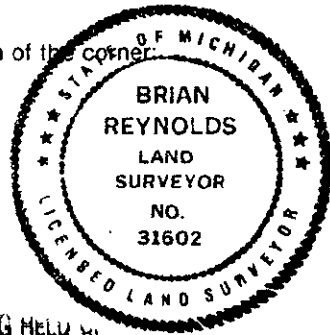
- CORNER ESTABLISHED BY GENERAL LAND OFFICE DEPUTY SURVEYOR SYLVESTER SIBLEY, 1830. W. OAK 10 S4E 27 Do 12 N16 1/2W 24
- COUNTY SURVEYOR FRANK BOWEN, L.1, P271, COUNTY SURVEYOR'S RECORD, 1878, " FOUND BEARING, TOOK NEW ONE W. OAK 30 N63E 28 1/2
- COUNTY SURVEYOR LEE COBB, BOOK IX, P. 130, "IDENTIFIED BY STUMPS OF BOTH U.S. BEARING TREES AND OLD STAKE. SET S4X10X7 WITH CROSS ON TOP AND EARTHEN."
- LCRC #363 BY DON BISSELL, PS #18655, 1983, " FOUND 1/2" PINCHED IRON PIPE, REPLACED WITH 4"X36" CONC. MON. WITH ALUMINUM CAP N59°W-24.01'-TWIN 18" R. OAK N09°E-31.38'-30" R. OAK S73°E-15.59'-10" MAPLE S07°E-5.15'-10" HICKORY
- RECORDED UNDER BARRY COUNTY REMONUMENTATION PROGRAM, LCRC #2076, GARY BILOW, PS #26453, 1993, "FOUND MDNR MONUMENT AND ALL OF BISSELL'S WITNESSES. DID NOT ACCEPT. FOUND STONE SET BY COBB IN 1890 4.2 FEET NORTH. ACCEPTED STONE AS BEST EVIDENCE OF THE ORIGINAL GLO POST" " LEFT STONE IN PLACE-SET 1/2"X24" REBAR WITH PLASTIC CAP STAMPED 'G. C. BILOW LLS 26453' ON NORTH SIDE NORTH 0.28', 1/2" CAPPED REBAR; S27E 4.20', MDNR MONUMENT; S65E 18.95', NAIL & TAG IN 10" MAPLE; N17E 28.29', NAIL & TAG IN 30" RED OAK; S17E 9.28', NAIL & TAG IN 10" HICKORY; N65W 20.63', NAIL & TAG IN TWIN 18" RED OAK STUMP"

B. Description of corner evidence found and/or method applied in restoring or reestablishing corner:

CORNER WAS VISITED BY JACK BUECHE, PS#13027, SEPTEMBER 1994, FOR THE PURPOSE OF REMOVING THE STONE AND SETTING A STANDARD BARRY COUNTY REMON IRON IN ITS PLACE, PURSUANT TO BARRY COUNTY REMONUMENTATION POLICY. BUECHE REPORTED TO THE PEER GROUP THAT HE WAS CONCERNED THAT THE STONE RECITED BY BILOW MAY NOT BE THE STONE SET BY COBB IN 1890, THAT THE CROSS-SECTION DIMENSIONS OF THE STONE WERE CORRECT, BUT THE DEPTH WAS ABOUT 10" SHORT, AND NO EARTHEN WAS FOUND AROUND THE STONE. COUNTY SURVEYOR BRIAN REYNOLDS CONTACTED TOM BENSON, CREW CHIEF FOR MDNR FOR THE 1993 SURVEY AND CONVEYED BUECHE'S CONCERNS. BENSON AGREED TO MEET WITH REYNOLDS TO FURTHER INVESTIGATE AT THE SITE. ON NOVEMBER 1ST, 1994, REYNOLDS, BENSON AND WILL EICHELBERGER (EMPLOYEE OF REYNOLDS') VISITED THE SITE, PERFORMED AN EXTENSIVE EXCAVATION, AND FOUND THE STONE WITH CROSS AND EARTHEN ABOUT 1' BELOW GRADE, 3'+/- EAST OF THE STONE RECORDED BY BILOW, 3' +/- NORTH OF THE MDNR MONUMENT RECORDED BY BISSELL. COBB'S STONE WAS REMOVED, BISSELL'S CONCRETE MONUMENT WAS PLACED WHERE COBB'S STONE HAD BEEN.

C. Description of monument for corner and accessories established to perpetuate locating the position of the corner:

- WITNESSES TO MDNR CONCRETE MONUMENT 4"X36" WITH ALUMINUM CAP
- FOUND NAIL & DNR TAG IN W SIDE 10" HICKORY (NOW DEAD) S05°W 8.18'
- FOUND NAIL & REMON TAG IN S FACE OF 18" OAK N60°W 26.28'
- FOUND NAIL & DNR TAG IN E FACE OF 30" OAK N10°E 28.25'
- FOUND NAIL & DNR TAG IN S FACE OF 12" MAPLE S45°E 14.97'
- POSITION RECORDED IN LCRC #363 S10°W 3.12'
- ACT 345 BARRY COUNTY
- POSITION RECORDED IN LCRC #2076 N75°W 3.06'



APPROVED BY PEER REVIEW AT A MEETING HELD ON

1 NOV '94
BRIAN REYNOLDS
COUNTY SURVEYOR

Signed by [Signature]
Surveyor's Michigan License No. 31602

Date JANUARY 21, 1995