

NOV 04 1996

COMMISSION

BARRY COUNTY REMONUMENTATION

STATE OF MICHIGAN COUNTY OF BARRY RECEIVED FOR RECORD

AUG 20 11 27 AM '96

LAND CORNER RECORDATION CERTIFICATE Filing Requirement of Act 74, Mich. P.A. 1970

Sandy Schondelmaier REGISTER OF DEEDS

002385

Register of Deeds Stamp & File Number

For corners in BARRY

(County)

Located In: Corner Code #

1. Public Land Survey 1/4 CORNER COMMON TO SECTIONS 14 & 15 IRVING TOWNSHIP

Table with columns for Township (4N, 9W), Range (I-6), and Township (T, R) for lines 1-3.

2. Property Controlling in Section

Table with columns for Township (S, T), Range (T, R), and Township (S, T) for lines 2-3.

3. Miscellaneous Property in Sec.

Table with columns for Township (S, T), Range (T, R), and Township (S, T) for lines 3-4.

4. Lot No. Recorded Plat 5. Private Claims

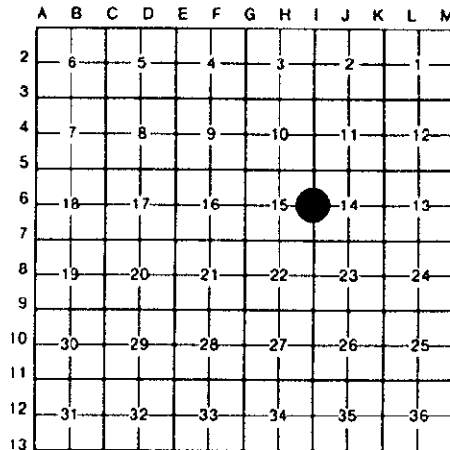
BRIAN REYNOLDS

2 MARCH

1995

I, Brian Reynolds, in a field survey on March 2, 1995 do hereby certify that under requirements of P.A. 74, Michigan P.A. of 1970, the corner points mentioned in lines 1 and 2 above were in conformance with regulations and rules therefore as required in the current manual of survey instructions of the United States Department of the Interior, Bureau of Land Management or by a decree of a Court of Law and/or that the corner points mentioned in lines 3, 4 and 5 above were in conformance with the rules of the Michigan Board of Land Surveyors or by a Decree of a Court of Law; established, re-established, monumented, re-monumented, recovered, found as expressed below:

NOTE: Not more than 4 corners, all in the same town and range, may be recorded on this certificate.



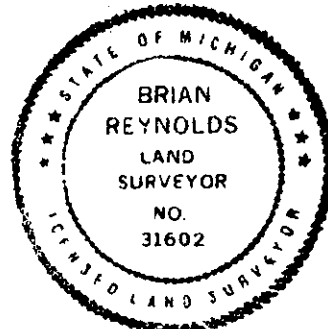
A. Description of original monument and accessories and/or subsequent restoration.

- 1. GENERAL LAND OFFICE: SYLVESTER SIBLEY, D.S., 1830 (R9W,P.166), A. W. OAK 12 S.42E 13 A. HICKORY 6 NORTH 50
2. COUNTY SURVEYOR RECORDS: BOWEN, 15 NOV., 1875 (L.1,P.105), "FOUND ONE BEARING HICKORY W. OAK 30 S85E 25"
3. LAND CORNER RECORDATION CERTIFICATE: #342, BY JAMES A. REDA, P.S. #12590, 12 JANUARY 1982, "SET REROD ON INTERSECTION OF FENCES N-S & W" REROD CAP & NAIL IN N SD 24" OAK N70°W 13.71' CAP & NAIL IN SE SD 16" MAPLE N60°E 9.55' CAP & NAIL IN W SD 6" HICKORY S15°E 22.20' NAIL IN SE SD TWIN 8" HICKORY S40°W 41.06' FENCES N-S & W
*** NO OTHER RECORDED HISTORICAL INFORMATION AVAILABLE FOR THIS CORNER ***

B. Description of corner evidence found and/or method applied in restoring or reestablishing corner:

FOUND 1/2" CAPPED IRON AND WITNESSES BY REDA. AFTER SECTION TRAVERSE OF SECTION 15 AND THE WEST 1/2 OF SECTION 14 AND ANALYSIS OF SECTION MEASUREMENTS, ACCEPTED FOUND IRON AS BEST AVAILABLE EVIDENCE OF CORNER POSITION. REPLACED FOUND CAPPED IRON WITH STANDARD BARRY COUNTY REMONUMENTATION MONUMENT.

ACT 345 BARRY COUNTY REMONUMENTATION APPROVED BY PEER REVIEW AT A MEETING HELD ON MAY 3 1994 BRIAN REYNOLDS COUNTY SURVEYOR



C. Description of monument for corner and accessories established to perpetuate locating the position of the corner:

- SET STANDARD BARRY COUNTY REMONUMENTATION MONUMENT (3/4"X36"W/ALUMINUM CAP) TO WITNESSES IN #3 OF PART "A" ABOVE ADD THE FOLLOWING:
SET 40d NAILW/PLASTIC TAG IN THE SOUTH SIDE OF AN 8" OAK N70°E 21.63'
SET 40d NAILW/PLASTIC TAG IN THE SOUTHERLY SIDE OF A 6" MAPLE N45°W 7.28'
SET 40d NAILW/PLASTIC TAG IN THE SOUTH SIDE OF A 14" OAK S70°E 39.73'

Signed by [Signature]

Date August 16, 1996

Surveyor's Michigan License No. 31602