

REMONUMENTATION

APR 08 1996

COMMISSION

BARRY COUNTY REMONUMENTATION  
LAND CORNER RECORDATION CERTIFICATE  
Filing Requirement of Act 74, Mich. P.A. 1970

STATE OF MICHIGAN  
COUNTY OF BARRY  
RECEIVED FOR RECORD

DEC 15 2 07 PM '95

Sandy Schondelmayer  
REGISTER OF DEEDS

002337

Register of Deeds Stamp & File Number

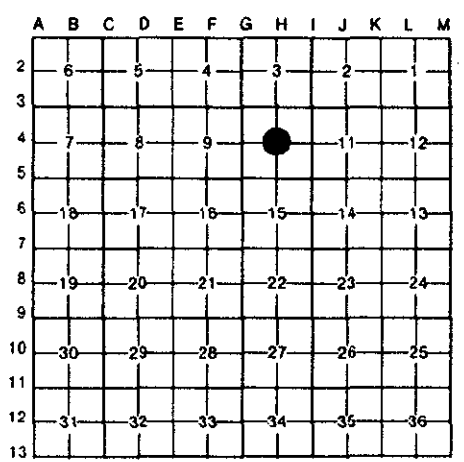
For corners in

BARRY  
(County)

Located In:

Corner Code H-4

- 1. Public Land Survey T 4N R 10W  
**THORNAPPLE TWP.**  
**CENTER 1/4 COR. SEC. 10**
- 2. Property Controlling in Section S      T      R
- 3. Miscellaneous Property in Sec. S      T      R
- 4. Lot No.     , Recorded Plat
- 5. Private Claims



I, **BRIAN REYNOLDS**, in a field survey on 9 AUGUST, 19 95, do hereby certify that under requirements of P.A. 74, Michigan P.A. of 1970, the corner points mentioned in lines 1 and 2 above were in conformance with regulations and rules therefore as required in the current manual of survey instructions of the United States Department of the Interior, Bureau of Land Management or by a decree of a Court of Law and/or that the corner points mentioned in lines 3, 4 and 5 above were in conformance with the rules of the Michigan Board of Land Surveyors or by a Decree of a Court of Law; established, re-established, monumented, re-monumented, recovered, found as expressed below:

**NOTE: Not more than 4 corners, all in the same town and range, may be recorded on this certificate.**

A. Description of original monument and accessories and/or subsequent restoration:

- 1. CORNER NOT SET BY GENERAL LAND OFFICE SURVEY
- 2. COUNTY SURVEYOR LEE S. COBB, MAY 1ST 1888, "COMMENCED AT W 1/4 SEC POST AND RAN EAST, SET TEMP INT 1/4 SEC POST AT SUPPOSED CENTER OF SEC. AND MEASURED EAST...40.00 CHAINS INTERSECTED EAST LINE 6 LKS SOUTH OF POST...THEN COMMENCED AT N 1/4 SEC POST AND RAN SOUTH ON 1/4 SEC LINE INTERSECTED SOUTH LINE 1.24 WEST OF POST, THEREFORE SET TEMP POST 62 LKS E...I ALSO FOUND STAKE AT CENTER OF SEC SET BY MANCHESTER TO BE CORRECT AND MADE BEARINGS SUGAR 14 S62 1/2E 21 1/2 Do. 12 N21 1/2W 30, LEE COBB FIELD BOOK IX, PAGE 11.
- 3. DOUGLAS W. BONNEMA, PS#12679, LAND CORNER RECORDATION CERT. #230, 1978, SET CAPPED REROD AT INTERSECTION OF 1/4 LINES PK IN SDE OLD FENCE POST W/LY 68.56' SPIKE IN SDE 6" WALNUT SOUTH 73.74' SPIKE IN SDE 42" MAPLE SE 17.10' E-W FENCE LINE S 9.0' TREE ROW TO SOUTH WEST 2'+/-
- 4. ACT 132 SURVEY BY BONNEMA, L. 1 OF SURVEYS, P. 451, 1978, MONUMENT AND WITNESSES SAME AS ITEM #3 ABOVE.

B. Description of corner evidence found and/or method applied in restoring or reestablishing corner:

**FOUND MAPLE WITNESS BY BONNEMA, SPIKE IN TREE NOW OVERGROWN, FOUND FENCE AND TREE ROW, OTHER WITNESSES BY BONNEMA GONE. FOUND IRON LAYING HORIZONTAL, AT APPROXIMATE POSITION BY BONNEMA. IT SEEMED LIKELY THAT THE 42" MAPLE WITNESS BY BONNEMA AND THE 14" SUGAR BY COBB REPRESENTED THE SAME TREE. AT DIRECTION AND DISTANCE BY COBB, EXCAVATION REVEALED A BOAT SPIKE ABOUT 0.5' NORTH OF A POINTED STONE (POINT NOT VERTICAL, LEANING SOUTH) WITH PIECES OF BLOND BRICK AROUND IT. FURTHER EXCAVATION REVEALED THE BASE OF A VERY OLD WOOD FENCE CORNER POST WITH OLD FENCE RUNNING EAST, WEST, AND SOUTH. DISREGARDED FOUND IRON. ACCEPTED FOUND BOAT SPIKE AT POINT APPARENTLY FORMERLY OCCUPIED BY POINT OF STONE AS BEST EVIDENCE OF ORIGINAL CORNER POSITION ESTABLISHED BY MANCHESTER, PERPETUATED BY COBB. FROM BOAT SPIKE TO POSITION RECORDED BY BONNEMA N22°05'E, 7.66 FEET (BONNEMA'S BEARING ORIENTATION) REPLACED STONE WITH STANDARD BARRY COUNTY REMONUMENTATION IRON AND PLASTIC CAP INSCRIBED "PA 345 31602"**

C. Description of monument for corner and accessories established to perpetuate locating the position of the corner:

**WITNESSES TO STANDARD BARRY COUNTY REMON IRON W/PLASTIC CAP**

- SET 20d NAIL W/PLASTIC TAG IN THE NORTH SIDE OF A 55" MAPLE S63°E 15.65'
- SET 20d NAIL W/PLASTIC TAG IN THE EAST SIDE OF A 5" CHERRY S5°E 17.98'
- SET 20d NAIL W/PLASTIC TAG IN THE NORTHWEST SIDE OF A 6" CHERRY S57°W 10.11'
- SET 20d NAIL W/PLASTIC TAG IN THE NORTH SIDE OF AN 8" CHERRY S74°W 15.50'
- CORNER IS 1'+/- NORTH OF AN EAST-WEST FENCE
- IN LINE WITH OLD DECAYED FENCE LINE/TREE LINE RUNNING SOUTH



ACT 345 BARRY COUNTY REMONUMENTATION  
APPROVED BY PEER REVIEW AT A MEETING HELD ON

Oct 9, 1995 BR  
BRIAN REYNOLDS COUNTY SURVEYOR

Signed by [Signature] 12/15/95 Date  
Surveyor's Michigan License No. 31602