

MAY 20 1997

COMMISSION

APPROVED LAND CORNER  
P.A. 345 OF 1990 - Bay County  
Date 19 Sept 96  
MTM  
Michael MacDonald P.S.  
County Representative

Bay County Remonumentation  
LAND CORNER RECORDATION CERTIFICATE  
Filing Requirement of Act 74, Mich. P.A. 1970

For corners in

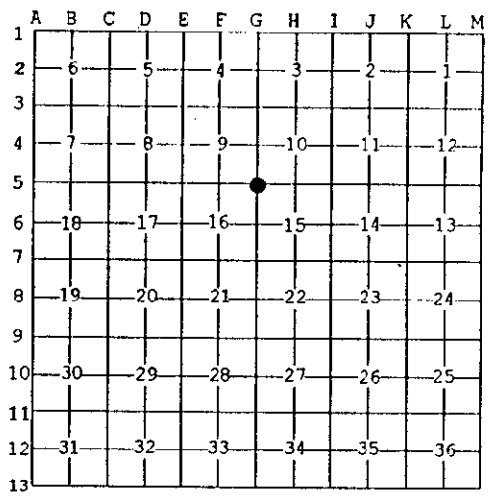
Bay (County)	Located In:	Corner Code #
1. Public Land Survey	T <u>13NR</u> <u>4E</u>	<u>G-5</u>
	T ___ R ___	_____
	T ___ R ___	_____
	T ___ R ___	_____
	T ___ R ___	_____
2. Property Controlling in Section	S ___ T ___ R ___	_____
	S ___ T ___ R ___	_____
3. Miscellaneous Property in Sec.	S ___ T ___ R ___	_____
	S ___ T ___ R ___	_____

REGISTER OF DEEDS  
 BAY COUNTY, MICHIGAN  
 DEC 30 4 40 PM '96  
 RECORDED

Register of Deeds Stamp & File Number

4. Lot No. \_\_\_\_\_, Recorded Plat \_\_\_\_\_  
5. Private Claims \_\_\_\_\_

I, Paul M. Ciosek, in a field survey on August 23, 1996 do hereby state that under requirements of P.A. 74, Michigan P.A. of 1970, the corner points mentioned in lines 1 and 2 above were in conformance with regulations and rules therefore as required in the current manual of survey instructions of the United States Department of the Interior, Bureau of Land Management or by a decree of a Court of Law and /or that the corner points mentioned in lines 3, 4 and 5 above were in conformance with the rules of the Michigan Board of Land Surveyors or by a Decree of a Court of Law; established, re-established, monumented, recovered, found as expressed below:



NOTE: Not more than 2 corners, all in the same town and range, may be recorded on this certificate.

A. Description of original monument and accessories and/or subsequent restoration:

G-5 Post by Wampler - 1822.  
Stone buried in Road - H. Cary, County Surveyor on February 1880.  
  
L.C.R.C. - L. 1, P. 601, 1973.  
Recorded Surveys - Total of 18.

B. Description of corner evidence found and/or method applied in restoring or reestablishing corner:

G-5 Fnd RR spike in monument box, remove RR spike and dig in side of monument box, at 4" down fnd old bit. road surface, then gravel fill until at 18" down fnd granite rock over 6" wide, County surveyor notes call for stone buried in road, 1880.  
  
L.C.R.C. - L. 1, P. 601, NE 45.95' to TP, (45.93' - M to nail and tag) NW 70.7' to PP (70.7' - M to face).

Accepted stone as the best available evidence of the position of the original corner.

C. Description of monument for corner and accessories established to perpetuate locating the position of the corner:

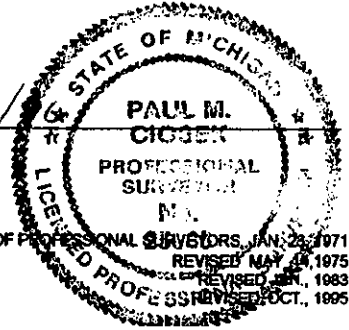
G-5 Split above stone and set Bay County remon mon (5/8" x 24" rebar with brass cap and 3/16" drill hole) in monument box at 2.7' E of centerline of Mackinaw Road.

NE 45.93' to nail and tag in SE face of UP.  
NE 121.06' to SW cor of cem blk fndtn of encllo porch on Hse #1509.  
NW 71.02 to nail and tag in SW face of PP.  
NW 139.39' to SE cor of fndtn of Hse #6988.  
N 65° W 119.64' to SE cor of conc porch at store, 2' above ground,  
SE 46.52' to nail and tag in NE face of UP.

Distance by E.D.M.

Signed by Paul M. Ciosek  
Surveyor's Michigan License No. 25835

Date 12/23/96



See Bay County Remon Field Book Pg 16 & 50

003 357