

MAY 20 1997

COMMISSION

APPROVED LAND CORNER
P.A. 345 DF 1990 - Bay County
Date 19 Sept 96
HJM
Michael MacDonald P.S.
County Representative

Bay County Remonumentation

LAND CORNER RECORDATION CERTIFICATE
Filing Requirement of Act 74, Mich. P.A. 1970

For corners in

Bay (County)	Located In:	Corner Code #
1. Public Land Survey	T <u>13NR</u> <u>4E</u>	<u>H-5</u>
	T ___ R ___	_____
	T ___ R ___	_____
	T ___ R ___	_____
2. Property Controlling in Section	S ___ T ___ R ___	_____
	S ___ T ___ R ___	_____
3. Miscellaneous Property in Sec.	S ___ T ___ R ___	_____
	S ___ T ___ R ___	_____

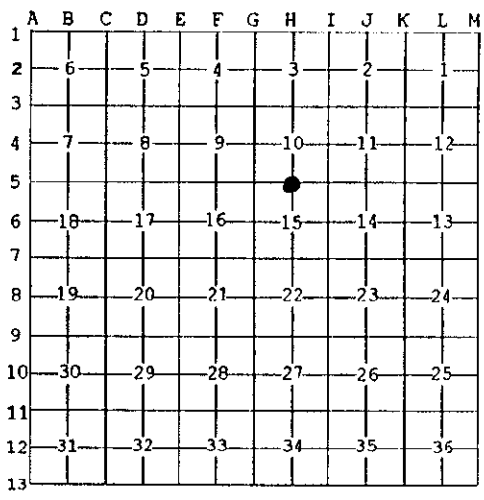
RECORDED

Dec 30 4 41 PM '96

Register of Deeds Stamp & File Number

BAY COUNTY, MICHIGAN

4. Lot No. _____, Recorded Plat _____
5. Private Claims _____



I, Paul M. Ciosek, in a field survey on August 23, 1996 do hereby state that under requirements of P.A. 74, Michigan P.A. of 1970, the corner points mentioned in lines 1 and 2 above were in conformance with regulations and rules therefore as required in the current manual of survey instructions of the United States Department of the Interior, Bureau of Land Management or by a decree of a Court of Law and/or that the corner points mentioned in lines 3, 4 and 5 above were in conformance with the rules of the Michigan Board of Land Surveyors or by a Decree of a Court of Law; established, re-established, monumented, recovered, found as expressed below:

NOTE: Not more than 2 corners, all in the same town and range, may be recorded on this certificate.

A. Description of original monument and accessories and/or subsequent restoration:

H-5 Set post by J. Mullett in 1839.
Stone buried in road - H. Cary, County Surveyor in February 1880.

L.C.R.C. - L. 1, P. 601 - 1973, PK nail.
Recorded Surveys - (Total of 17) PK nail.

B. Description of corner evidence found and/or method applied in restoring or reestablishing corner:

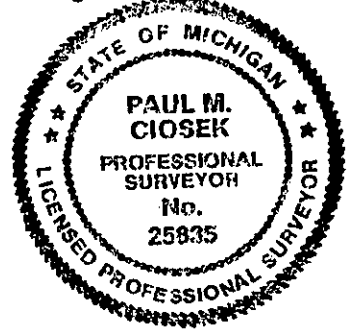
H-5 Fnd 3/8" rebar in bit patch and PK nail 0.47' NE and outside of bit patch, remove iron and dig hole 18" in dia, at 4" below bit find 1/2 slab conc road 8" thick, and pob gravel. At 16" deep through grav and into sand, at 20" deep fnd 10" dia stone per 1880 County Surveyor notes. 3/8" rebar was centered over stone and agrees with 2 witnesses on L.C.R.C. - L. 1, P. 601 and numerous surveys.

Accepted as the best available evidence of the position of the original corner.

C. Description of monument for corner and accessories established to perpetuate locating the position of the corner:

H-5 Set Bay County Remon mon (5/8" x 24" rebar with brass cap and 3/16" drill hole) on slight angle to miss stone and cap is centered over stone.

- N 74° E 40.38' to conc nail and tag in top of centerline N bridge handrail.
- S 72° E 36.60' to mag nail and tag in top centerline S bridge handrail.
- S 34.24' to PK nail in W face of PP (level with road).
- N 73° W 96.25' to nail in S face of 20" Walnut.
- N 13° E 159.28' to SE cor cem blk fndt of Hse.
- S 50° E 176.02' to SW cor of brick Hse #1766.
- S 60° E 157.07' to NW cor of brick Hse #1766.



NOTE: Bearings are based on GPS and dist by E.D.M.
Date _____

Signed by Paul M. Ciosek
Surveyor's Michigan License No. 25835

See Bay County Remon Field Book Pg. 19 & 51