

BAY COUNTY REMONUMENTATION  
 LAND CORNER RECORDATION CERTIFICATE  
 Filing Requirement of Act 74, Mich. P.A. 1970

For corners in

BAY  
 (County)

Located In: Sec. 31 Corner Code #

- |                                    |   |           |   |          |       |
|------------------------------------|---|-----------|---|----------|-------|
| 1. Public Land Survey              | T | <u>14</u> | R | <u>3</u> | C-12  |
|                                    | T | <u>14</u> | R | <u>3</u> | C-13  |
|                                    | T | _____     | R | _____    | _____ |
|                                    | T | _____     | R | _____    | _____ |
| 2. Property Controlling in Section | S | _____     | T | _____    | _____ |
|                                    | S | _____     | T | _____    | _____ |
| 3. Miscellaneous Property in Sec.  | S | _____     | T | _____    | _____ |
|                                    | S | _____     | T | _____    | _____ |

Saginaw County  
 REGISTER OF DEEDS  
 BAY COUNTY, MICHIGAN

JAN 7 2 25 PM '94

RECORDED

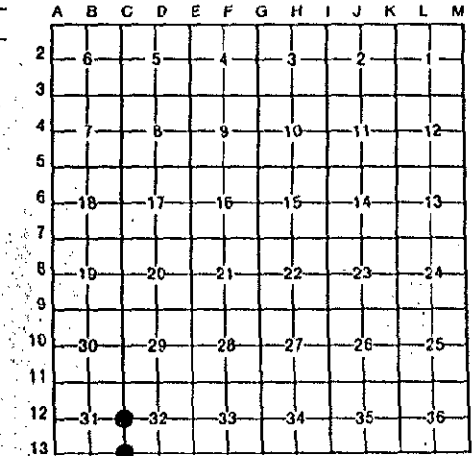
Register of Deeds Stamp & File Number

4. Lot No. \_\_\_\_\_, Recorded Plat \_\_\_\_\_
5. Private Claims \_\_\_\_\_

I, Donald R. Burgin, in a field survey on October 30, 19 93, do hereby certify that under requirements of P.A. 74, Michigan P.A. of 1970, the corner points mentioned in lines 1 and 2 above were in conformance with regulations and rules therefore as required in the current manual of survey instructions of the United States Department of the Interior, Bureau of Land Management or by a decree of a Court of Law and/or that the corner points mentioned in lines 3, 4 and 5 above were in conformance with the rules of the Michigan Board of Land Surveyors or by a Decree of a Court of Law; established, re-established, monumented, re-monumented, recovered, found as expressed below:

**NOTE: Not more than 4 corners, all in the same town and range, may be recorded on this certificate.**

- A. Description of original monument and accessories and/or subsequent restoration:
- C-12 L.C.R.C. L.2 P.237
- C-13 L.C.R.C. L.2 P.234 (Bay County)  
 L.C.R.C. L.3 P.37 (Saginaw County)



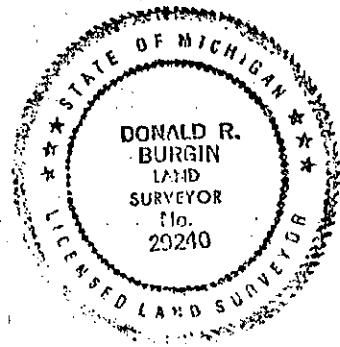
SURVEY &  
 REMONUMENTATION

MAR 3 1 1994

COMMISSION

B. Description of corner evidence found and/or method applied in restoring or reestablishing corner:

- C-12 Found 1/2" rod at surface.  
 Found 3"x3"x18" wood post in rock mound 1.5 ft. deep.  
 Replaced with 5/8" rebar with Brass Cap.  
 Set Monument Box.
- C-13 Found 5/8" iron rod in Monument Box.  
 Set Brass Cap on rod.



C. Description of monument for corner and accessories established to perpetuate locating the position of the corner:

- C-12  
 N 55°W 21.86 ft. to North end of 15" c.m.p. with filed "v"  
 S 42°W 35.25 ft. to South end of 15" c.m.p. with filed "v"  
 S 87°E 38.11 ft. to nail in South face of utility pole  
 S 40°W 41.83 ft. to centerline of 3' tall steel fence corner post

- C-13  
 N 65°E 46.18 ft. to nail and Remon. tag in SE face of 24" Maple tree  
 N 30°W 30.25 ft. to West end of 24" R.C.P.  
 S 47°W 62.53 ft. to fiber cable warning sign post  
 S 25°E 105.52 ft. to nail and Remon. tag in NE face of utility pole

Signed by Donald R. Burgin

Date 12/23/93

Surveyor's Michigan License No. 29240