

BAY COUNTY REMONUMENTATION

LAND CORNER RECORDATION CERTIFICATE Filing Requirement of Act 74, Mich. P.A. 1970

For corners in

Bay

(County)

Located In:

Corner Code #

14 N. 5 E.

K-11

1. Public Land Survey

T _____ R _____

T _____ R _____

T _____ R _____

T _____ R _____

2. Property Controlling
in Section

S _____ T _____ R _____

S _____ T _____ R _____

3. Miscellaneous
Property in Sec.

S _____ T _____ R _____

S _____ T _____ R _____

4. Lot No. _____, Recorded Plat _____

5. Private Claims _____

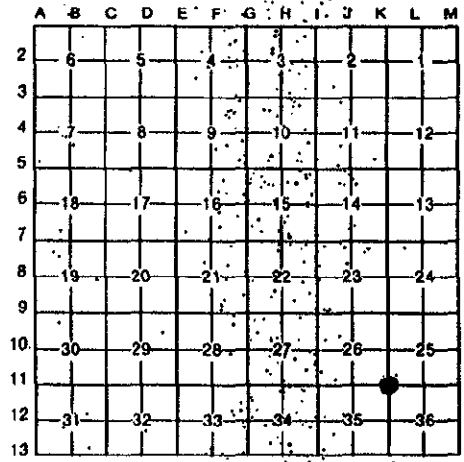
RECEIVED
 DEC 22 12:38 PM '95
 REGISTER OF DEEDS
 BAY COUNTY, MICHIGAN

003 241

Register of Deeds Stamp & File Number

I, Ronald C. Prevost, in a field survey on October 19, 1995, do hereby certify that under requirements of P.A. 74, Michigan P.A. of 1970, the corner points mentioned in lines 1 and 2 above were in conformance with regulations and rules therefore as required in the current manual of survey instructions of the United States Department of the Interior, Bureau of Land Management or by a decree of a Court of Law and/or that the corner points mentioned in lines 3, 4 and 5 above were in conformance with the rules of the Michigan Board of Land Surveyors or by a Decree of a Court of Law; established, re-established, monumented, re-monumented, recovered, found as expressed below:

NOTE: Not more than 4 corners, all in the same town and range, may be recorded on this certificate.



A. Description of original monument and accessories and/or subsequent restoration:

K-11 Post Set by Wampler 1821
 Ash 14" S.20°W. 12 L
 Ash 10" N.28°E. 3 L
 Not Recorded
 Wood Stake & Stone Co. Record 1938 & 1955
 C.P. Co. info (Iron) - (1 1/2" Iron) Witnesses gone and or altered

B. Description of corner evidence found and/or method applied in restoring or reestablishing corner:

K-11 Found 1 1/2" Iron Bar in Mon. Box leaning.
 Also found P.K. Nail & Cap 1.10' N. & 0.40' E. of 1 1/2" Bar
 Measured distances N. S. & E. Agree quite well
 Excavated under and around bar found nothing, all sand construction fill.
 Holding with 1 1/2" Bar Location.
 Monument accepted as the best available evidence of the position of the original corner.

APPROVED LAND CORNER
 P.A. 345 OF 1990 - Bay County
 Date 19 Oct 95
MJM
 Michael MacDonald P.S.
 County Representative

C. Description of monument for corner and accessories established to perpetuate locating the position of the corner:

K-11 Replaced 1 1/2" leaning bar with 5/8" X 24" Re-Bar with 2 3/4" Bay Co. Brass Cap and set Mon. Box on 11-15-95
 P.K. Nail in N. Face P. & T. Pole S.45°E. 54.14
 N.E. Corner Brick Ho Fnd'n S.30°W. 123.45
 Ctr. Hydrant N.40°E. 89.80
 P.K. Nail N.E. Face Guy Pole N.45°W. 83.51



Signed by Ronald C. Prevost

Date 12-8-95

Surveyor's Michigan License No. 24612