

~~SURVEY~~
REMONUMENTATION

Bay County Remonumentation

MAR 8 1993

LAND CORNER RECORDATION CERTIFICATE
Filing Requirement of Act 74, Mich. P.A. 1970

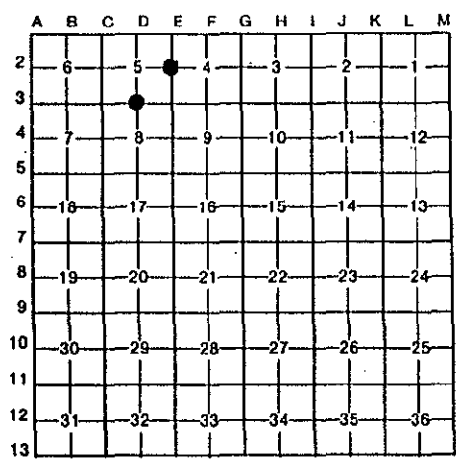
For corners in

Bay (County)	Located In:	Corner Code #
1. Public Land Survey	T <u>17N</u> R <u>4E</u>	<u>D-3</u>
	T <u>17N</u> R <u>4E</u>	<u>E-2</u>
	T _____ R _____	_____
	T _____ R _____	_____
2. Property Controlling in Section	S _____ T _____ R _____	_____
	S _____ T _____ R _____	_____
3. Miscellaneous Property in Sec.	S _____ T _____ R _____	_____
	S _____ T _____ R _____	_____

REGISTER OF DEEDS
 BAY COUNTY MICHIGAN
 DEC 22 11 17 AM '93
 RECORDED
 LIBER 003 PAGE 44
 Register of Deeds Stamp & File Number

4. Lot No. _____, Recorded Plat _____
 5. Private Claims _____

I, Craig W. McVean, in a field survey on August 27, 1993, do hereby certify that under requirements of P.A. 74, Michigan P.A. of 1970, the corner points mentioned in lines 1 and 2 above were in conformance with regulations and rules therefore as required in the current manual of survey instructions of the United States Department of the Interior, Bureau of Land Management or by a decree of a Court of Law and/or that the corner points mentioned in lines 3, 4 and 5 above were in conformance with the rules of the Michigan Board of Land Surveyors or by a Decree of a Court of Law; established, re-established, monumented, re-monumented, recovered, found as expressed below:



NOTE: Not more than 4 corners, all in the same town and range, may be recorded on this certificate.

A. Description of original monument and accessories and/or subsequent restoration:

D-3 Set post - J. Burt, 1843.
 Maple 20° N 35° W 7 L.
 Birch 8° S 53° E 23 L.

E-2 Set post - J. Burt, 1843.
 Hemlock 8° S 59° E 9 L.
 Elm 15° N 31° W 9 L.

L.C.R.C. - L. 2, P. 55 - 1974 - Porter.
 L.C.R.C. - L. 2, P. 476 - 1977 - Sedgeman.
 M.D.O.T. witness card.
 Recorded Surveys - L. 849, P. 985 - 1977; L. 1090, P. 431 - 1988; L. 752, P. 336 - 1975.

L.C.R.C. - L. 2, P. 279 - 1977 - McGinnis.
 Recorded Surveys - L. 762, P. 155 - 1975; L. 1042, P. 103 - 1987.

B. Description of corner evidence found and/or method applied in restoring or reestablishing corner:

D-3 Found 3/4" pinch pipe in mon. box per recorded L.C.R.C.'s. Distance W fits M.D.O.T. witness card. Distance E fits recorded surveys. Monument accepted as the best available evidence of the position of the original corner. Accepted by Bay County Peer Review Group on 10-21-93.

E-2 Found 3/8" iron rebar per L.C.R.C. - L. 2, P. 279 and recorded surveys. Monument accepted as the best available evidence of the position of the original corner. Accepted by Bay County Peer Review Group on 10-21-93.



C. Description of monument for corner and accessories established to perpetuate locating the position of the corner:

D-3 Replaced 3/4" pinch pipe with 2-3/4" Bay County brass cap on 5/8" rebar in mon. box.
 N 45° W 47.47' to nail and tag in E side cutoff U.P.
 S 0° E 24.60' to nail and tag in W side RR tie anchor post.
 N 36° E 130.40' to SW corner of House #761.
 N 58° E 180.55' to SE corner of garage.

E-2 Replaced 3/8" rebar with 2-3/4" Bay County brass cap on 5/8" rebar in mon. box - 6" below gravel road.
 N 85° E 54.00' to nail and tag in S face 8" Elm.
 N 15° E 104.94' to nail and tag in E face telephone pedestal post.
 N 15° W 126.03' to nail and tag in E face 8" Pine.
 N 50° W 59.93' to nail and tag in NE face 12" Pine.
 N 35° E 44.37' to centerline 4" pipe fence post.

Signed by Craig W. McVean
 Surveyor's Michigan License No. 39088

Date 12/20/93