

Bay County Remonumentation

MAR 31 1994

LAND CORNER RECORDATION CERTIFICATE
Filing Requirement of Act 74, Mich. P.A. 1970

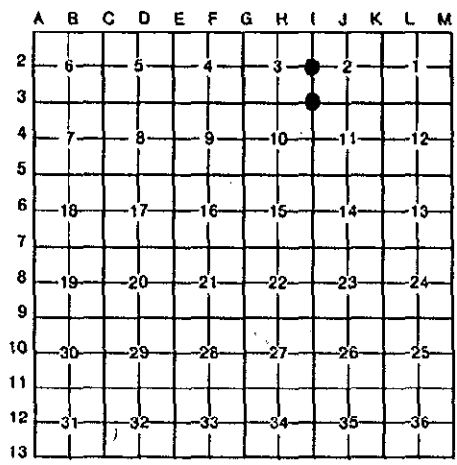
LIBER 003 PAGE 46
Dec 22 11 17 AM 1993
REGISTER OF DEEDS
BAY COUNTY, MICHIGAN
RECORDED

For corners in:

Bay (County)	Located In:	Corner Code #
1. Public Land Survey	T 17N R 4E	I-2
	T 17N R 4E	I-3
	T R	
	T R	
2. Property Controlling in Section	S T R	
	S T R	
3. Miscellaneous Property in Sec.	S T R	
	S T R	

Register of Deeds Stamp & File Number

4. Lot No. _____, Recorded Plat _____
5. Private Claims _____



I, Craig W. McVean, in a field survey on September 16, 19 93, do hereby certify that under requirements of P.A. 74, Michigan P.A. of 1970, the corner points mentioned in lines 1 and 2 above were in conformance with regulations and rules therefore as required in the current manual of survey instructions of the United States Department of the Interior, Bureau of Land Management or by a decree of a Court of Law and/or that the corner points mentioned in lines 3, 4 and 5 above were in conformance with the rules of the Michigan Board of Land Surveyors or by a Decree of a Court of Law; established, re-established, monumented, re-monumented, recovered, found as expressed below:

NOTE: Not more than 4 corners, all in the same town and range, may be recorded on this certificate.

A. Description of original monument and accessories and/or subsequent restoration:

I-2 Set post - J. Burt, 1843.
Maple 10" S 36° E 81 Lks.
Aspen 11" N 38° W 12 Lks.

I-3 Set post - J. Burt, 1843.
Beech 15" N 23° W 36 Lks.
Beech 10" S 64° W 44 Lks.

L.C.R.C. - L. 2, P. 101 - 1974 - McGinnis.
M.D.O.T. ROW plans - Project 9-4, Control Section 09033, P. 50.
Recorded Surveys - L. 657, P. 274 - 1971; L. 657, P. 275 - 1971; L. 1003, P. 952 - 1985; L. 1159, P. 185 - 1985; L. 713, P. 608 - 1973.

M.D.O.T. ROW Plans Project 9-4, Control Section 09033, P. 50.
County Surveyor Notes - G. Turner - 1907.
Recorded Surveys - L. 657, P. 274 - 1971; L. 657, P. 275 - 1971; L. 1003, P. 952 - 1985; L. 937, P. 156 - 1983; L. 1159, P. 185 - 1990; L. 719, P. 51 - 1973.

B. Description of corner evidence found and/or method applied in restoring or reestablishing corner:

I-2 Found 1" iron bar (1" pipe - rec) in mon. box per recorded L.C.R.C. and recorded surveys. Fits M.D.O.T. ROW plan distance N & S. Monument accepted as the best available evidence of the position of the original corner. Accepted by Bay County Peer Review Group on 10-21-93.

I-3 Found 3/4" iron bar in mon. box per recorded surveys. Fits M.D.O.T ROW plan distance N & S. Fits County surveyor distance West. Monument accepted as the best available evidence of the position of the original corner. Accepted by Bay County Peer Review Group on 10-21-93.



C. Description of monument for corner and accessories established to

I-2 Replaced 1" iron bar with 2-3/4" Bay County brass cap on 5/8" rebar in mon. box.
N 60° W 72.16' to nail and tag in S face U.P.
N 44° E 104.15' to nail and tag in S face U.P.
S 67° E 64.99' to nail and tag in 8" Ash.
S 72° W 67.84' to chiseled 'x' on top concrete ROW marker.
N 50° W 58.50' to capped 3/8" rebar.

perpetuate locating the position of the corner:

I-3 Replaced 3/4" iron bar with 2-3/4" Bay County brass cap on 5/8" rebar in mon. box.
N 15° E 156.62' to chiseled 'x' on top of SE corner concrete bridge handrail.
N 72° E 51.67' to nail and tag in S face U.P.
N 56° W 120.67' to nail and tag in S face of telephone box guard post.
S 74° W 101.64' to nail and tag in N face U.P.
S 34° E 55.18' to capped 3/8" rebar.

Signed by Craig W. McVean
Surveyor's Michigan License No. 39088

Date 12/20/93