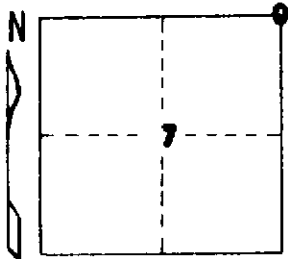


STATE OF MICHIGAN
DEPARTMENT
OF
NATURAL RESOURCES

LAND CORNER RECORD

BENZIE COUNTY
T 26 N R 13 W

DESCRIPTION OF CORNER NE corner Sec. 7
CORNER MONUMENT Found 3/4" pipe & square rod - added DNR Monument
DATE MONUMENT PLACED AND WITNESSED 4-21-72
WITNESSES TO CORNER..... 18" Maple S 64 E 63.94'

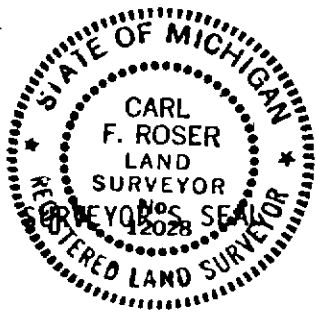


9" R. Pine N 50 E 50.30'
8" R. Pine S 40 W 45.75'
AND

CIRCLE CORNER REGISTERED

DESCRIPTION IN DETAIL AS TO HOW CORNER WAS LOCATED AND IDENTIFIED OR RESTORED.

Found 3/4" pipe and square rod at intersection of roads N-S-E-W.



SIGNED

Carl F. Roser

DATE

5-22-72

DISTRIBUTION:

REGISTERED LAND SURVEYOR **12028**

County Courthouse
Area Forester (Regions I & II)
District or Region Surveyor
Forestry Div., Lansing