

MAR 5 9 2000

LAND CORNER RECORDATION CERTIFICATE
Filing Requirement of Act 74, Mich. P.A. 1970

SECTION

For corners in

Table with columns: Benzie (County), Located In, Corner Code #. Rows include Public Land Survey, Property Controlling in Section, and Miscellaneous Property in Sec.

LIBER 2 PAGE 278

STATE OF MICHIGAN
BENZIE COUNTY
RECORDED

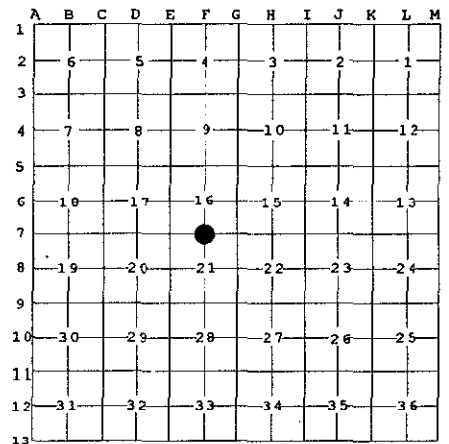
12 JAN 2000 9:22:41 AM
MICHELLE R. GRAY
REGISTER OF DEEDS
PAGES One

Register of Deeds Stamp & File Number

4. Lot No. , Recorded Plat
5. Private Claims

I, Craig W. McVean, in a field survey on November 3, 1999 do hereby state that under requirements of P.A. 74, Michigan P.A. of 1970, the corner points mentioned in lines 1 and 2 above were in conformance with regulations and rules therefore as required in the current manual of survey instructions of the United States Department of the Interior, Bureau of Land Management or by a decree of a Court of Law and /or that the corner points mentioned in lines 3, 4 and 5 above were in conformance with the rules of the Michigan Board of Land Surveyors or by a Decree of a Court of Law; established, re-established, monumented, recovered, found as expressed below:

NOTE: Not more than 2 corners, all in the same town and range, may be recorded on this certificate.



A. Description of original monument and accessories and/or subsequent restoration:

- F-7 - GLO - Maple 10" dia. - 1/4 Cor. - Alvin & Austin Burt - 1839
Hemlock 12" N5°W 39 L.
- Co. Bk., P. 8 - C.P. Tuller - 1900
Found the stump of the Maple corner and the stump of the Hemlock witness.
- Co. Bk., Pg. 22 - C.P. Tuller - 1903
Retraced S. line of Sec. 15 & 16
No mention of S 1/4 Post, Sec. 16
-LCRC - L. 1, P. 312 - R.M. Harris - 1994
Conc. Monument & steel post set
(Proportionate to GLO)
Tw. 16" Oaks S36°W 54.59'
6" Maple N7°E 4.01'
6" W. Pine S78°W 75.14'
14" Maple S37°E 48.84'
43' North of Two Track Road

B. Description of corner evidence found and/or method applied in restoring or reestablishing corner:

F-7 - 1/4 Corner common to Sec.'s 16&21, T26N,R13W. - FND. 4" Cyl. Conc. Mon. w/ Plastic PS Cap # 25845 per RMH
LCRC - L. 1, P. 312. FND. fence post on ground in hole 2'± SW'ly. Could find no evidence of corner tree per Tuller's 1900 survey. Tuller's 1903 survey done to establish the SE Cor. of Sec. 16 & the S 1/4 Cor. of Sec. 15 - makes no mention of S 1/4 Cor. of Sec. 16, but used SW Cor. of Sec. 16 to prorate 2 miles to the East. Accept Conc. Mon. as a careful & faithful re-establishment of the position of the original corner.

C. Description of monument for corner and accessories established to perpetuate locating the position of the corner:

F-7 - Replaced capped 4" x 2.5' long conc. mon. with 3" 'Benzie Co. Remon.' Brass Cap on 3/4" x 36" iron pipe-encased in 4" x 36" concrete cylinder
*S30W 54.56' to set N&T in NW. Side 16" Twin R. Oak
*N2°E 3.99' to set N&T in E. Side 5" R. Maple
*S74°W 75.12' to set N&T in N. Side 7" W. Pine
*S40°E 49.88' to set N&T in SW. Side 12" S. Maple
N54°E 118.43' to set N&T in NW. Side 4" W. Pine
Set Blue Carsonite post 1' N.
Reset steel fence post 1' S.

*RMH witnesses, our N&T set next to his.

Ratified by Peer Group
In accordance with P.A. 345
Chairman [Signature]
Date 11/31/1999



Signed by Craig W. McVean
Surveyor's Michigan License No. 39088

Date 12/8/1999