

RF

MAR 9 2000

LAND CORNER RECORDATION CERTIFICATE LIBER 2 PAGE 260
Filing Requirement of Act 74, Mich. P.A. 1970

SECTION

For corners in

<u>Benzie</u> (County)	Located In:	Corner Code #
1. Public Land Survey	T <u>26N R 14W</u>	<u>I-5(Homestead)</u>
—	T <u> </u> R <u> </u>	_____
—	T <u> </u> R <u> </u>	_____
—	T <u> </u> R <u> </u>	_____
2. Property Controlling in Section	S <u> </u> T <u> </u> R <u> </u>	_____
—	S <u> </u> T <u> </u> R <u> </u>	_____
3. Miscellaneous Property in Sec.	S <u> </u> T <u> </u> R <u> </u>	_____
—	S <u> </u> T <u> </u> R <u> </u>	_____

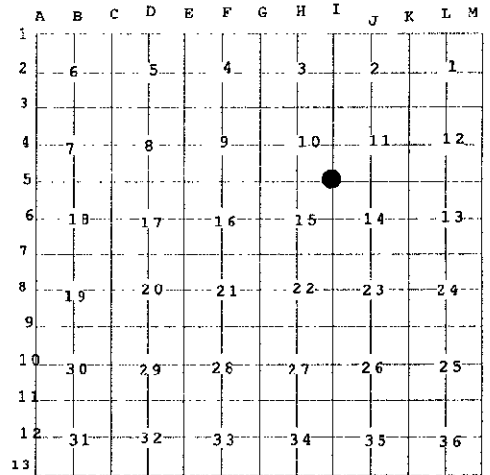
STATE OF MICHIGAN
BENZIE COUNTY
RECORDED

5 JAN 2000 3:26:41 PM
MICHELLE R. GRAY
REGISTER OF DEEDS
PAGES one

Register of Deeds Stamp & File Number

4. Lot No. _____, Recorded Plat _____

5. Private Claims _____



I, David T. Rowe, in a field survey on October 19, 1999 do hereby state that under requirements of P.A. 74, Michigan P.A. of 1970, the corner points mentioned in lines 1 and 2 above were in conformance with regulations and rules therefore as required in the current manual of survey instructions of the United States Department of the Interior, Bureau of Land Management or by a decree of a Court of Law and /or that the corner points mentioned in lines 3, 4 and 5 above were in conformance with the rules of the Michigan Board of Land Surveyors or by a Decree of a Court of Law; established, re-established, monumented, recovered, found as expressed below:

NOTE: Not more than 2 corners, all in the same town and range, may be recorded on this certificate.

A. Description of original monument and accessories and/or subsequent restoration:

I-5: ¼ Corner Common to Sections 10, 11, 14 and 15:

G.L.O. Notes: 1839 Set Post. 12" Beech S62°E 30lks. 16" Beech N8°W 39lks.

County Records: 1874 D. Holden, Surveyors Record I, page 109, set from original bearing trees. Cedar post 3" square set 3' in ground with broken pottery on South Face two feet below surface. Post marked on one side 1874.

1908 F. Haswell, Drove 1 1/4" galvanized pipe where original stake was from original witness.

1973 H. Bruning, L.I, page 93, Fd. Monument box in center-line highway.

1977 W. Batzer, Recorded Surveys L.I, page 741, Fd. Iron in monument box. N34°E 69.45' 10" R. Pine, N56°W 54.14' P. Pole, S30°E 70.60' 8" J. Pine, South 6.74' center-line of paving.

1996 F. Case, Iron in monument box. Same witness as Batzer.

B. Description of corner evidence found and/or method applied in restoring or reestablishing corner:

I-5: ¼ Corner Common to Sections 10, 11, 14 and 15:

1999 Fd. 3" iron pipe 1.3' below surface in monument box 6.5' N of center-line US-31 and 3' W. of center-line Pioneer Road. The Benzie County Peer Group accepted the iron pipe in monument box as being the best evidence of a locally accepted corner.

C. Description of monument for corner and accessories established to perpetuate locating the position of the corner:

I-5: ¼ Corner Common to Sections 10, 11, 14 and 15:

3" iron pipe replaced with ¾" i. d. galvanized 36" long iron pipe with a stamped brass cap in a monument box 6.5' N of center-line US-31 and 3' W. of center-line Pioneer Road.

Witnesses:

- S12°E 89.72' Fd. Nail E. face P. Pole
- S30°E 73.32' Fd. Nail SE Face 3" Cherry
- N39°E 69.35' Fd. Nail NE Face 16" R. Pine
- N13°W 87.73' Fd. Nail E. Face 40" Maple

Ratified by Peer Group
In accordance with P.A. 345

Chairman [Signature]

Date 11/9/1999



Signed by David T. Rowe

Date Dec 17, 1999

Surveyor's Michigan License No. 11192