

LAND CORNER RECORDATION CERTIFICATE

Filing Requirement of Act 74, Mich. PA 1970

For Corners In: Benzie (County)	Located In	Corner Code #
1. Public Land Survey	T _____ R _____	_____
	T _____ R _____	_____
2. Property Controlling in Section	S <u>24</u> T <u>26N</u> R <u>14W</u>	<u>15</u>
	S <u>24</u> T <u>26N</u> R <u>14W</u>	<u>16</u>
3. Miscellaneous Property in Section	S _____ T _____ R _____	_____
	S _____ T _____ R _____	_____

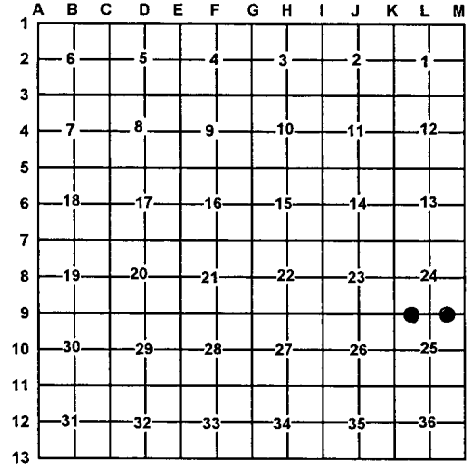
Register of Deeds Stamp & File Number

4. Lot No: _____ Recorded Plat: _____

5. Private Claims: _____

I, Craig W. McVean, in a field survey on July 30, 2009 do hereby state that under requirements of PA 74, Michigan PA of 1970, the corner points mentioned in lines 1 and 2 above were in conformance with regulations and rules therefore as required in the current manual of survey instructions of the United States Department of the Interior, Bureau of Land Management or by a decree of a Court of Law and/or that the corner points mentioned in lines 3, 4 and 5 above were in conformance with the rules of the Michigan Board of Land Surveyors or by a Decree of a Court of Law; established, re-established, monumented, recovered, found as expressed below:

NOTE: Not more than 2 corners, all in the same town and range, may be recorded on this certificate.



A. Description of original monument and accessories and/or subsequent restoration:

15 - None

16 - 1910 - C. P. Tuller - Set iron pipe 4' Long 2 1/2" thick
1) Hemlock 30" N36°W 5'; 2) Cedar 16" N34°E 5 1/2'.

B. Description of corner evidence found and/or method applied in restoring or re-establishing corner:

15 - W 1/16 Corner common to Sec. 24 & 25 - Set 2" Alum. Cap on 5/8" x 34" rebar per standard BLM procedure. Falls on N. facing side slope. Fence line to S. is 46± West.

16 - E 1/16 Corner common to Sec. 24 & 25 - Fd. rusty 2" I.D. iron pipe per C. P. Tuller that fits stp. remains of both of his witnesses, the cedar with good notch and scribe. Tuller pipe is S1°23'29"E 11.39' from calculated position for corner. Both corners at 'L9' and 'M9' are Tuller positions. A review of Tuller's notes shows that he ran East from 'L9' and at "20.87 (10.85 - GLO) - 24" Cedar line tree." This line tree noted by Tuller is now gone. It appears that Tuller may have placed the 2" pipe midway between 'L9' to 'M9' but on a line between 'L9' and the Cedar tree he found at 20.87 chains. Since the government notes call for the line tree - 24" Cedar - to be only 10.85 Chains east of 'L9' I don't believe Tuller had a valid position for the E 1/16 corner (#16). Thus set 2" Alum. Cap on 5/8" x 34" rebar per standard BLM procedure.



C. Description of monument for corner and accessories established to perpetuate locating the position of the corner:

15 - Stamped 2" Alum. Cap on 5/8" x 34" iron rebar.
N60°E 9.28' to set N & T in SE side 4" Hemlock
S6°E 3.24' to set N & T in W. side 5" Hemlock
S76°W 19.01' to set N & T in N. side 15" Maple
N20°W 15.34' to set N & T in W. side 7" Y. Birch
Set Blue Carsonite Post with loc. tag 1' NW

16 - Stamped 2" Alum. Cap on 5/8" x 34" iron rebar
Set Blue Carsonite Post with loc. tag 1' NW
N25°E 12.96' to set N & T in NW side 10" Cedar
S87°E 19.80' to set N & T in N. side 14" S. Maple
S50°E 27.17' to set N & T in NW side 15" S. Maple
N52°W 14.76' to set N & T in E. side 8" Hemlock
Set Steel Fence post 1' SE
S1°23'29"E 11.39' to 2" iron pipe per Tuller.

Signed by: Craig W. McVean
Surveyor's Michigan License No.: 39088

Date: 1/7/2010