

MICHIGAN
DEPARTMENT OF CONSERVATION
FORESTRY DIVISION

LAND CORNER RECORD

T. 26 N.R. 15 W

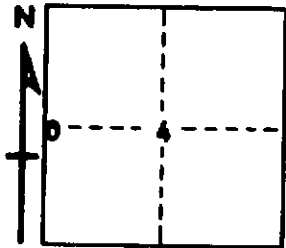
Benzie COUNTY

DESCRIPTION OF CORNER 1/4 corner common to sections 4 & 5

CORNER MONUMENT Found Axle Shaft

DATE MONUMENT PLACED AND WITNESSED June 1968

WITNESSES TO CORNER..... 16" Hemlock N 15 E 7.3'



16" Hemlock S 72 W 17.5'

12" Hemlock N 55 W 28.4'

AND

CIRCLE CORNER REGISTERED Random N. Due E. 1.00'

DESCRIPTION IN DETAIL AS TO HOW CORNER WAS LOCATED AND IDENTIFIED OR RESTORED.

This corner was found at an old corner fence post (down) with fence remains running N-S-E-W.

It fits F. Haswell's survey of Section 4, T26N, R15W in 1914, which is on record at the County Courthouse.

SURVEYOR'S SEAL

SIGNED Carl F. Boer DATE 7/8/68
REGISTERED LAND SURVEYOR 12028