

MICHIGAN
DEPARTMENT OF CONSERVATION
FORESTRY DIVISION

LAND CORNER RECORD

T. 26 N.R. 15 W

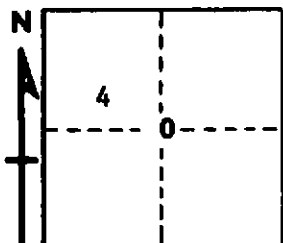
BENZIE COUNTY

DESCRIPTION OF CORNER Center 1/4 Corner Section 4

CORNER MONUMENT Found Benzie County Std. Mon. (4" Alum Cap on 1" pipe)

DATE MONUMENT PLACED AND WITNESSED June 1968

WITNESSES TO CORNER..... 18" Trp. Map. N 45 W 6.3'



5" Hem. S 50 E 54.1'

5" Hem. N 85 E 53.0'

AND

CIRCLE CORNER REGISTERED

DESCRIPTION IN DETAIL AS TO HOW CORNER WAS LOCATED AND IDENTIFIED OR RESTORED.

This corner was set by F. Haswell in 1914 at the intersection of the N-S 1/4 line and the E-W 1/4 line. His survey is on record at the County Courthouse.

SURVEYOR'S SEAL

SIGNED Carl F. Rosen DATE 7/9/68
REGISTERED LAND SURVEYOR
~~#10068~~
12028