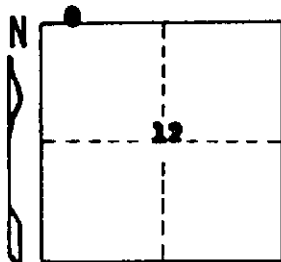


STATE OF MICHIGAN  
DEPARTMENT  
OF  
NATURAL RESOURCES

## LAND CORNER RECORD

BENZIE COUNTY  
T 27 N R 15 W

DESCRIPTION OF CORNER USMC corner to Sections 12 & 1  
CORNER MONUMENT Set Std. Dept. Mon  
DATE MONUMENT PLACED AND WITNESSED 12-7-70  
WITNESSES TO CORNER.....



<u>20" W. Pine</u>	<u>S 39 E</u>	<u>62.2'</u>
<u>20" W. Pine</u>	<u>S 65 W</u>	<u>91.2'</u>

AND

CIRCLE CORNER REGISTERED

DESCRIPTION IN DETAIL AS TO HOW CORNER WAS LOCATED AND IDENTIFIED OR RESTORED.

This corner was set while making a boundary survey in this area. U.S. notes dated 1850 give the following "Meanders of Lake Mich.---to N.C. on line bet. Secs. 1 & 12; thence in Sec. 12, S10W 33.75 Chains; at 1.50 Ch. Stream, 30 L., to N.C. on line bet. Secs 11 & 12, Beach 3 Ch. wide and bare sand 3 or 4 Ch. back of N.C.". Our retracement of the U.S. Meander line crosses the approximate center of Otter Creek at 65'± (1.29 Ch.). There is the possible remains of US-BT (W.Pine 18 E77E 2.02).. large W. Pine stump remains on side hill at about 2 Ch.

Our position for the US-N.C. was established by projecting the North line of the NE 1/4 of Sec. 12 Westerly (straight line projection by computation) for a U.S. distance of 30.20 chains (1993.2').

SURVEYOR'S SEAL

SIGNED

*Carl F. Rosen*  
REGISTERED LAND SURVEYOR 12078

DATE

12-14-70

DISTRIBUTION:

County Courthouse  
Area Forester (Regions I & II)  
District or Region Surveyor  
Forestry Div., Lansing

R 4047  
Rev. 10/68